



**UNI**

University of  
Northern Iowa®

# FACT BOOK 2024-25

## Institutional Effectiveness & Planning

The University of Northern Iowa creates, empowers, and innovates to enrich Iowa and beyond.

## Quick Reference

<b>University President</b>	Mark A. Nook	<b>Residence Hall Occupancy</b>	3,153
<b>Board of Regents President</b>	Sherry Bates	<b>Number of Financial Aid Awards</b>	32,366
<b>University Accreditation</b>	Higher Learning Commission (HLC)	<b>Fall 2024 Employees</b>	
		Faculty and Institutional Officers	467
		Professional and Scientific	643
		General Service Staff	451
<b>Number of Colleges</b>	5	Total	1,561
<b>Number of Academic Departments</b>	32		
<b>Enrollment 2024 (Fall Headcount)</b>		<b>2024 Current Funds Revenues</b>	\$462,706,295
Undergraduate	7,716	<b>2023 - 2024 Sponsored Funding Awarded</b>	\$35,088,062
Graduate	1,567		
Total	9,283	<b>Academic Year 2024 - 2025 Tuition and Fees</b>	
<b>Enrollment 2024 (Fall FTE)</b>		Undergraduate Resident	\$8,564
Undergraduate	7,040	Graduate Resident	\$10,230
Graduate	998	Undergraduate Nonresident	\$20,340
Total	8,038	Graduate Nonresident	\$21,932
<b>2023 - 2024 Degrees Awarded</b>		<b>Academic Year 2024 - 2025 Room and Board</b>	\$9,986
Baccalaureate (Bachelor's)	1,909	<b>Electronic Journals Available in Library</b>	106,170
Master's	345		
Specialist	11	Location	Cedar Falls, IA
Doctorate	6	Homepage Address	<a href="http://www.uni.edu">http://www.uni.edu</a>
Total	2,271	Office of Enrollment Services Phone Number	800-772-2037
<b>Total Living Alumni</b>	127,656		
<b>Student Financial Aid</b>	\$99,175,720	For an electronic version of the fact book, visit our web site at:	<a href="https://ie.uni.edu/uni-facts">https://ie.uni.edu/uni-facts</a>



# FACT BOOK 2024-25

University of Northern Iowa  
Institutional Effectiveness & Planning  
Cedar Falls, IA 50614-0005  
[oire@uni.edu](mailto:oire@uni.edu)

Student Contributor: Noman Ikram

Graphic and Publication Support: Office of University Relations

Data Contributor: Institutional Effectiveness & Planning (unless otherwise noted)

# TABLE OF CONTENTS

Quick Reference . . . . .	Inside front cover
Mission Statement and Institutional Goals . . . . .	.1
UNI Organizational Chart . . . . .	2
UNI Administration . . . . .	3
Definitions of Terms Used . . . . .	4
Calendar . . . . .	6

## New Students

Fall New Students . . . . .	9
New Student Applications, Admissions and Enrolled . . . . .	10
New Students Enrolled by Residence . . . . .	12
New Freshmen Enrollment by Residence . . . . .	13
New Undergraduate Transfer Students by Type of Transfer College . . . . .	14
New Freshmen ACT Composite Scores and High School Class Rank . . . . .	15

## Enrollment

Fall Students Profile by College . . . . .	19
Headcount Enrollment . . . . .	20
Headcount Enrollment by Level . . . . .	21
Undergraduate Enrollment by Age . . . . .	22
Undergraduate Headcount by College . . . . .	23
Undergraduate Transfer Headcount by College . . . . .	24
Fall Enrollment by Residence . . . . .	25
Enrollment by Residence . . . . .	26
Fall Enrollment by Race/Ethnicity . . . . .	27
Enrollment by Student Race/Ethnicity . . . . .	28
Fall On-Campus Headcount and FTE Enrollment by Level . . . . .	29
First Major Only by College and Level Fall . . . . .	30
Annual Degrees Awarded by Level . . . . .	31
Degrees Granted by College . . . . .	32
Degrees Granted by Race/Ethnicity . . . . .	33
Undergraduate Retention and Graduation Rates . . . . .	34
Fall Semester Residence Hall Occupancy by Gender and Level . . . . .	35
Continuing Education Credit Enrollment Trends . . . . .	36

## Alumni

Total Living Alumni by College . . . . .	41
Alumni by State . . . . .	42
Alumni by Iowa County . . . . .	43
Post-Graduation Status of Bachelors Degree Recipients . . . . .	44
Post-Graduation Status of Graduate Degree Recipients . . . . .	45
Undergraduate Plans for Further Education . . . . .	46
Graduate Plans for Further Education . . . . .	47

## Faculty and Staff

Fall Faculty Profile by College . . . . .	51
Fall Faculty by College, Legal Sex, and Tenure Status . . . . .	52
UNI Workforce by Employment Categories . . . . .	54
UNI Workforce Headcount and FTE by Employment Categories . . . . .	55
UNI Workforce by Race/Ethnicity . . . . .	56
UNI Workforce by Employment Categories and Race/Ethnicity . . . . .	57
UNI Workforce Headcount/FTE by Employment Categories and College . . . . .	58
UNI Workforce by Employment Categories, Legal Sex, and College . . . . .	59
UNI Workforce by Employment Categories, Level and College . . . . .	60
UNI Workforce by Employment Categories, Level and Legal Sex . . . . .	61
UNI Temporary Workforce Headcount/FTE by Employment Categories . . . . .	62

## Budget and Finance

Statement of Revenues, Expenses and Changes In Net Assets . . . . .	65
Financial Aid Programs by Source of Aid . . . . .	67
Student Financial Aid Programs . . . . .	68
Full-Time Undergraduate Student Tuition and Fees . . . . .	69
Full-Time Graduate Student Tuition and Fees . . . . .	70
Sponsored Project Proposals and Awards . . . . .	71

## General Information

Library Statistics . . . . .	75
International Students by Country . . . . .	77
International Students by College . . . . .	78
Top 5 Countries of Origin for International Students . . . . .	79
Study Abroad Students by College and Term . . . . .	80
Study Abroad Students & Incoming International Exchange Students by Country . . . . .	81
UNI Services to Businesses, Communities and Local Government . . . . .	82
UNI Carnegie Classification . . . . .	83
Iowa Economic Impact Profile . . . . .	84

## Peer Institutions

Undergraduate Enrollment and Costs . . . . .	87
Faculty by Rank . . . . .	88
Faculty Average Salaries by Rank . . . . .	89
Undergraduates Receiving Student Financial Aid . . . . .	90
Retention and Graduation Rates . . . . .	91
Degrees Granted in Academic Year . . . . .	92
Campus Map . . . . .	Inside back cover

## Institutional Mission

## Institutional Goals

### INSTITUTIONAL MISSION

The University of Northern Iowa creates, empowers, and innovates to enrich Iowa and beyond.

### VISION STATEMENT

We serve the public good through excellence in teaching and learning, scholarship, and service.

### VALUES

As a university community we are guided by the following core values:

**Academic Freedom** – The freedom of inquiry and expression in teaching and learning, scholarship, and service.

**Access** – A welcoming, supportive, and affordable educational environment for all.

**Integrity** – A commitment to accountability, responsibility, and the highest ethical standards are integrated into all university practices.

**Collaboration** – A commitment to work together to achieve our shared vision, mission, and goals, and to develop and improve institutional policies, programs, and processes.

**Community** – A caring and safe community characterized by appreciation, respect, and a sense of belonging for all.

**Empowerment** – Active engagement in transformative, innovative and lifelong learning in service to the public good.

**Excellence** – A commitment to pursuing the highest levels of achievement in teaching and learning, scholarship and service.

**Sustainability** – A resilient community and campus that balances innovation and stewardship, is economically sound, and environmentally responsible.

### Goal 1:

#### Innovate for Learner Success

Enhance access and support services for all learners through an innovative and relevant academic curriculum and out-of-class experiences.

### Goal 2:

#### Access for All

Create a living, learning, and working environment with access for all.

### Goal 3:

#### Empower Communities to Shape Their Future

Empower and engage learners and communities to confront challenges and seize opportunities that advance the public good

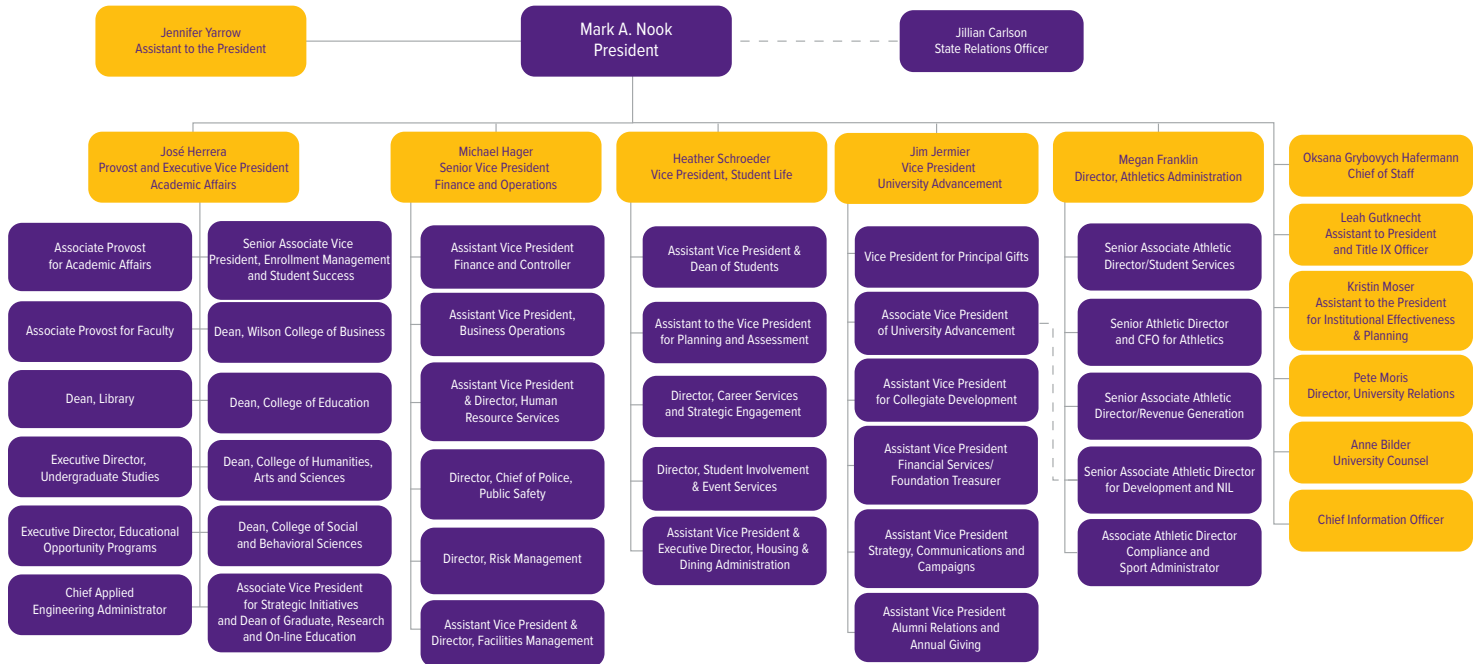
### Goal 4:

#### Steward Resources Effectively

Align and effectively utilize University resources to improve access, affordability, and quality.

# Administrative Organization 2024-25

Updated March 2025



## UNI Administration

<b>PRESIDENT</b> .....	Mark A. Nook
<b>EXECUTIVE VICE PRESIDENT and PROVOST</b> .....	Jose Herrera
<b>SENIOR VICE PRESIDENT for FINANCE and OPERATIONS</b> .....	Michael Hager
<b>VICE PRESIDENTS</b>	
Vice President for Student Life.....	Heather Schroeder
Vice President for University Advancement and President of the UNI Foundation.....	Jim Jermier
<b>CHIEF OF STAFF</b> .....	Oksana Grybovykh Hafermann
<b>ASSISTANT TO PRESIDENT and TITLE IX OFFICER</b> .....	Leah Gutknecht
<b>ASSISTANT TO PRESIDENT, INSTITUTIONAL EFFECTIVENESS and PLANNING</b> .....	Kristin Moser
<b>DIRECTOR OF ATHLETIC ADMINISTRATION</b> .....	Megan Franklin
<b>DIRECTOR OF UNIVERSITY RELATIONS</b> .....	Pete Moris
<b>SENIOR ASSOCIATE VICE PRESIDENT for ENROLLMENT MANAGEMENT</b> .....	Kristin Woods
<b>ASSOCIATE VICE PRESIDENT for STRATEGIC INITIATIVES</b> .....	Stephanie Huffman
<b>ASSOCIATE PROVOSTS</b>	
Associate Provost for Academic Affairs (interim).....	Deirdre Heistad
Associate Provost for Faculty Affairs.....	Amy Nielsen
<b>DEANS</b>	
Wilson College of Business .....	Leslie Wilson
College of Education.....	Colleen Mulholland
College of Humanities, Arts and Sciences (interim).....	Jennifer Cooley
College of Social and Behavioral Sciences.....	Brenda Bass
College of Graduate Research and Online Education .....	Stephanie Huffman
Library.....	Theresa Westbrook

## Definitions of Terms Used

### ENROLLMENTS

**Headcount:** The count of each student enrolled for one or more courses taken in a semester following the second week of the semester's start.

**Full-Time Student:** An undergraduate student enrolled for 12 or more credit hours per semester and a graduate student enrolled for 9 or more credit hours per semester.

**FTE (Full-Time Equivalent):** An enrollment unit used to represent a student enrolled for a full course of study. It is calculated by dividing total credit hours generated by 15.0 for undergraduate students and by 9 for graduate students for a semester FTE.

**Unclassified/Undeclared Student:** A student who has enrolled in instructional courses but has not been officially accepted into one of the institution's authorized degree programs.

**Freshman:** A first-year undergraduate student.

**First-Time First-Year Student:** A student attending any institution for the first-time at the undergraduate level. Includes students enrolled in the Fall term who attended college for the first time in the prior Summer term. Also includes students who entered with advanced standing (college credits earned before graduation from high school).

**First-Time Student:** A student attending any institution for the first time at the level enrolled. Includes students enrolled in the Fall term who attended a postsecondary institution for the first time at the same level in the prior Summer term. Also includes students who entered with advanced standing (college credit earned before graduation from high school).

**Graduation Rate:** Rate required for disclosure and/or reporting purposes under Student Right-to-Know. Calculated as the total number of completers within 150 percent of normal time divided by the revised cohort minus any allowable exclusions.

### FACULTY AND STAFF

**Faculty (Instruction/Research/Public Service):** Persons whose specific assignments customarily are made for the purpose of conducting instruction, research, or public service as a principle activity (or activities), and who hold academic rank titles of professor, associate professor, assistant professor, instructor, lecturer or the equivalent of any of these academic ranks. This category excludes president, vice presidents, and deans. Also excluded are faculty on leave without pay.

**Executive, Administrative and Managerial:** Persons whose assignments require primary (and major) responsibility for management of the institution, or a customarily recognized department or subdivision, thereof. Assignments require the performance of work directly related to management policies or general business operations of the institution, department or subdivision. It is assumed that assignments in this category customarily and regularly require the incumbent to exercise discretion and independent judgment and to direct the work of others. Included in this category are all officers holding titles such as president, vice president, dean, director or the equivalent, as well as officers subordinated to any of these administrators with such titles as associate dean, assistant dean, executive officer of academic departments (department heads or the equivalent) if their principal activity is administrative.

Continued on next page



## Definitions of Terms Used

**Continued:**

### **BUDGET AND FINANCE**

**Current Funds Expenditures (and Transfers):** The costs incurred for goods and services used in the conduct of the institution's operations. Includes the acquisition cost of capital assets, such as equipment and library books, to the extent current funds are budgeted for and used by operating departments for such purposes.

**Current Funds Revenues:** Unrestricted gifts, grants and other resources earned during the reporting period and restricted resources to the extent that such funds were expended for current operating purposes. Excludes restricted current funds received, but not expended, because these revenues have not been earned.

### **Academic Support (Expenditures) for Public Institutions:**

Expenditures for the support services that are an integral part of the public institution's primary mission of instruction, research or public service. Includes expenditures for libraries, museums, galleries, audiovisual services, academic computing support, ancillary support, academic administration, personnel development and course and curriculum development. Academic support expenditures for public institutions are measured differently than academic support expenses for private institutions because private institutions' academic support expenses include depreciation costs and interest costs in amounts associated with this function. In addition, private institutions exclude amounts of capital expenditures associated with the academic support function. Finally, operations and maintenance expenses associated with the academic support function are included in the amounts reported by private institutions but are reported separately by public institutions.

### **Auxiliary Enterprises (Expenditures) for Public Institutions:**

Expenditures for essentially self-supporting operations of the institution that exist to furnish a service to students, faculty or staff, and that charge a fee that is directly related to, although not necessarily equal to, the cost of the service. Includes mandatory and nonmandatory transfers. Examples are residence halls, food services, student health services, athletics, UNI-Dome and performing arts center. Auxiliary enterprise expenditures are measured differently for public and private institutions. Public institutions include capital expenditure amounts associated with auxiliary enterprise expenditures, but do not include depreciation, interest and operations and maintenance expenses. These amounts are included in private institutions' expenses of auxiliary enterprises.

### **OTHER**

**IPEDS:** The Integrated Postsecondary Education Data System conducted by National Center for Education Statistics (NCES). IPEDS began in 1986 and involves annual data collections. Survey data are required from all postsecondary institutions that have a Program Participation Agreement (PPA) with the Office of Postsecondary Education, U.S. Department of Education. IPEDS also requests limited data from approximately 3,000 other schools offering postsecondary education programs.

**HLC:** The Higher Learning Commission (HLC) is an independent corporation that was founded in 1895 as one of seven regional institutional accreditations in the United States.

## CALENDAR

### Semester/Date

#### Fall 2024

Monday, August 26  
Monday, September 2  
Friday, October 18  
Monday, October 21  
Monday - Friday, November 25 - 29  
Thursday - Friday, November 28 - 29  
Monday - Friday, December 16 - 20  
Saturday, December 21  
Tuesday- Wednesday, December 25 - 26

#### Spring 2025

Wednesday, January 1  
Monday, January 20  
Tuesday, January 21  
Friday, March 14  
Monday, March 24  
Monday - Friday, March 17 - 21  
Monday - Friday, May 12 - 16  
Friday - Saturday, May 16 - 17

#### Summer 2025

Monday, May 19  
Monday, May 19  
Monday, May 26  
Friday, June 13  
Monday, June 16  
Monday, June 16  
Friday, June 27  
Monday, June 30  
Friday, July 4  
Friday, July 11  
Monday, July 14  
Friday, August 8

### Event

Semester begins  
University holiday  
First half ends  
Second half begins  
Fall break  
University holiday  
Final exam week  
Commencement  
University holiday

University holiday  
University holiday  
Semester begins  
First half ends  
Second half begins  
Spring break  
Final exam week  
Commencement

First 4 week session begins  
First 6 week session begins  
University holiday  
First 4 week session ends  
Second 4 week session begins  
8 week session begins  
First 6 week session ends  
Second 6 week session begins  
University holiday  
Second 4 week session ends  
Third 4 week session begins  
All sessions end

### Semester/Date

#### Fall 2025

Monday, August 25  
Monday, September 1  
Friday, October 17  
Monday, October 20  
Monday - Friday, November 24 - 28  
Thursday - Friday, November 27 - 28  
Monday - Friday, December 15 - 19  
Saturday, December 20  
Thursday - Friday, December 25 - 26

#### Spring 2026

Thursday, January 1  
Monday, January 19  
Tuesday, January 20  
Friday, March 13  
Monday, March 23  
Monday - Friday, March 16 - 20  
Monday - Friday, May 11 - 15  
Friday - Saturday, May 15 - 16

#### Summer 2026

Monday, May 18  
Monday, May 18  
Monday, May 25  
Friday, June 12  
Monday, June 15  
Monday, June 15  
Friday, June 26  
Monday, June 29  
Friday, July 3  
Friday, July 10  
Monday, July 13  
Friday, August 7



NEW STUDENTS



NEW STUDENTS

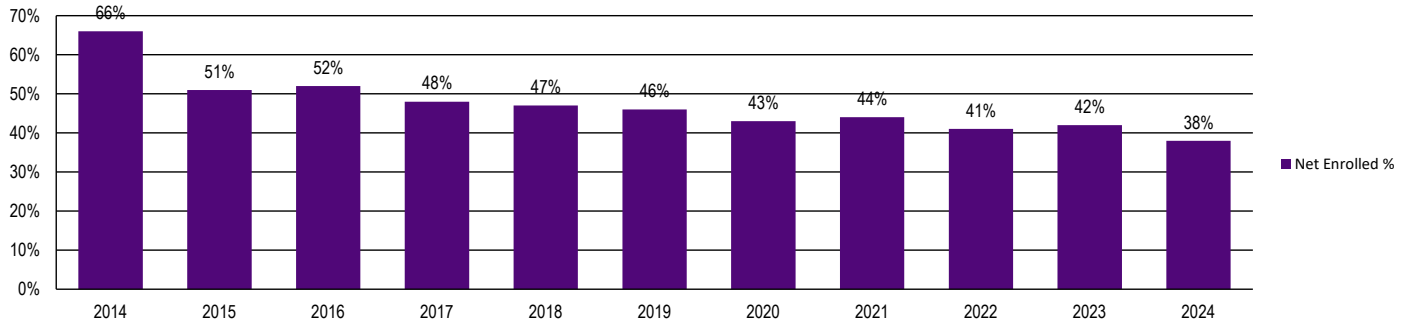
## Fall 2024 New Students Profile by College

	Total University	Wilson College of Business	College of Education	Humanities, Arts & Sciences	Social & Behavioral Sciences	No Specific College
<b>TOTAL</b>	<b>3,135</b>	<b>518</b>	<b>494</b>	<b>789</b>	<b>716</b>	<b>618</b>
Percent	100%	17%	16%	25%	23%	20%
<b>New Undergraduate</b>	2,499	475	336	685	616	387
New Freshmen	1,546	290	193	474	409	180
Transfers	778	181	133	206	203	55
Other	175	4	10	5	4	152
Full-Time	2,205	441	285	660	593	226
Part-Time	294	34	51	25	23	161
Female	1,556	206	313	334	425	278
Male	943	269	23	351	191	109
<b>New Graduate</b>	636	43	158	104	100	231
Full-Time	201	30	24	63	75	9
Part-Time	435	13	134	41	25	222
Female	459	17	117	75	75	175
Male	177	26	41	29	25	56

## Fall 2024 New Students

	Applications		Admissions		Net Enrolled*		NET ENROLLED					
	N	%	N	%	N	%	Resident N	%	Non-Resident N	%	International N	%
<b>TOTAL</b>	<b>8,365</b>		<b>7,001</b>		<b>2,960</b>		<b>2,639</b>		<b>251</b>		<b>70</b>	
Percent				83.7		35.4		89.2		8.5		2.4
<b>Undergraduate</b>												
New Freshmen	5,610	79.4	4,888	80.1	1,546	66.5	1,377	65.9	153	75.7	16	51.6
Transfers	1,453	20.6	1,211	19.9	778	33.5	714	34.1	49	24.3	15	48.4
Total	<b>7,063</b>		<b>6,099</b>		<b>2,324</b>		<b>2,091</b>		<b>202</b>		<b>31</b>	
Percent				86.4		38.1		90.0		8.7		1.3
<b>Graduate</b>												
Students	<b>1,302</b>		<b>902</b>		<b>636</b>		<b>548</b>		<b>49</b>		<b>39</b>	
Percent				69.3		70.5		86.2		7.7		6.1

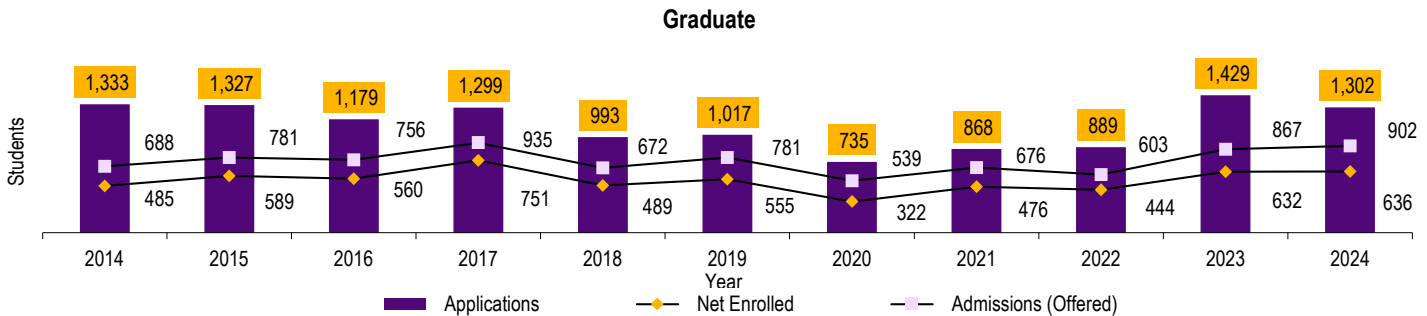
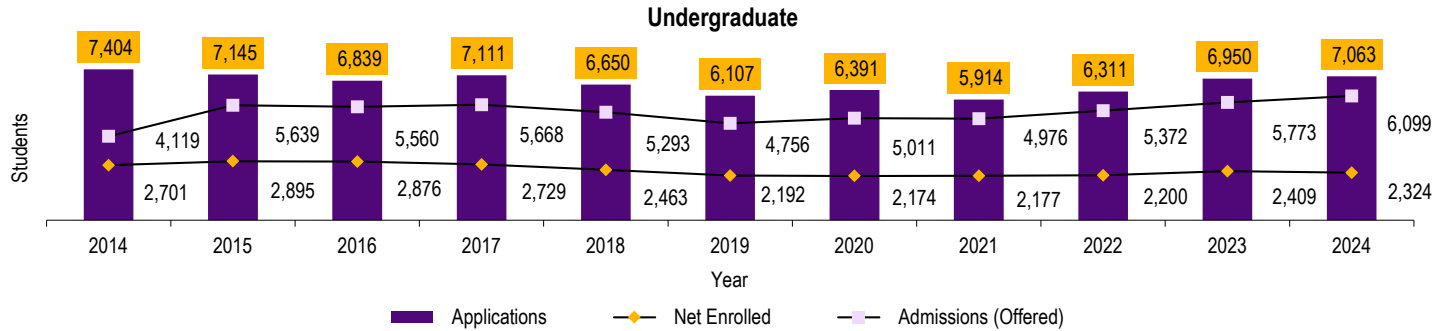
Undergraduate - Net Enrolled % of Admitted



The undergraduate data does not reflect unclassified new students.

\*Enrolled as % of applied

## New Student Applications, Admissions and Enrolled Fall Semester 2014 - 2024

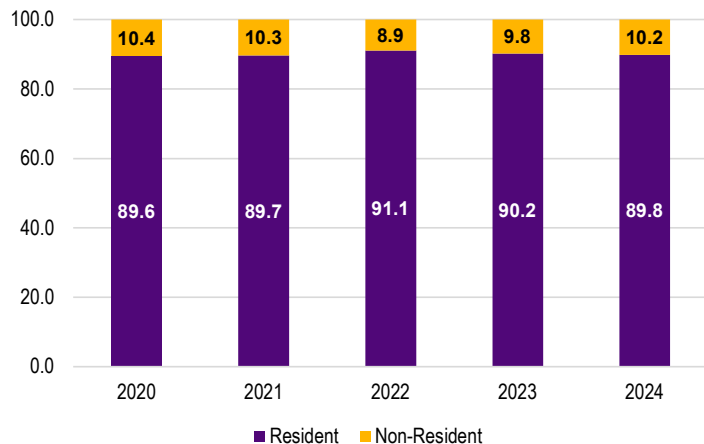




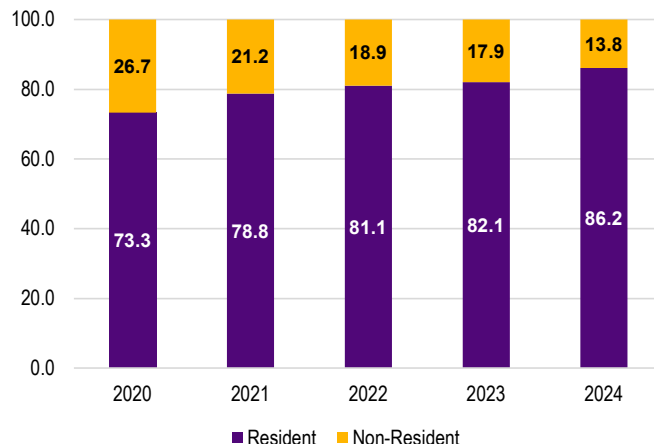
## New Students Enrolled by Residence 2014 - 2024

	UNDERGRADUATE			GRADUATE			Total	Annual Percent Change
	Resident	Non-Resident	International Student	Resident	Non-Resident	International Student		
2014	2,530	184	149	376	81	28	3,348	-3.4
2015	2,708	210	106	472	81	36	3,613	7.9
2016	2,671	209	100	455	80	25	3,540	-2.0
2017	2,536	225	92	617	98	36	3,604	1.8
2018	2,342	175	70	396	63	30	3,076	-14.7
2019	2,109	148	63	439	86	30	2,875	-6.5
2020	1,995	193	39	236	59	27	2,549	-11.3
2021	2,085	188	51	375	74	27	2,800	9.8
2022	2,127	177	31	360	61	23	2,779	-0.8
2023	2,297	197	53	519	67	46	3,179	14.4
2024	2,245	212	42	548	49	39	3,135	-1.4

Undergraduate New Student %



Graduate New Student %

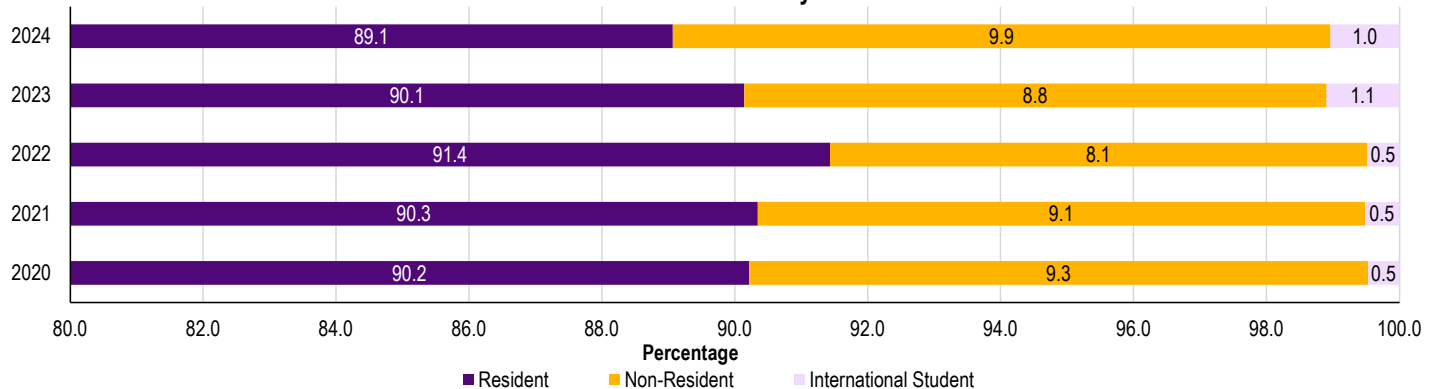




## New Freshmen Enrollment by Residence 2020 - 2024

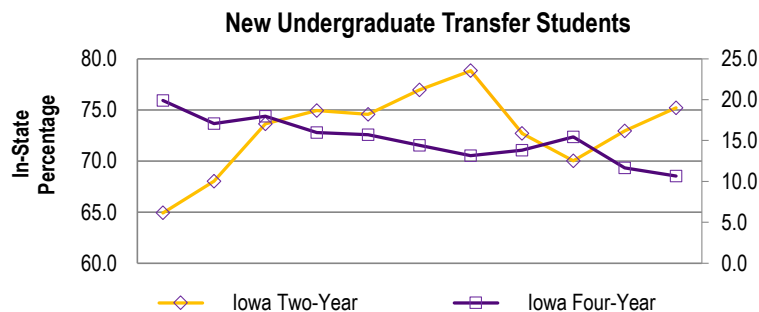
	2020		2021		2022		2023		2024	
	N	%	N	%	N	%	N	%	N	%
<b>New Freshmen</b>	<b>1482</b>		<b>1554</b>		<b>1436</b>		<b>1552</b>		<b>1546</b>	
Annual Percent Change		1.2		4.9		-7.6		8.1		-0.4
Resident	1337	90.2	1404	90.3	1313	91.4	1399	90.1	1377	89.1
Non-Resident	138	9.3	142	9.1	116	8.1	136	8.8	153	9.9
International Student	7	0.5	8	0.5	7	0.5	17	1.1	16	1.0

New Freshmen Enrollment by Residence



## New Undergraduate Transfer Students by Transfer Type

	2014	2015	2016	2017	2018	2019	2020	2021	2022	2023	2024
<b>TOTAL</b>	<b>904</b>	<b>979</b>	<b>834</b>	<b>858</b>	<b>763</b>	<b>694</b>	<b>638</b>	<b>623</b>	<b>764</b>	<b>857</b>	<b>778</b>
Annual Percent Change	-0.9	8.3	-14.8	2.9	-11.1	-9.0	-8.1	-10.2	22.6	12.2	-9.2
Iowa Two-Year Public and Private	<b>587</b>	<b>666</b>	<b>614</b>	<b>643</b>	<b>569</b>	<b>534</b>	<b>503</b>	<b>453</b>	<b>535</b>	<b>625</b>	<b>585</b>
Iowa Area Community Colleges	587	665	614	643	569	534	503	453	535	625	585
Iowa Two-Year Private	0	1	0	0	0	0	0	0	0	0	0
Iowa Four-Year Public and Private	<b>180</b>	<b>167</b>	<b>150</b>	<b>137</b>	<b>120</b>	<b>100</b>	<b>84</b>	<b>86</b>	<b>118</b>	<b>100</b>	<b>83</b>
Iowa Four-Year Public											
Iowa State University	32	30	23	22	18	24	15	23	19	15	13
University of Iowa	32	22	14	28	24	20	13	17	28	22	20
University of Northern Iowa*	32	29	31	23	28	14	4	1	4	7	3
Subtotal	96	81	68	73	70	58	32	41	51	44	36
Iowa Four-Year Private	84	86	82	64	50	42	52	45	64	55	47
Iowa Other									3	1	0
Non-Iowa (US) Total	<b>137</b>	<b>146</b>	<b>70</b>	<b>78</b>	<b>74</b>	<b>60</b>	<b>51</b>	<b>84</b>	<b>111</b>	<b>132</b>	<b>110</b>
Two-Year Out of State	34	47	22	32	30	25	18	20	19	28	32
Four-Year Out of State	103	99	48	46	44	35	33	34	51	49	38
Non-Iowa Other								30	41	55	40



\*Students transferring from UNI are returning UNI students pursuing a second BA or teacher license

## New Freshmen ACT Composite Scores and High School Class Rank

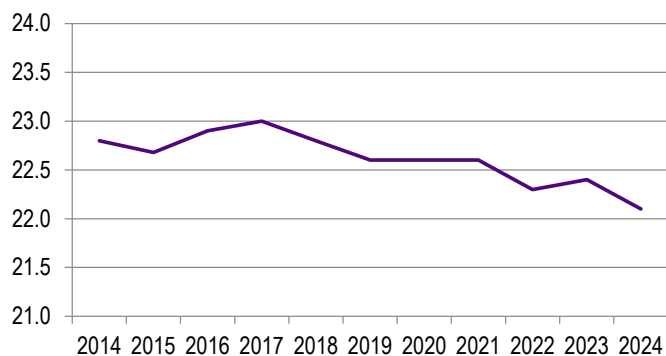
**ACT Composite Scores**

	Mean	75 <sup>th</sup> Percentile	25 <sup>th</sup> Percentile
2014	22.8	25.0	20.0
2015	22.7	25.0	20.0
2016	22.9	25.0	20.0
2017	23.0	26.0	20.0
2018	22.8	25.0	20.0
2019	22.6	25.0	20.0
2020	22.6	25.0	19.0
2021	22.6	26.0	19.0
2022	22.3	25.0	19.0
2023	22.4	25.0	19.0
2024	22.1	25.0	19.0

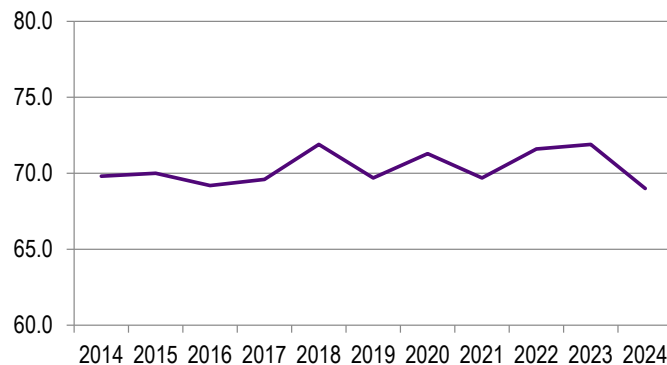
**High School Rank**

	Mean	Upper 10%	Upper 20%	Upper 50%
2014	69.8	17.0	35.9	83.1
2015	70.0	18.0	39.3	83.7
2016	69.2	17.3	36.9	81.4
2017	69.6	16.9	37.0	82.4
2018	71.9	20.4	40.6	86.0
2019	69.7	20.4	36.1	83.8
2020	71.3	21.4	41.1	84.2
2021	69.7	19.6	40.2	80.9
2022	71.6	21.7	42.2	84.7
2023	71.9	24.0	42.5	83.6
2024	69.0	18.3	38.7	80.7

**ACT Mean Composite Score**



**High School Mean Rank**



*Intentionally blank*



CURRIS BUSINESS BUILDING

# ENROLLMENT



ENROLLMENT

## Fall 2024 Students Profile by College

	Total University	Wilson College of Business	College of Education	Humanities, Arts & Sciences	Social & Behavioral Sciences	No Specific College
<b>TOTAL</b>	<b>9,283</b>	<b>1,634</b>	<b>1,597</b>	<b>2,653</b>	<b>2,196</b>	<b>1,203</b>
Percent	100	18	17	29	24	13
Full-Time	7,382	1,467	1,080	2,393	2,000	442
Part-Time	1,901	167	517	260	196	761
Female	5,909	663	1,384	1,530	1,459	873
Male	3,374	971	213	1,123	737	330
Freshman	1,474	265	162	482	388	177
Sophomore	1,524	291	192	494	432	115
Junior	2,036	454	286	644	552	100
Senior	2,397	506	502	718	546	125
Unclassified	285	12	56	13	8	196
Graduate	1,567	106	399	302	270	490
<b>International Students:</b>						
Undergraduate	101	29	0	44	11	17
Graduate	101	44	5	28	19	5
<b>1<sup>st</sup> Majors:</b>						
Undergraduate	7,716	1,528	1,198	2,351	1,926	713
Graduate	1,567	106	399	302	270	490
<b>2023-2024 Degrees Granted:</b>						
Baccalaureate (Bachelor's)	1,909	357	405	563	490	94
Master's	345	26	100	91	111	17
Specialists	11	0	11	0	0	0
Doctorates	6	0	6	0	0	0

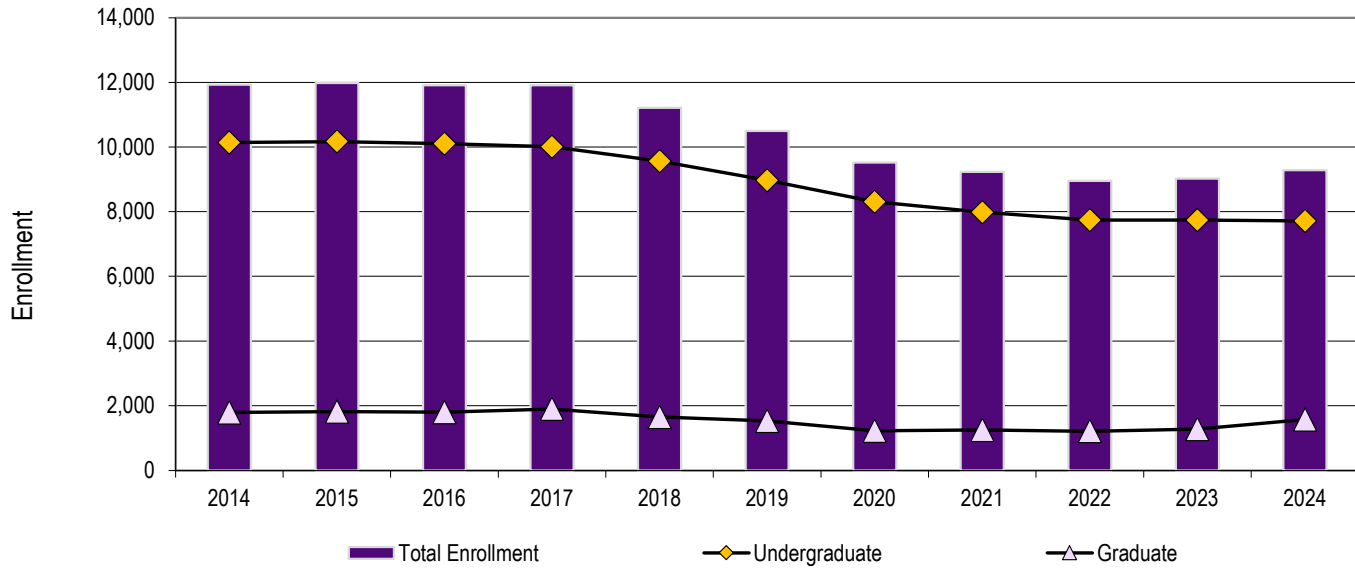


## Headcount Enrollment 2014 - 2024

	UNDERGRADUATE			GRADUATE			Total	Annual Percent Change
	Full-Time	Part-Time	Total	Full-Time	Part-Time	Total		
<b>2014</b>	9,122	1,020	10,142	597	1,189	1,786	<b>11,928</b>	-1.9
<b>2015</b>	9,127	1,042	10,169	562	1,250	1,812	<b>11,981</b>	0.4
<b>2016</b>	9,146	958	10,104	557	1,244	1,801	<b>11,905</b>	-0.6
<b>2017</b>	9,100	905	10,005	538	1,364	1,902	<b>11,907</b>	0.0
<b>2018</b>	8,745	816	9,561	519	1,132	1,651	<b>11,212</b>	-5.8
<b>2019</b>	8,228	745	8,973	454	1,070	1,524	<b>10,497</b>	-6.4
<b>2020</b>	7,632	672	8,304	432	786	1,218	<b>9,522</b>	-9.3
<b>2021</b>	7,290	691	7,981	449	801	1,250	<b>9,231</b>	-3.1
<b>2022</b>	6,976	763	7,739	399	811	1,210	<b>8,949</b>	-3.1
<b>2023</b>	6,985	757	7,742	414	865	1,279	<b>9,021</b>	0.8
<b>2024</b>	6,921	795	7,716	461	1,106	1,567	<b>9,283</b>	2.9



## Headcount Enrollment by Level 2014 - 2024



Includes full-time and part-time students

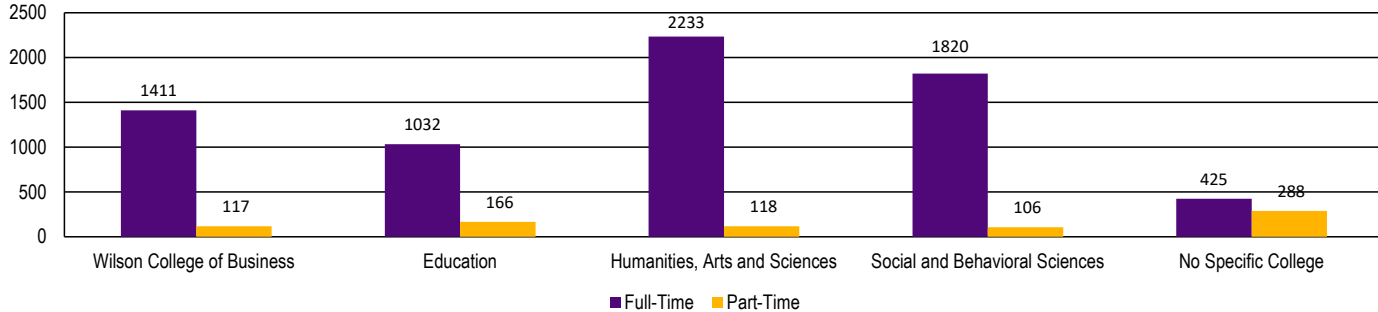
## Undergraduate Enrollment by Age 2014 - 2024

Fall Semester	2014	2015	2016	2017	2018	2019	2020	2021	2022	2023	2024
<b>Total Enrollment</b>	<b>10,142</b>	<b>10,169</b>	<b>10,104</b>	<b>10,005</b>	<b>9,561</b>	<b>8,973</b>	<b>8,304</b>	<b>7,981</b>	<b>7,739</b>	<b>7,742</b>	<b>7,716</b>
Under 18	46	29	30	40	25	20	21	23	30	31	27
18	1,068	1,119	1,154	1,050	945	820	827	909	813	864	868
19	1,677	1,779	1,913	1,833	1,694	1,545	1,439	1,410	1,481	1,454	1,477
20	1,833	1,828	1,888	1,995	1,947	1,770	1,685	1,495	1,513	1,611	1,522
21	2,023	1,955	1,862	2,009	1,990	1,965	1,780	1,676	1,504	1,522	1,596
22	1,554	1,456	1,443	1,311	1,371	1,361	1,299	1,155	1,079	962	947
23	741	706	651	654	581	583	519	538	428	417	399
24	300	326	249	284	254	204	168	184	213	159	171
25	170	198	188	126	146	139	100	96	86	98	96
26	115	104	133	118	89	88	75	63	70	55	60
27	85	111	71	83	78	51	59	46	58	47	45
28	70	58	78	60	46	46	31	50	32	38	40
29	58	54	39	51	39	40	31	24	43	41	36
30-39	272	284	261	258	232	203	171	192	231	251	247
40-49	85	101	81	83	85	89	68	74	111	130	116
50-64	43	53	57	46	35	43	30	39	42	60	63
65 and older	2	8	6	4	4	6	1	7	5	2	6

## Undergraduate Headcount by College Fall 2020 - 2024

	Full-Time					Part-Time				
	2020	2021	2022	2023	2024	2020	2021	2022	2023	2024
<b>Total University</b>	<b>7,632</b>	<b>7,290</b>	<b>6,976</b>	<b>6,985</b>	<b>6,921</b>	<b>672</b>	<b>691</b>	<b>763</b>	<b>757</b>	<b>795</b>
Wilson College of Business	1,520	1,488	1,403	1,388	1,411	107	86	98	107	117
Education	1,738	1,665	1,637	1,129	1,032	83	114	147	155	166
Humanities, Arts and Sciences	2,523	2,308	2,192	2,261	2,233	184	165	146	129	118
Social and Behavioral Sciences	1,372	1,358	1,291	1,744	1,820	131	100	96	111	106
No Specific College	479	471	453	463	425	167	226	276	255	288

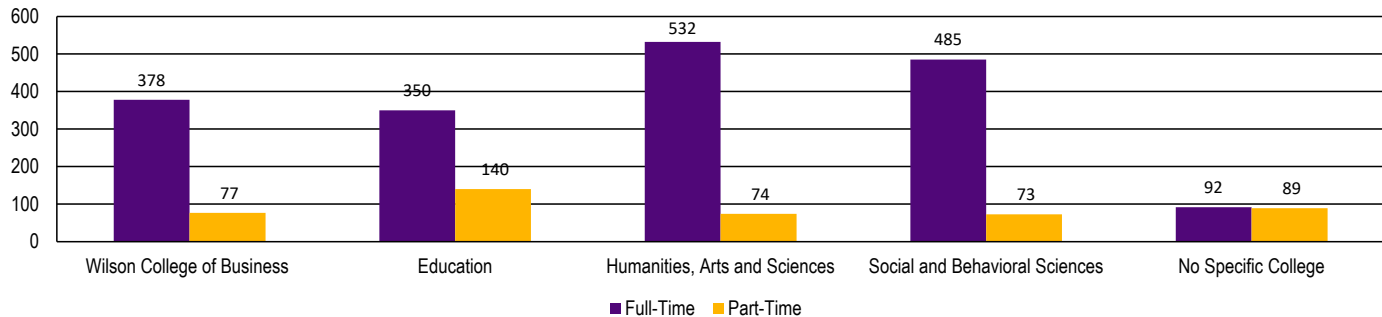
Fall 2024 Undergraduates by College



## Transfer Headcount by College Fall 2020 - 2024

	Full-Time					Part-Time				
	2020	2021	2022	2023	2024	2020	2021	2022	2023	2024
<b>Total University</b>	<b>2,059</b>	<b>1,862</b>	<b>1,919</b>	<b>1,958</b>	<b>1,837</b>	<b>323</b>	<b>328</b>	<b>370</b>	<b>443</b>	<b>453</b>
Wilson College of Business	417	386	399	364	378	55	50	44	65	77
Education	512	462	509	410	350	62	77	117	139	140
Humanities, Arts and Sciences	611	545	527	564	532	106	96	75	76	74
Social and Behavioral Sciences	442	392	401	530	485	56	57	49	69	73
No Specific College	77	77	83	90	92	44	48	85	94	89

Fall 2024 Undergraduate Transfers by College



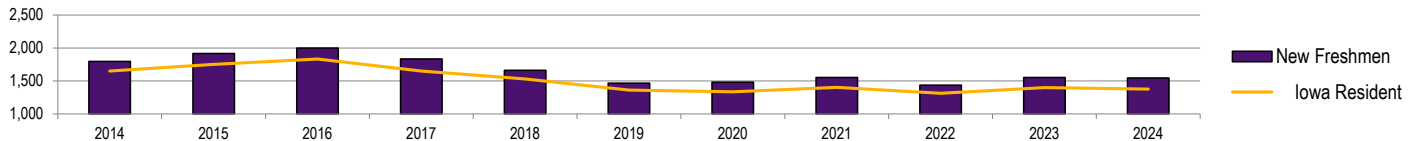
## Fall 2024 Enrollment by Residence

	U.S. Iowa Resident		U.S. Non-Iowa Resident		International Student		TOTAL N
	N	%	N	%	N	%	
<b>Enrollment</b>	<b>8,359</b>	90.0	<b>722</b>	7.8	<b>202</b>	2.2	<b>9,283</b>
New Freshmen	1,377	89.1	153	9.9	16	1.0	1,546
Undergraduate	7,017	90.9	598	7.8	101	1.3	7,716
New Graduate	548	86.2	49	7.7	39	6.1	636
Graduate	1,342	85.6	124	7.9	101	6.4	1,567

## Enrollment by Residence 2014 - 2024

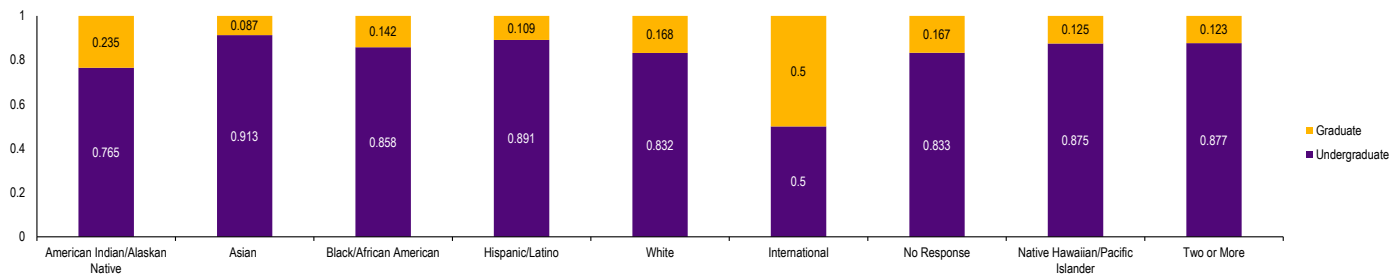
												5 Yr %	10 Yr %
Fall Semester	2014	2015	2016	2017	2018	2019	2020	2021	2022	2023	2024	Change	Change
<b>Enrollment</b>	<b>11,928</b>	<b>11,981</b>	<b>11,905</b>	<b>11,907</b>	<b>11,212</b>	<b>10,497</b>	<b>9,522</b>	<b>9,231</b>	<b>8,949</b>	<b>9,021</b>	<b>9,283</b>	-11.6	-22.2
Iowa Resident	10,491	10,549	10,528	10,545	9,976	9,394	8,455	8,281	8,115	8,118	8,359	-11.0	-20.3
U.S., Non-Iowa Resident	811	816	829	815	756	718	717	714	689	728	722	0.6	-11.0
International Student	626	616	548	547	480	385	350	236	145	175	202	-47.5	-67.7
<b>New Freshmen</b>	<b>1,797</b>	<b>1,916</b>	<b>2,000</b>	<b>1,834</b>	<b>1,661</b>	<b>1,465</b>	<b>1,482</b>	<b>1,554</b>	<b>1,436</b>	<b>1,552</b>	<b>1,546</b>	5.5	-14.0
Iowa Resident	1,651	1,751	1,833	1,651	1,530	1,360	1,337	1,404	1,313	1,399	1,377	1.3	-16.6
U.S., Non-Iowa Resident	112	131	143	158	120	96	138	142	116	136	153	59.4	36.6
International Student	34	34	24	25	11	9	7	8	7	17	16	77.8	-52.9
<b>Undergraduate</b>	<b>10,142</b>	<b>10,169</b>	<b>10,104</b>	<b>10,005</b>	<b>9,561</b>	<b>8,973</b>	<b>8,304</b>	<b>7,981</b>	<b>7,739</b>	<b>7,742</b>	<b>7,716</b>	-14.0	-23.9
Iowa Resident	9,052	9,083	9,096	9,045	8,695	8,191	7,585	7,318	7,122	7,057	7,017	-14.3	-22.5
U.S., Non-Iowa Resident	603	605	604	587	569	532	529	531	533	582	598	12.4	-0.8
International Student	487	481	404	373	297	250	190	132	84	103	101	-59.6	-79.3
<b>Graduate</b>	<b>1,786</b>	<b>1,812</b>	<b>1,801</b>	<b>1,902</b>	<b>1,651</b>	<b>1,524</b>	<b>1,218</b>	<b>1,250</b>	<b>1,210</b>	<b>1,279</b>	<b>1,567</b>	2.8	-12.3
Iowa resident	1,439	1,466	1,432	1,500	1,281	1,203	870	963	993	1,061	1,342	11.6	-6.7
U.S., Non-Iowa Resident	208	211	225	228	187	186	188	183	156	146	124	-33.3	-40.4
International Student	139	135	144	174	183	135	160	104	61	72	101	-25.2	-27.3

New Freshmen



## Fall 2024 Enrollment by Race/Ethnicity

	American Indian/ Alaskan Native		Asian		Black/African American		Hispanic/Latino		White		International		No Response		Native Hawaiian/ Pacific Islander		Two or More	
	N	%	N	%	N	%	N	%	N	%	N	%	N	%	N	%	N	%
Enrollment	17	100	149	100	309	100	534	100	7,691	100	202	100	120	100	8	100	253	100
Undergraduate	13	76.5	136	91.3	265	85.8	476	89.1	6,396	83.2	101	50.0	100	83.3	7	87.5	222	87.7
Graduate	4	23.5	13	8.7	44	14.2	58	10.9	1,295	16.8	101	50.0	20	16.7	1	12.5	31	12.3
Percentage		0%		2%		3%		6%		83%		2%		1%		0%		3%



Undergraduate 7,716  
Graduate 1,567

## Enrollment by Student Race/Ethnicity 2014-2024

	UNDERGRADUATE							GRADUATE						
	American Indian/ Alaskan Native	Asian	Black/ African American	Hispanic/ Latino	Native Hawaiian/ Pacific Islander	Two or More	Total	American Indian/ Alaskan Native	Asian	Black/ African American	Hispanic/ Latino	Native Hawaiian/ Pacific Islander	Two or More	Total
<b>2014</b>	20	90	285	339	7	195	<b>936</b>	5	18	54	38	0	15	<b>130</b>
<b>2015</b>	16	115	287	350	7	213	<b>988</b>	6	18	65	29	0	17	<b>135</b>
<b>2016</b>	28	128	273	388	9	192	<b>1,018</b>	5	13	57	39	0	23	<b>137</b>
<b>2017</b>	34	136	271	391	7	203	<b>1,042</b>	2	10	46	40	0	18	<b>116</b>
<b>2018</b>	35	136	265	371	7	207	<b>1,021</b>	1	10	45	40	0	13	<b>109</b>
<b>2019</b>	11	126	214	396	9	239	<b>995</b>	2	12	40	41	1	18	<b>114</b>
<b>2020</b>	10	123	212	403	6	228	<b>982</b>	1	13	39	39	0	24	<b>116</b>
<b>2021</b>	10	109	207	403	3	221	<b>953</b>	2	12	38	46	1	16	<b>115</b>
<b>2022</b>	9	130	224	429	3	208	<b>1,003</b>	1	16	34	43	1	24	<b>119</b>
<b>2023</b>	12	130	245	471	5	221	<b>1,084</b>	2	16	32	52	1	27	<b>130</b>
<b>2024</b>	13	136	265	476	7	222	<b>1,119</b>	4	13	44	58	1	31	<b>151</b>

Includes all international students and excludes white domestic students; other categories include American citizens, immigrants, asylees, and refugees only.



## Fall On-Campus Headcount and Full-Time Equivalent (FTE) Enrollment by Level 2014 - 2024

	Headcount									FTE Enrollment								
	Undergraduate						Graduate			Undergraduate						Graduate		
	F	S	Jr	Sr	Un-Classified	Total	Master's	Advanced	Total	F	S	Jr	Sr	Un-Classified	Total	Master's	Advanced	Total
<b>2014</b>	2,047	1,928	2,437	3,470	260	<b>10,142</b>	1,232	554	<b>1,786</b>	1,899	1,818	2,260	3,065	77	<b>9,119</b>	907	285	<b>1,192</b>
<b>2015</b>	2,174	1,933	2,492	3,335	235	<b>10,169</b>	1,237	575	<b>1,812</b>	2,010	1,814	2,312	2,937	78	<b>9,151</b>	914	280	<b>1,194</b>
<b>2016</b>	2,232	2,104	2,430	3,177	161	<b>10,104</b>	1,258	543	<b>1,801</b>	2,063	1,980	2,263	2,785	49	<b>9,140</b>	932	233	<b>1,165</b>
<b>2017</b>	1,960	2,146	2,568	3,161	170	<b>10,005</b>	1,360	542	<b>1,902</b>	1,860	2,028	2,411	2,794	43	<b>9,136</b>	885	263	<b>1,148</b>
<b>2018</b>	1,766	1,959	2,491	3,186	159	<b>9,561</b>	1,199	452	<b>1,651</b>	1,709	1,867	2,366	2,834	44	<b>8,820</b>	858	225	<b>1,083</b>
<b>2019</b>	1,495	1,800	2,319	3,182	177	<b>8,973</b>	1,117	407	<b>1,524</b>	1,452	1,734	2,204	2,851	36	<b>8,277</b>	765	208	<b>973</b>
<b>2020</b>	1,546	1,538	2,150	2,977	93	<b>8,304</b>	828	390	<b>1,218</b>	1,488	1,494	2,070	2,676	21	<b>7,749</b>	672	216	<b>888</b>
<b>2021</b>	1,554	1,490	1,907	2,867	163	<b>7,981</b>	856	394	<b>1,250</b>	1,491	1,440	1,817	2,559	39	<b>7,346</b>	678	226	<b>904</b>
<b>2022</b>	1,455	1,581	1,885	2,663	155	<b>7,739</b>	782	428	<b>1,210</b>	1,386	1,526	1,767	2,337	32	<b>7,048</b>	581	247	<b>828</b>
<b>2023</b>	1,528	1,540	2,014	2,522	138	<b>7,742</b>	878	401	<b>1,279</b>	1,473	1,479	1,896	2,215	35	<b>7,098</b>	690	224	<b>914</b>
<b>2024</b>	1,474	1,524	2,036	2,500	182	<b>7,716</b>	1,051	516	<b>1,567</b>	1,419	1,469	1,910	2,203	39	<b>7,040</b>	712	286	<b>998</b>
<b>Total Headcount:</b>							9,283			<b>Total FTE:</b>						8,038		

## First Major Only by College and Level Fall 2020 - 2024

	Undergraduate					Graduate				
	2020	2021	2022	2023	2024	2020	2021	2022	2023	2024
<b>Total University</b>	<b>8,304</b>	<b>7,981</b>	<b>7,739</b>	<b>7,742</b>	<b>7,716</b>	<b>1,218</b>	<b>1,250</b>	<b>1,210</b>	<b>1,279</b>	<b>1,567</b>
Wilson College of Business	1,627	1,574	1,501	1,495	1,528	142	91	47	75	106
Education	1,821	1,779	1,784	1,284	1,198	438	421	457	364	399
Humanities, Arts and Sciences	2,707	2,473	2,338	2,390	2,351	324	288	262	287	302
Social and Behavioral Sciences	1,503	1,458	1387	1,855	1,926	223	231	214	301	270
No Specific College	646	697	729	718	713	91	219	230	252	490

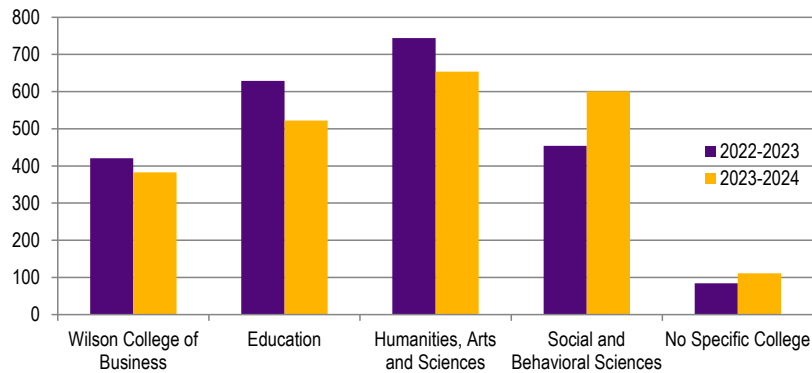
## Annual Degrees Awarded by Level 2014 - 2024

	2014- 2015	2015- 2016	2016- 2017	2017- 2018	2018- 2019	2019- 2020	2020- 2021	2021- 2022	2022- 2023	2023- 2024	5 Yr % Change	10 Yr % Change
<b>Total Degrees Awarded</b>	<b>2,768</b>	<b>2,692</b>	<b>2,579</b>	<b>2,722</b>	<b>2,739</b>	<b>2,690</b>	<b>2,675</b>	<b>2,438</b>	<b>2,332</b>	<b>2,271</b>	<b>-15.6</b>	<b>-18.0</b>
Baccalaureate	2,303	2,166	2,126	2,184	2,178	2,235	2,227	1,934	1,992	1,909	<b>-14.6</b>	<b>-17.1</b>
Master's	446	503	431	508	534	437	429	480	318	345	<b>-21.1</b>	<b>-22.6</b>
Specialists	5	9	8	7	8	7	11	15	5	11	<b>57.1</b>	<b>120.0</b>
Doctorates	14	14	14	23	19	11	8	9	17	6	<b>-45.5</b>	<b>-57.1</b>
<b>Undergraduate Degrees Awarded</b>	<b>2,303</b>	<b>2,166</b>	<b>2,126</b>	<b>2,184</b>	<b>2,178</b>	<b>2,235</b>	<b>2,227</b>	<b>1,934</b>	<b>1,992</b>	<b>1,909</b>	<b>-14.6</b>	<b>-17.1</b>
Bachelor of Applied Science						2	5	3	4	19		
Bachelor of Arts*	2,142	2,025	1,949	1,991	1,998	2,018	2,028	1,707	1,732	1,648	<b>-18.3</b>	<b>-23.1</b>
Bachelor of Fine Arts	8	7	6	7	6	11	5	3	3	4	<b>-63.6</b>	<b>-50.0</b>
Bachelor of Music	25	21	33	25	20	27	31	29	31	27	<b>0.0</b>	<b>8.0</b>
Bachelor of Science	91	76	92	96	114	131	115	104	108	94	<b>-28.2</b>	<b>3.3</b>
Bachelor of Liberal Studies	37	37	46	65	40	46	43	30	44	38	<b>-17.4</b>	<b>2.7</b>
Bachelor of Social Work								58	70	79		
<b>Graduate Degrees Awarded</b>	<b>465</b>	<b>526</b>	<b>453</b>	<b>538</b>	<b>561</b>	<b>455</b>	<b>448</b>	<b>504</b>	<b>340</b>	<b>362</b>	<b>-20.4</b>	<b>-22.2</b>
Master of Accounting	23	13	20	18	20	8	19	25	17	16	<b>100.0</b>	<b>-30.4</b>
Master of Arts in Education	112	104	80	57	91	61	67	63	49	27	<b>-55.7</b>	<b>-75.9</b>
Master of Arts	190	285	233	304	240	261	232	195	185	209	<b>-19.9</b>	<b>10.0</b>
Master of Athletic Training						1	3	7	9	8		
Master of Business Administration	38	30	18	36	107	32	55	89	11	10	<b>-68.8</b>	<b>-73.7</b>
Master of Music	13	17	17	25	13	19	6	11	7	14	<b>-26.3</b>	<b>7.7</b>
Master of Public Policy	12	0	0	10	0	9	1	16	0	11	<b>22.2</b>	<b>-8.3</b>
Master of Science	26	17	23	17	13	15	11	13	8	5	<b>-66.7</b>	<b>-80.8</b>
Master of Social Work	32	34	37	38	50	31	35	61	32	45	<b>45.2</b>	<b>40.6</b>
Professional Science Master's	0	3	3	3	0	0	0	0	0	0	<b>0.0</b>	<b>0.0</b>
Specialist in Education	5	9	8	7	8	7	11	15	5	11	<b>57.1</b>	<b>120.0</b>
Doctor of Technology/Doctor of Industrial Technology	2	0	2	1	1	2	3	1	1	0	<b>-100.0</b>	<b>-100.0</b>
Doctor of Education	12	14	12	22	18	9	5	8	16	6	<b>-33.3</b>	<b>-50.0</b>

\*Social work was previously counted in Bachelor of Arts but has since been removed and in 2021, the Bachelor of Social Work was created

## Degrees Granted by College 2022 - 2023 and 2023 - 2024

	Baccalaureates				Master's				Specialists				Doctorates			
	2022-2023		2023-2024		2022-2023		2023-2024		2022-2023		2023-2024		2022-2023		2023-2024	
	N	%	N	%	N	%	N	%	N	%	N	%	N	%	N	%
<b>Total Degrees Granted</b>	<b>1,992</b>	<b>100</b>	<b>1,909</b>	<b>100</b>	<b>318</b>	<b>100</b>	<b>345</b>	<b>100</b>	<b>5</b>	<b>100</b>	<b>11</b>	<b>100</b>	<b>17</b>	<b>100</b>	<b>6</b>	<b>100</b>
Wilson College of Business	393	19.7	357	18.7	28	8.8	26	7.5	0	0.0	0	0.0	0	0.0	0	0.0
Education	517	26.0	405	21.2	91	28.6	100	29.0	5	100.0	11	100.0	16	94.1	6	100.0
Humanities, Arts and Sciences	618	31.0	563	29.5	125	39.3	91	26.4	0	0.0	0	0.0	1	5.9	0	0.0
Social and Behavioral Sciences	380	19.1	490	25.7	74	23.3	111	32.2	0	0.0	0	0.0	0	0.0	0	0.0
No Specific College	84	4.2	94	4.9	0	0.0	17	4.9	0	0.0	0	0.0	0	0.0	0	0.0



## Degrees Granted by Race/Ethnicity 2022 - 2023 and 2023 - 2024

	Baccalaureates				Master's				Specialists				Doctorates			
	2022-2023		2023-2024		2022-2023		2023-2024		2022-2023		2023-2024		2022-2023		2023-2024	
	N	%	N	%	N	%	N	%	N	%	N	%	N	%	N	%
<b>Total Degrees Granted</b>	<b>1,992</b>	<b>100</b>	<b>1,909</b>	<b>100</b>	<b>318</b>	<b>100</b>	<b>345</b>	<b>100</b>	<b>5</b>	<b>100</b>	<b>11</b>	<b>100</b>	<b>17</b>	<b>100</b>	<b>6</b>	<b>100</b>
American Indian/Alaskan Native	1	0.1	4	0.2	0	0.0	0	0.0	0	0.0	0	0.0	0	0.0	0	0.0
Asian	29	1.5	20	1.0	5	1.6	4	1.2	0	0.0	0	0.0	0	0.0	0	0.0
Black/African American	34	1.7	50	2.6	8	2.5	9	2.6	0	0.0	0	0.0	3	17.6	0	0.0
Hispanic/Latino	92	4.6	113	5.9	6	1.9	18	5.2	0	0.0	1	9.1	1	5.9	0	0.0
International	28	1.4	19	1.0	28	8.8	19	5.5	0	0.0	0	0.0	2	11.8	0	0.0
Not Available	48	2.4	26	1.4	5	1.6	5	1.4	0	0.0	0	0.0	0	0.0	0	0.0
Native Hawaiian/Pacific Islander	0	0.0	0	0.0	0	0.0	0	0.0	0	0.0	0	0.0	0	0.0	0	0.0
Two or More	51	2.6	37	1.9	6	1.9	7	2.0	0	0.0	0	0.0	0	0.0	0	0.0
White	1,709	85.8	1,640	85.9	260	81.8	283	82.0	5	100.0	10	90.9	11	64.7	6	100.0

## Undergraduate Retention and Graduation Rates 2004 - 2023

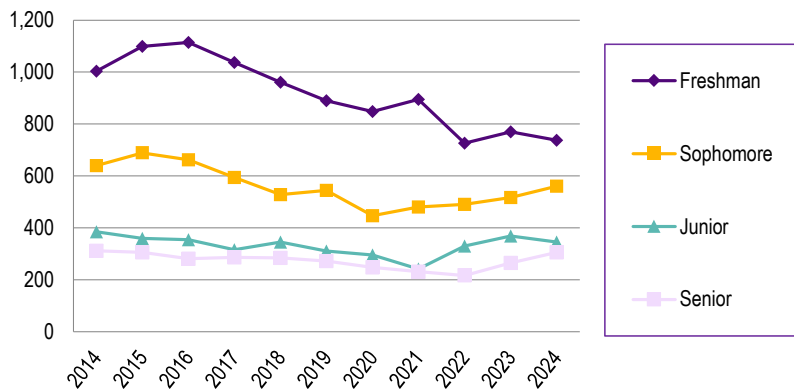
Admit Year	Total First Time Freshmen	Continuing 2nd Year		Graduating 4th Year		Graduating 6th Year	
		N	%	N	%	N	%
2004	1,652	1,337	80.9	584	35.4	1,110	67.2
2005	1,694	1,390	82.1	616	36.4	1,130	66.7
2006	1,684	1,386	82.3	648	38.5	1,116	66.3
2007	1,922	1,608	83.7	708	36.8	1,277	66.4
2008	1,976	1,627	82.3	747	37.8	1,261	63.8
2009	1,917	1,582	82.5	721	37.6	1,296	67.6
2010	1,934	1,586	82.0	759	39.2	1,258	65.0
2011	1,897	1,543	81.3	755	39.8	1,276	67.3
2012	1,678	1,391	82.9	671	40.0	1,096	65.3
2013	1,689	1,430	84.7	731	43.3	1,137	67.3
2014	1,762	1,411	80.1	715	40.6	1,118	63.5
2015	1,874	1,609	85.9	827	44.1	1,288	68.7
2016	1,963	1,593	81.2	848	43.2	1,248	63.6
2017	1,813	1,515	83.6	816	45.0	1,245	68.7
2018	1,653	1,379	83.4	781	47.2	1,120	67.8
2019	1,453	1,243	85.5	746	51.3		
2020	1,474	1,187	80.5	735	49.9		
2021	1,544	1,274	82.5				
2022	1,425	1,203	84.4				
2023	1,543	1,260	81.7				

## Fall Semester Residence Hall Occupancy by Gender and Level 2014 - 2024

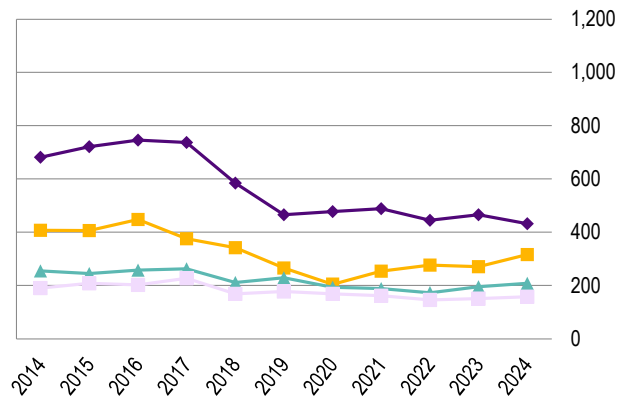
	Female				
	Freshman	Sophomore	Junior	Senior	Unclassified & Graduates
<b>2014</b>	1,003	640	385	312	109
<b>2015</b>	1,099	689	359	306	151
<b>2016</b>	1,114	662	354	281	139
<b>2017</b>	1,037	594	316	286	51
<b>2018</b>	960	528	345	284	64
<b>2019</b>	889	544	311	272	20
<b>2020</b>	848	447	295	248	43
<b>2021</b>	894	480	242	231	57
<b>2022</b>	726	490	330	217	19
<b>2023</b>	770	517	368	265	56
<b>2024</b>	737	560	345	306	56

	Male				
	Freshman	Sophomore	Junior	Senior	Unclassified & Graduates
<b>2014</b>	681	407	255	190	106
<b>2015</b>	721	406	245	208	153
<b>2016</b>	746	448	258	202	148
<b>2017</b>	737	375	263	227	39
<b>2018</b>	584	342	211	169	71
<b>2019</b>	466	266	229	177	23
<b>2020</b>	477	205	193	169	28
<b>2021</b>	488	254	188	162	30
<b>2022</b>	445	276	173	146	17
<b>2023</b>	466	271	195	151	38
<b>2024</b>	432	316	208	158	35

Undergraduates - Female

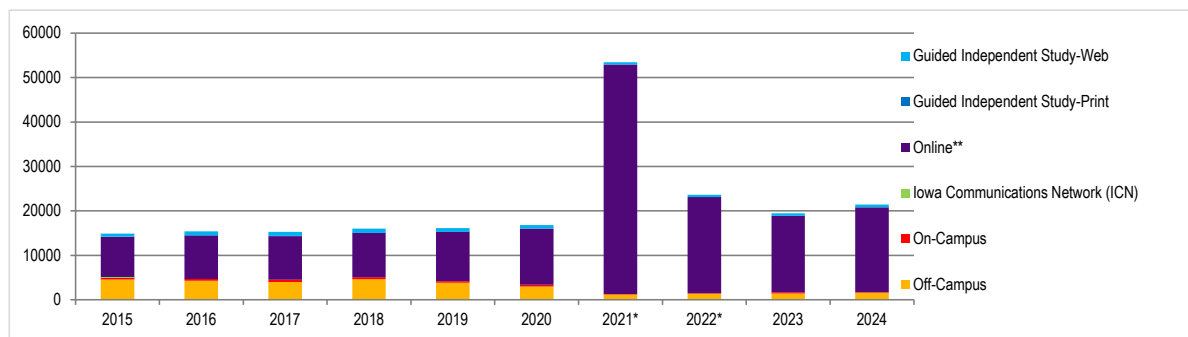


Undergraduates - Male



## Continuing Education Credit Enrollment Trends 2014 - 2024

	2014- 2015	2015- 2016	2016- 2017	2017- 2018	2018- 2019	2019- 2020	2020- 2021*	2021- 2022*	2022- 2023	2023- 2024
<b>Total</b>	<b>14,906</b>	<b>15,378</b>	<b>15,271</b>	<b>15,987</b>	<b>16,099</b>	<b>16,790</b>	<b>53,448</b>	<b>23,611</b>	<b>19,426</b>	<b>21,418</b>
Off-Campus	4,561	4,260	4,014	4,611	3,816	2,992	1,203	1,357	1,397	1,566
On-Campus	514	416	493	446	329	372	114	105	273	115
Iowa Communications Network (ICN)	35	0	0	0	0	0	0	0	0	0
Online**	9,043	9,792	9,836	9,975	11,137	12,620	51,614	21,656	17,192	19,095
Guided Independent Study-Print	40	28	20	8	10	0	0	0	0	0
Guided Independent Study-Web	713	882	908	947	807	806	517	493	564	642



Source: College of Graduate, Research and Online Education

\*Increased enrollment in online courses in 2020-2021 due to the pandemic.

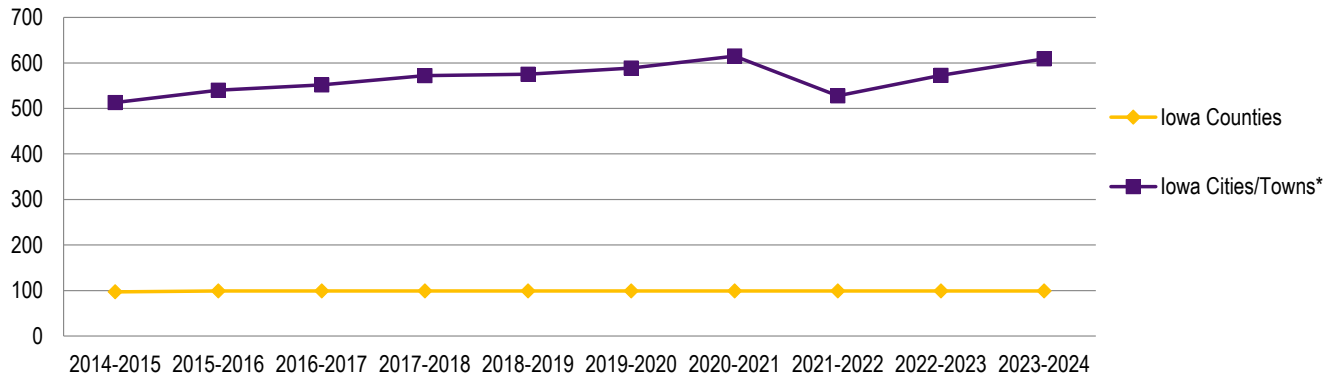
\*\*Includes enrollment in online and hybrid courses.



## Continuing Education Credit Enrollment Trends 2014 - 2024

	Iowa Counties	Iowa Cities/Towns*	Number of Off-Campus Degree and Certificate Programs
2014-2015	97	513	37
2015-2016	99	540	44
2016-2017	99	552	42
2017-2018	99	572	40
2018-2019	99	575	40
2019-2020	99	589	40
2020-2021	99	615	40
2021-2022	99	528	40
2022-2023	99	573	43
2023-2024	99	609	48

Continuing Education Course Locations Offered



*Intentionally blank*



ALUMNI



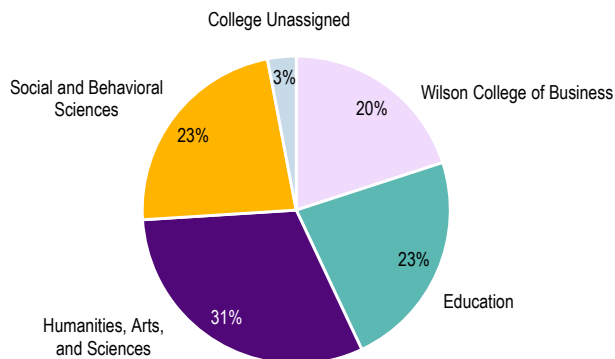


ALUMNI

## Total Alumni by College 2020 - 2024

College	2020		2021		2022		2023		2024	
	N	%	N	%	N	%	N	%	N	%
<b>Subtotal Alumni*</b>	<b>127,221</b>		<b>127,733</b>		<b>129,413</b>		<b>131,358</b>		<b>132,418</b>	
<b>TOTAL Living Alumni**</b>	<b>122,603</b>		<b>123,097</b>		<b>124,775</b>		<b>126,365</b>		<b>127,656</b>	
Wilson College of Business	25,326	19.9	25,581	20.0	25,911	20.0	26,337	20.0	26,598	20.2
Education***	37,133	29.2	36,809	28.8	37,058	28.6	34,430	26.2	30,312	23.1
Humanities, Arts and Sciences	39,154	30.8	39,424	30.9	39,872	30.8	40,441	30.8	40,827	31.1
Social and Behavioral Sciences	21,489	16.9	21,740	17.0	22,074	17.1	25,822	19.7	30,366	23.1
College Unassigned/Interdisciplinary****	4,119	3.2	4,179	3.3	4,498	3.5	4,328	3.3	4,315	3.3

### TOTAL ALUMNI BY COLLEGE



Source: University Advancement 11-27-2024, including summer 2024 graduates

\*Alumni having earned degrees in different colleges are counted once in each college; alumni earning multiple degrees in the same college are counted only once for that college

\*\*Grads counted a single time even when earning multiple degree(s)

\*\*\*Includes 2-Year Teaching Certificates

\*\*\*\*Includes Individual Studies, General Studies, Liberal Studies, Interdisciplinary majors; college unassigned

## Alumni by State 2024\*

State	Alumni	State	Alumni
Alabama	227	Montana	175
Alaska	120	Nebraska	1,803
Arizona	2,301	Nevada	369
Arkansas	301	New Hampshire	77
California	2,265	New Jersey	188
Colorado	2,823	New Mexico	236
Connecticut	133	New York	467
Delaware	44	North Carolina	869
Florida	2,118	North Dakota	107
Georgia	684	Ohio	611
Hawaii	141	Oklahoma	331
Idaho	200	Oregon	572
Illinois	3,969	Pennsylvania	390
Indiana	680	Rhode Island	46
Iowa	81,135	South Carolina	392
Kansas	1,501	South Dakota	608
Kentucky	235	Tennessee	637
Louisiana	139	Texas	3,403
Maine	46	Utah	178
Maryland	307	Vermont	39
Massachusetts	225	Virginia	681
Michigan	657	Washington	831
Minnesota	5,601	West Virginia	33
Mississippi	80	Wisconsin	2,535
Missouri	2,144	Wyoming	128
		District of Columbia	97

Source: *University Advancement*

\*As of 11-27-2024, including summer 2024 graduates

## Alumni by Iowa County 2024

County	Alumni	County	Alumni	County	Alumni	County	Alumni
Adair	67	Decatur	33	Johnson	2,924	Pocahontas	118
Adams	31	Delaware	581	Jones	478	Polk	14,677
Allamakee	339	Des Moines	413	Keokuk	173	Pottawattaw	651
Appanoose	112	Dickinson	434	Kossuth	406	Poweshiek	505
Audubon	81	Dubuque	2,610	Lee	274	Ringgold	46
Benton	910	Emmet	125	Linn	7,662	Sac	187
Black Hawk	12,880	Fayette	615	Louisa	117	Scott	2,977
Boone	433	Floyd	577	Lucas	68	Shelby	112
Bremer	2,218	Franklin	267	Lyon	54	Sioux	224
Buchanan	1,183	Fremont	30	Madison	305	Story	1,641
Buena Vista	262	Greene	166	Mahaska	278	Tama	675
Butler	908	Grundy	982	Marion	578	Taylor	31
Calhoun	235	Guthrie	203	Marshall	980	Union	91
Carroll	481	Hamilton	370	Mills	98	Van Buren	47
Cass	153	Hancock	256	Mitchell	376	Wapello	355
Cedar	351	Hardin	686	Monona	44	Warren	1,284
Cerro Gordo	1,549	Harrison	92	Monroe	93	Washington	433
Cherokee	166	Henry	281	Montgomery	54	Wayne	40
Chickasaw	547	Howard	301	Muscatine	602	Webster	676
Clarke	72	Humboldt	240	O'Brien	196	Winnebago	351
Clay	327	Ida	109	Osceola	40	Winneshiek	678
Clayton	490	Iowa	345	Page	92	Woodbury	655
Clinton	726	Jackson	384	Palo Alto	236	Worth	219
Crawford	159	Jasper	587	Plymouth	313	Wright	318
Dallas	2,121	Jefferson	141				
Davis	74					TOTAL	81,135

## Post-Graduation Status of 2022 - 2023 Bachelor's Degree Recipients

College	Graduates	No Information	Total Responding	Employed*	Continuing Education	Undergrad Education
<b>2022 - 23</b>						
Wilson College of Business	401	87	314	288	19	0
Education	524	71	453	395	50	2
Humanities, Arts and Sciences	635	168	467	349	106	5
Social & Behavioral Sciences	394	102	292	204	82	6
<b>TOTAL</b>	<b>1,954</b>	<b>428</b>	<b>1,526</b>	<b>1,236</b>	<b>257</b>	<b>13</b>
			(1,526 of 1,954)	(1,236 of 1,526)	(257 of 1,526)	(13 of 1,526)
			<b>78.1%</b>	<b>81.0%</b>	<b>16.8%</b>	<b>0.85%</b>

Source: Career Services

\*Method: Data was collected from one month prior to six months after graduation. Collection included surveys, employer reports and social media updates.

To access 2024 data update: <https://careerservices.uni.edu/trends>



## Post-Graduation Status of 2022 - 2023 Graduate Degree Recipients

College	Graduates	No Information	Total Responding	Employed*	Continuing Education	Other
<b>2022 - 23</b>						
Wilson College of Business	5	0	5	5	0	0
Education	27	4	23	21	0	2
Humanities, Arts and Sciences	29	3	26	21	1	4
Social & Behavioral Sciences	22	2	20	12	4	4
Interdisciplinary	0	0	0	0	0	0
<b>TOTAL</b>	<b>83</b>	<b>9</b>	<b>74</b>	<b>59</b>	<b>5</b>	<b>10</b>
			(74 of 83)	(59 of 74)	(5 of 74)	(10 of 74)
			<b>89.2%</b>	<b>79.7%</b>	<b>6.8%</b>	<b>13.51%</b>

Source: Career Services

\*Method: Data was collected from one month prior to six months after graduation. Collection included surveys, employer reports and social media updates.

To access 2024 data update: <https://careerservices.uni.edu/trends>

## Undergraduate Plans for Further Education 2023 - 2024

College	Completed Survey		Accepted to a Graduate/Professional Program		Currently Applying to Programs		Accepted to Another Undergraduate Program	
	N	%	N	%	N	%	N	%
<b>TOTAL</b>	<b>792</b>	<b>100.0</b>	<b>98</b>	<b>100.0</b>	<b>19</b>	<b>100.0</b>	<b>7</b>	<b>100.0</b>
Wilson College of Business	152	19.2%	10	10.2%	1	5.3%	3	42.9%
Education	168	21.2%	2	2.0%	1	5.3%	0	0.0%
Humanities, Arts and Sciences	237	29.9%	43	43.9%	4	21.1%	2	0.0%
Social and Behavioral Sciences	203	25.6%	42	42.9%	11	57.9%	2	0.0%
Interdisciplinary	32	4.0%	1	1.0%	2	10.5%	0	0.0%
			(98 of 792)		(19 of 792)		(7 of 792)	
			<b>12.4%</b>		<b>2.4%</b>		<b>0.9%</b>	

Data collected from December 2023 & Spring 2024 Graduating Senior Surveys

## Graduate Plans for Further Education 2023 - 2024

College	Completed Graduate Program Survey		Accepted to a Graduate/Professional Program		Currently Applying to Programs		No Response for Further Education	
	N	%	N	%	N	%	N	%
<b>TOTAL</b>	<b>123</b>	<b>100.0%</b>	<b>6</b>	<b>100.0%</b>	<b>1</b>	<b>100.0%</b>	<b>116</b>	<b>100.0%</b>
Wilson College of Business	12	9.8%	0	0.0%	0	0.0%	12	10.3%
Education	33	26.8%	1	16.7%	0	0.0%	32	27.6%
Humanities, Arts and Sciences	31	25.2%	2	33.3%	1	100.0%	28	24.1%
Social and Behavioral Sciences	46	37.4%	3	50.0%	0	0.0%	43	37.1%
Interdisciplinary	1	0.8%	0	0.0%	0	0.0%	1	0.9%
			(6 of 123)		(1 of 123)		(116 of 123)	
			<b>4.9%</b>		<b>0.8%</b>		<b>94.3%</b>	

Data collected from December 2023 & Spring 2024 Graduating Senior Surveys

*Intentionally blank*



# FACULTY & STAFF



# FACULTY & STAFF

## Fall 2024 Faculty Profile by College

	Total University	Wilson College of Business	Education	Humanities, Arts & Sciences	Social & Behavioral Sciences	Graduate Research & Online Ed	Library
Faculty	606	59	103	269	132	29	14
Full-Time	425	45	76	199	91	2	12
Part-Time	181	14	27	70	41	27	2
Female	328	21	74	127	74	23	9
Male	278	38	29	142	58	6	5
American Indian/Alaskan Native	0	0	0	0	0	0	0
Asian	52	16	5	22	9	0	0
Black/African American	16	2	2	9	2	0	1
Hispanic/Latino	20	2	1	10	7	0	0
Native Hawaiian/Other Pacific Islander	0	0	0	0	0	0	0
Race and Ethnicity Unknown	4	1	0	3	0	0	0
Two or more races	4	0	0	2	2	0	0
White	510	38	95	223	112	29	13
Professors	151	15	17	79	39	0	1
Associate Professors	140	10	20	71	29	1	9
Assistant Professors	50	6	9	20	14	0	1
Instructors/Lecturers	265	28	57	99	50	28	3
Tenured	305	25	48	153	68	1	10
Tenure-Track	45	6	5	19	14	0	1
Non Tenure-Track	256	28	50	97	50	28	3

Includes Academic Department Heads and other Administrators with Faculty Rank but excludes Deans and above

\*\*The fall 2024 data was pulled using UNIWorks. If updates are necessary because of continuing validation at the time of publication, they will be made to the digital copy only.

## Fall 2024 Faculty by College, Legal Sex and Tenure Status

	Full-Time		Part-Time		Total	
	Female	Male	Female	Male	Female	Male
<b>Wilson College of Business</b>	<b>16</b>	<b>29</b>	<b>5</b>	<b>9</b>	<b>21</b>	<b>38</b>
Tenured	6	18	0	1	6	19
Tenure-Track	2	4	0	0	2	4
Non Tenure-Track	8	7	5	8	13	15
<b>Education</b>	<b>51</b>	<b>25</b>	<b>23</b>	<b>4</b>	<b>74</b>	<b>29</b>
Tenured	29	17	2	0	31	17
Tenure-Track	4	1	0	0	4	1
Non Tenure-Track	18	7	21	4	39	11
<b>Humanities, Arts and Sciences</b>	<b>91</b>	<b>108</b>	<b>36</b>	<b>34</b>	<b>127</b>	<b>142</b>
Tenured	57	87	5	4	62	91
Tenure-Track	11	8	0	0	11	8
Non Tenure-Track	23	13	31	30	54	43
<b>Social and Behavioral Sciences</b>	<b>46</b>	<b>45</b>	<b>28</b>	<b>13</b>	<b>74</b>	<b>58</b>
Tenured	30	35	2	1	32	36
Tenure-Track	10	4	0	0	10	4
Non Tenure-Track	6	6	26	12	32	18

Includes Academic Department Heads and other Administrators with Faculty Rank but excludes Deans and above

Continued on next page

\*\*The fall 2024 data was pulled using UNIWorks. If updates are necessary because of continuing validation at the time of publication, they will be made to the digital copy only.



## Fall 2024 Faculty by College, Legal Sex and Tenure Status (continued)

	Full-Time		Part-Time		Total	
	Female	Male	Female	Male	Female	Male
<b>Graduate, Research &amp; Online Ed</b>	<b>1</b>	<b>1</b>	<b>22</b>	<b>5</b>	<b>23</b>	<b>6</b>
Tenured	0	1	0	0	0	1
Tenure-Track	0	0	0	0	0	0
Non Tenure-Track	1	0	22	5	23	5
<b>Library</b>	<b>8</b>	<b>4</b>	<b>1</b>	<b>1</b>	<b>9</b>	<b>5</b>
Tenured	7	3	0	0	7	3
Tenure-Track	1	0	0	0	1	0
Non Tenure-Track	0	1	1	1	1	2
<b>All Faculty</b>	<b>215</b>	<b>213</b>	<b>115</b>	<b>66</b>	<b>330</b>	<b>279</b>
Tenured	131	162	9	6	140	168
Tenure-Track	28	17	0	0	28	17
Non Tenure-Track	56	34	106	60	162	94

Includes Academic Department Heads and other Administrators with Faculty Rank but excludes Deans and above

\*\*The fall 2024 data was pulled using UNIWorks. If updates are necessary because of continuing validation at the time of publication, they will be made to the digital copy only.

## UNI Workforce by Employment Categories 2014 - 2024

Categories	2014 N	2015 N	2016 N	2017 N	2018 N	2019 N	2020 N	2021 N	2022 N	2023 N	2024 N	5 Year % Change	10 Year % Change
<b>Total Workforce*</b>	<b>1,861</b>	<b>1,835</b>	<b>1,816</b>	<b>1,820</b>	<b>1,811</b>	<b>1,736</b>	<b>1,650</b>	<b>1,584</b>	<b>1,562</b>	<b>1,567</b>	<b>1,561</b>	<b>-10.1</b>	<b>-16.1</b>
Annual Percent Change	2.3	-1.4	-1.0	0.2	-0.5	-4.1	-5.0	-4.0	-1.4	0.3	-0.4		
Executive/Managerial	97	95	102	99	103	101	107	103	101	103	80	2.0	-17.5
Faculty - Tenure/Tenure-Track**	531	517	488	471	450	431	413	383	347	333	311	-26.3	-41.4
Faculty - Term/Renewable Term	47	51	49	54	56	58	60	61	61	70	76	13.0	61.7
Professional/Scientific	622	638	652	668	685	658	608	590	603	621	643	-9.7	3.4
Secretarial/Clerical	249	230	232	228	222	204	187	177	188	178	177	-17.5	-28.9
Technical/Paraprofessional	21	16	19	18	18	19	19	15	15	15	17	-16.7	-19.0
Skilled Crafts	59	57	58	60	54	53	48	48	47	44	42	-21.7	-28.8
Service/Maintenance	235	231	216	222	223	212	208	207	200	203	215	-9.9	-8.5

Source: Office of Human Resource Services

\*Excludes temporary and second appointments

\*\*Excludes some faculty with administrative appointments

\*\*\*The Fall 2024 data was pulled using UNIWorks. If updates are necessary because of continuing validation at the time of publication, they will be made to the digital copy only.

## UNI Workforce Headcount and FTE by Employment Categories 2020 - 2024

Categories	2020		2021		2022		2023		2024	
	N	FTE	N	FTE	N	FTE	N	FTE	N	FTE
<b>Total Workforce*</b>	<b>1,650</b>	<b>1,583.6</b>	<b>1,584</b>	<b>1,529.4</b>	<b>1,562</b>	<b>1,508.1</b>	<b>1,567</b>	<b>1,512.5</b>	<b>1,561</b>	<b>1,501.8</b>
Annual Percent Change		-5.0		-3.4		-1.4		0.3		-4.2
Executive/Managerial	107	107.0	103	103.0	101	101	103	102.6	80	80.0
Faculty -Tenure/Tenure-Track**	413	403.3	383	377.1	347	342.5	333	329.5	311	304.9
Faculty -Term/Renewable Term**	60	60.0	61	60.6	61	60	70	69.4	76	75.4
Professional/Scientific	608	572.0	590	564.0	603	577.4	621	594.7	643	613.2
Secretarial/Clerical	187	181.1	177	171.4	188	178.3	178	168.5	177	167.5
Technical/Paraprofessional	19	18.5	15	14.8	15	14.6	15	14.2	17	16.3
Skilled Crafts	48	48.0	48	47.5	47	47	44	44.0	42	42.0
Service/Maintenance	208	193.7	207	191.0	200	187.3	203	189.6	215	202.6

Source: Office of Human Resource Services

\*Excludes temporary

\*\*Excludes some faculty with administrative appointments

\*\*\*The Fall 2024 data was pulled using UNIWorks. If updates are necessary because of continuing validation at the time of publication, they will be made to the digital copy only.

## UNI Workforce by Race/Ethnicity 2020 - 2024

Categories	2020		2021		2022		2023		2024	
	N	%	N	%	N	%	N	%	N	%
<b>Total Workforce*</b>	<b>1,650</b>		<b>1,584</b>		<b>1,562</b>		<b>1,567</b>		<b>1,561</b>	
Annual Percent Change		-5.0		-8.8		-1.4		0.3		-0.4
American Indian/Alaskan Native	5	0.3	4	0.3	4	0.3	4	0.3	5	0.0
Asian	76	4.6	71	4.5	66	4.2	69	4.4	68	0.0
Black/African American	72	4.4	68	4.3	61	3.9	61	3.9	65	0.0
Hispanic/Latino	48	2.9	44	2.8	50	3.2	60	3.8	65	0.0
White	1,433	86.8	1,381	87.2	1,363	87.3	1,354	86.4	1,337	0.9
Native Hawaiian/Pacific Islander	2	0.1	2	0.1	2	0.1	2	0.1	1	0.0
Two or more	14	0.8	14	0.9	16	1.0	17	1.1	14	0.0
Unknown	0	0.0	0	0.0	0	0.0	0	0.0	6	0.0

Source: Office of Human Resource Services

\*Excludes temporary and second appointments

\*\*The Fall 2024 data was pulled using UNIWorks. If updates are necessary because of continuing validation at the time of publication, they will be made to the digital copy only.

## UNI Workforce by Employment Categories and Race/Ethnicity Fall 2024

	American Indian/ Alaskan Native	Asian	Black/ African American	Hispanic/ Latino	White	Native Hawaiian/ Pacific Islander	Two or More	Total
<b>Total Workforce*</b>	<b>5</b>	<b>68</b>	<b>65</b>	<b>65</b>	<b>1,337</b>	<b>1</b>	<b>14</b>	<b>1,555</b>
Executive/Managerial	0	1	3	2	74	0	0	<b>80</b>
Faculty -Tenure/Tenure-Track**	0	45	8	14	242	0	1	<b>310</b>
Faculty -Term/Renewable Term**	0	4	3	2	65	0	1	<b>75</b>
Professional/Scientific	3	11	29	22	568	0	7	<b>640</b>
Secretarial/Clerical	0	2	6	5	162	0	2	<b>177</b>
Technical/Paraprofessional	0	0	2	2	13	0	0	<b>17</b>
Skilled Crafts	0	0	0	1	41	0	0	<b>42</b>
Service/Maintenance	2	5	14	17	172	1	3	<b>214</b>

Source: Office of Human Resource Services

\*Excludes temporary and second appointments

\*\*Excludes some faculty with administrative appointments

## UNI Workforce Headcount and FTE by Employment Categories and College Fall 2024

	Total University		Wilson College of Business		Education		Humanities, Arts & Sciences		Social & Behavioral Sciences		No Specific College	
	N	FTE	N	FTE	N	FTE	N	FTE	N	FTE	N	FTE
<b>Total Workforce*</b>	<b>1,561</b>	<b>1,501.8</b>	<b>104</b>	<b>98.4</b>	<b>111</b>	<b>107.2</b>	<b>301</b>	<b>281.6</b>	<b>143</b>	<b>138.2</b>	<b>902</b>	<b>876.4</b>
Executive/Managerial	80	80.0	7	7.0	5	5.0	17	17.0	10	10.0	41	41.0
Faculty - Tenure/Tenure-Track**	311	304.9	25	24.5	47	46.8	156	151.8	72	70.8	11	11.0
Faculty - Term/Renewable Term**	76	75.4	16	15.8	22	21.7	26	26.0	11	11.0	1	1.0
Professional/Scientific	643	613.2	46	43.0	26	23.3	69	56.4	34	32.4	468	458.2
Secretarial/Clerical	177	167.5	9	7.2	11	10.5	27	24.6	16	14.0	114	111.2
Technical/Paraprofessional	17	16.3	1	1.0	0	0.0	6	5.8	0	0.0	10	9.5
Skilled Crafts	42	42.0	0	0.0	0	0.0	0	0.0	0	0.0	42	42.0
Service/Maintenance	215	202.6	0	0.0	0	0.0	0	0.0	0	0.0	215	202.6

Source: Office of Human Resource Services

\*Excludes temporary

\*\*Excludes some faculty with administrative appointments

\*\*\*The Fall 2024 data was pulled using UNIWorks. If updates are necessary because of continuing validation at the time of publication, they will be made to the digital copy only.

## UNI Workforce by Employment Categories, Legal Sex and College Fall 2024

Fall 2024	Total University		Wilson College of Business		Education		Humanities, Arts & Sciences		Social & Behavioral Sciences		No Specific College	
	F	M	F	M	F	M	F	M	F	M	F	M
<b>Total Workforce*</b>	<b>881</b>	<b>678</b>	<b>58</b>	<b>45</b>	<b>85</b>	<b>26</b>	<b>159</b>	<b>141</b>	<b>83</b>	<b>60</b>	<b>496</b>	<b>406</b>
Executive/ Managerial	40	40	2	5	2	3	9	8	4	6	23	18
Faculty - Tenure/ Tenure-Track**	150	160	6	19	32	15	65	90	38	34	9	2
Faculty - Term/ Renewable Term	46	29	8	7	16	6	17	9	5	6	0	1
Professional/ Scientific	375	268	33	13	25	1	42	27	20	14	255	213
Secretarial/ Clerical	165	12	9	0	10	1	26	1	16	0	104	10
Technical/ Paraprofessional	2	15	0	1	0	0	0	6	0	0	2	8
Skilled Crafts	1	41	0	0	0	0	0	0	0	0	1	41
Service/ Maintenance	102	113	0	0	0	0	0	0	0	0	102	113

Source: Office of Human Resource Services

\*Excludes temporary and second appointments

\*\*Excludes some faculty with administrative appointments

\*\*\*The Fall 2024 data was pulled using UNIWorks. If updates are necessary because of continuing validation at the time of publication, they will be made to the digital

\*\*\*\*1 Faculty Tenure indicated: "Prefer not to answer" for legal sex; 1 Faculty Term indicated: "Prefer not to answer" for legal sex

## UNI Workforce by Employment Categories, Level and College Fall 2024

Fall 2024	Total University		Wilson College of Business		Education		Humanities, Arts & Sciences		Social & Behavioral Sciences		No Specific College	
	F-T	P-T	F-T	P-T	F-T	P-T	F-T	P-T	F-T	P-T	F-T	P-T
<b>Total Workforce*</b>	<b>1,480</b>	<b>81</b>	<b>91</b>	<b>13</b>	<b>108</b>	<b>3</b>	<b>268</b>	<b>33</b>	<b>132</b>	<b>11</b>	<b>881</b>	<b>21</b>
Executive/ Managerial	80	0	7	0	5	0	17	0	10	0	41	0
Faculty - Tenure/ Tenure-Track**	297	14	24	1	46	1	147	9	69	3	11	0
Faculty - Term/ Renewable Term**	74	2	15	1	21	1	26	0	11	0	1	0
Professional/ Scientific	606	37	40	6	26	0	52	17	31	3	457	11
Secretarial/ Clerical	154	23	4	5	10	1	21	6	11	5	108	6
Technical/ Paraprofessional	15	2	1	0	0	0	5	1	0	0	9	1
Skilled Crafts	42	0	0	0	0	0	0	0	0	0	42	0
Service/ Maintenance	212	3	0	0	0	0	0	0	0	0	212	3

Source: Office of Human Resource Services

\*Excludes temporary and second appointments

\*\*Excludes some faculty with administrative appointments

\*\*\*The Fall 2024 data was pulled using UNIWorks. If updates are necessary because of continuing validation at the time of publication, they will be made to the digital copy only.



## UNI Workforce by Employment Categories, Level and Legal Sex Fall 2024

Fall 2024	Total University			Female			Male		
	F-T	P-T	Phased	F-T	P-T	Phased	F-T	P-T	Phased
<b>Total Workforce*</b>	<b>1,479</b>	<b>63</b>	<b>17</b>	<b>818</b>	<b>54</b>	<b>9</b>	<b>661</b>	<b>9</b>	<b>8</b>
Executive/Managerial	80	0	0	40	0	0	40	0	0
Faculty - Tenure/Tenure Track**	296	1	13	141	1	8	155	0	5
Faculty - Term/Renewable Term**	74	1	0	46	0	0	28	1	0
Professional/Scientific	606	34	3	346	28	1	260	6	2
Secretarial/Clerical	154	23	0	142	23	0	12	0	0
Technical/Paraprofessional	15	1	1	2	0	0	13	1	1
Skilled Crafts	42	0	0	1	0	0	41	0	0
Service/Maintenance	212	3	0	100	2	0	112	1	0

Source: Office of Human Resource Services

\*Excludes temporary and second appointments

\*\*Excludes some faculty with administrative appointments

\*\*\*The Fall 2024 data was pulled using UNIWorks. If updates are necessary because of continuing validation at the time of publication, they will be made to the digital copy only.

\*\*\*\*1 Faculty Tenure indicated: "Prefer not to answer" for legal sex; 1 Faculty Term indicated: "Prefer not to answer" for legal sex

## UNI Temporary Workforce Headcount and FTE by Employment Categories 2020 - 2024

Categories	2020		2021		2022		2023		2024	
	N	FTE	N	FTE	N	FTE	N	FTE	N	FTE
<i>Total Temporary Workforce*</i>	161	84.9	183	96.5	185	100.3	210	104.7	232	103.8
Executive/Managerial	0	0.0	0	0.0	0	0.0	0	0.0	0	0.0
Adjunct Faculty	125	63.9	137	74.6	144	82.5	165	87.6	192	93.6
Professional/Scientific	18	15.3	22	13.2	16	10.0	10	6.1	27	5.5
Merit Temporary Total (see Breakdown below)	18	5.7	24	8.7	25	7.8	35	11.0	13	4.7
<i>Merit Temporary Workforce (Breakdown)</i>	18	5.7	24	8.7	24	7.8	35	10.9	13	4.7
Secretarial/Clerical	1	0.1	2	0.9	2	0.5	3	0.9	2	0.2
Technical/Paraprofessional	0	0.0	2	1.1	2	0.5	1	0.6	1	0.6
Skilled Crafts	0	0.0	0	0.0	0	0.0	0	0	0	0.0
Service/Maintenance	17	5.6	20	6.7	20	6.8	31	9.4	10	3.8

Source: Office of Human Resource Services

\*Excludes some faculty with administrative appointments

\*\*The Fall 2024 data was pulled using UNIWorks. If updates are necessary because of continuing validation at the time of publication, they will be made to the digital copy only.



# BUDGET & FINANCE



# BUDGET & FINANCE

## Statement of Revenues, Expenses and Changes In Net Position 2020 - 2024

	2020	2021	2022	2023	2024
<b>OPERATING REVENUES</b>					
Tuition & Fees	\$87,939,829	\$82,346,130	\$84,129,900	\$84,772,114	\$89,640,893
Less Scholarship Allowance	-26,362,669	-29,429,560	-38,172,189	-32,327,007	-37,039,684
Net Tuition & Fees	\$61,577,160	\$52,916,570	\$45,957,711	\$52,445,107	\$52,601,209
Federal Grants and Contracts	10,471,492	9,835,841	12,136,292	15,689,192	16,818,425
State and Local Grants and Contracts	1,536,350	1,878,879	2,596,650	2,534,424	5,035,266
Nongovernmental Grants and Contracts	4,754,428	4,639,669	5,645,756	5,492,589	5,228,071
Sales and Services of Educational Activities	4,504,409	3,414,584 *	5,263,594	1,518,661	2,093,341
Interest on Student Loans	247,504	93,923	276,750	94,067	45,210
Other Operating Revenue	1,058,018	774,098	1,208,660	675,870	725,839
Auxiliary Enterprises	52,258,082	45,072,894 *	41,278,457	46,601,132	49,999,035
<b>Total Operating Revenues</b>	<b>\$136,407,443</b>	<b>\$118,626,458</b>	<b>\$114,363,870</b>	<b>\$125,051,042</b>	<b>\$132,546,396</b>
<b>OPERATING EXPENSES</b>					
Instruction	\$78,078,950	\$73,061,947	\$68,243,219	\$67,112,515	\$70,185,764
Research	2,437,009	2,655,105	2,598,518	3,312,622	3,204,359
Public Service	19,158,773	16,317,521 *	18,188,805	19,743,305	15,738,791
Academic Support	24,672,884	27,256,393	25,964,383	24,448,375	25,853,471
Student Services	10,377,045	9,287,237	11,534,774	12,064,964	13,259,479
Institutional Support	15,173,659	18,146,749	19,902,003	22,632,655	15,838,592
Operation and Maintenance of Plant	26,231,184	26,448,363	25,618,012	26,368,303	24,436,680
Scholarships and Fellowships	8,232,105	5,293,125	3,507,860	1,132,414	1,764,633
Depreciation	19,463,291	19,412,520 *	20,320,784	19,128,176	20,533,666
Other Operating Expenses	286,480	132,652	403,496	247,288	132,667
Auxiliary Enterprises	54,409,747	49,346,851	49,409,190	52,336,546	53,837,892
<b>Total Operating Expenses</b>	<b>\$258,521,127</b>	<b>\$247,358,463</b>	<b>\$245,691,044</b>	<b>\$248,527,163</b>	<b>\$244,785,994</b>
Operating (Loss)	(122,113,684)	(128,732,005)	(131,327,174)	(123,476,121)	(112,239,598)

Continued on next page

\*Methodology change due to changes in GASB requirements. Numbers differ in previous Fact Books.



## Statement of Revenues, Expenses and Changes In Net Position 2020 - 2024<sup>\*</sup> (continued)

	2020	2021	2022	2023	2024
<b>NON-OPERATING REVENUES (EXPENSES)</b>					
State Appropriations	\$108,523,295	\$107,046,544	\$107,094,092	\$108,682,526	\$103,895,942
Federal Grants and Contracts	17,966,861	32,443,810	21,754,768	10,305,850	11,358,820
Nonfederal Gifts, Grants and Contracts	3,127,041	3,541,783	4,699,208	4,504,473	4,183,704
Investment Income	3,090,283	9,341,706	(5,160,813)	4,564,878	8,593,669
Interest on Indebtedness	(2,881,783)	(2,399,034) *	(2,224,423)	(2,146,968)	(1,875,637)
Miscellaneous Revenue/(Expense)	1,070,005	1,062,407	1,199,458	650,462	(969,973)
<b>Net Non-Operating Revenue</b>	<b>\$130,895,702</b>	<b>\$151,037,216</b>	<b>\$127,362,290</b>	<b>\$126,561,221</b>	<b>\$125,186,525</b>
<b>Gain/(Loss) Before Other Revenues</b>	<b>\$8,782,018</b>	<b>\$22,305,211</b>	<b>-\$3,964,884</b>	<b>\$3,085,100</b>	<b>\$12,946,927</b>
Capital Appropriations	\$3,566,940	\$3,773,050	\$6,068,433	\$18,895,719	\$18,383,063
Capital Gifts, Grants and Contracts	2,269,111	1,563,244	4,172,016	3,751,259	10,509,877
<b>Total Other Revenues</b>	<b>\$5,836,051</b>	<b>\$5,336,294</b>	<b>\$10,240,449</b>	<b>\$22,646,978</b>	<b>\$28,892,940</b>
<b>Change in Net Position</b>	<b>\$14,618,069</b>	<b>\$27,641,505</b>	<b>\$6,275,565</b>	<b>\$25,732,078</b>	<b>\$41,839,867</b>
<b>NET POSITION</b>					
Total Net Position – July 1	\$388,439,078	\$403,057,147	\$430,698,652	\$436,974,217	\$462,706,295
Total Net Position – June 30	\$403,057,147	\$430,698,652	\$436,974,217	\$462,706,295	\$504,546,162

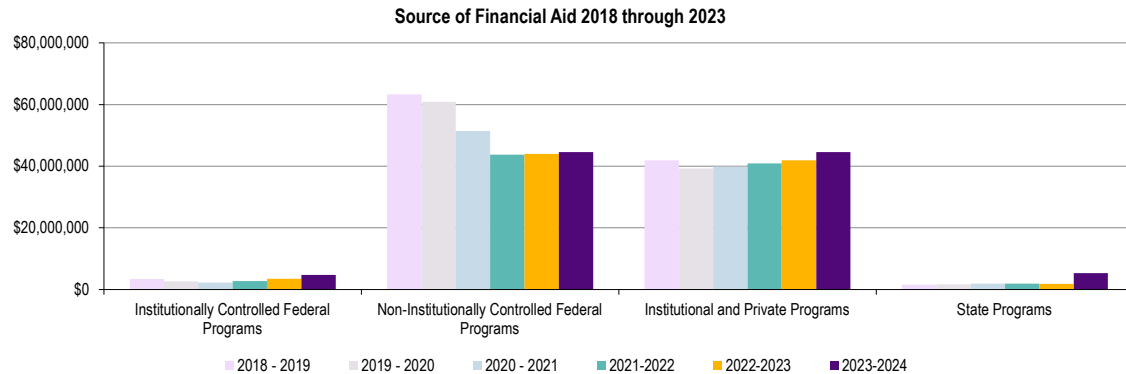
Source: Financial Accounting and Reporting Services

<sup>\*</sup>Fiscal year runs July 1 through June 30

<sup>\*</sup>Methodology change due to changes in GASB requirements. Numbers differ in previous Fact Books.

## Financial Aid Programs by Source of Aid 2018 - 2019 to 2023 - 2024

	2018 - 2019	2019 - 2020	2020 - 2021	2021-2022	2022-2023	2023-2024	5 Year % Change
<b>TOTAL</b>	\$110,162,366	\$104,309,611	\$95,242,114	\$89,243,127	\$91,207,744	\$99,175,720	-10.0%
Institutionally Controlled Federal Programs	\$3,389,793	\$2,603,632	\$2,226,749	\$2,764,466	\$3,440,785	\$4,735,086	39.7%
Non-Institutionally Controlled Federal Programs	\$63,299,755	\$60,863,357	\$51,312,148	\$43,662,439	\$43,984,489	\$44,552,576	-29.6%
Institutional and Private Programs	\$41,947,236	\$39,213,982	\$39,802,384	\$40,888,777	\$41,959,724	\$44,585,696	6.3%
State Programs	\$1,525,582	\$1,628,640	\$1,900,833	\$1,927,445	\$1,822,746	\$5,302,362	247.6%



Source: Financial Aid Office

## Student Financial Aid Programs 2021 - 2022 to 2023 - 2024

	2021-2022			2022-2023			2023-2024		
	Number of Awards	Value of Awards	Mean Award	Number of Awards	Value of Awards	Mean Award	Number of Awards	Value of Awards	Mean Award
<b>TOTAL</b>	31,591	\$89,243,127	\$2,825	30,829	\$91,207,744	\$2,959	32,366	\$99,175,720	\$3,064
<b>Institutional &amp; Private Gift Aid</b>	16,036	\$28,356,875	\$1,768	15,152	\$29,177,324	\$1,926	14,459	\$29,716,394	\$2,055
Institutional Scholarships/Grants	9,714	15,027,689	\$1,547	8,991	15,179,072	\$1,688	8,136	\$14,974,140	\$1,840
Corporate/Private Scholarships	5,775	9,373,080	\$1,623	5,632	10,142,044	\$1,801	5,765	\$10,613,194	\$1,841
Athletic Scholarships	547	3,956,106	\$7,232	529	3,856,209	\$7,290	558	\$4,129,059	\$7,400
<b>Federal &amp; State Grants</b>	4,455	\$13,896,313	\$3,119	4,604	\$14,555,016	\$3,161	6,853	\$20,926,319	\$3,054
Federal Pell Grant	2,381	9,650,812	\$4,053	2,372	9,832,194	\$4,145	2,518	\$11,367,528	\$4,515
Supplemental Education Opportunity Grant	754	644,443	\$855	642	612,869	\$955	530	\$471,242	\$889
TEACH Grant	484	1,395,581	\$2,883	566	1,689,424	\$2,985	648	\$1,941,151	\$2,996
Other Federal Grant/Scholarship Programs	69	280,730	\$4,069	320	623,302	\$1,948	949	\$1,844,036	\$1,943
All Iowa Opportunity Scholarship	103	448,893	\$4,358	97	442,102	\$4,558	86	\$422,954	\$4,918
Iowa Workforce Grant	-	0	\$0	-	0	\$0	848	\$1,727,011	\$0
National Guard	83	555,625	\$6,694	80	517,615	\$6,470	84	\$570,029	\$6,786
Vocational Rehabilitation	91	276,083	\$3,034	103	280,984	\$2,728	117	\$611,146	\$5,223
Commission for the Blind	5	61,287	\$12,257	4	36,446	\$9,112	4	\$38,667	\$9,667
Gear Up	143	179,820	\$1,257	173	419,625	\$2,426	136	\$331,821	\$2,440
Other State Grants	342	403,039	\$1,178	247	100,456	\$407	933	\$1,600,735	\$1,716
<b>Loans</b>	8,462	\$39,135,108	\$4,625	8,453	\$39,559,523	\$4,680	8,286	\$39,625,870	\$4,782
Federal Direct Loans	7,759	33,927,470	\$4,373	7,672	34,084,719	\$4,443	7,417	\$32,922,682	\$4,439
Alternative Loans	703	5,207,638	\$7,408	781	5,474,804	\$7,010	869	\$6,703,188	\$7,714
<b>Employment</b>	2,638	\$7,854,831	\$2,978	2,620	\$7,915,880	\$3,021	2,768	\$8,907,138	\$3,218
Federal Work Study	322	479,421	\$1,489	291	497,355	\$1,709	362	\$648,765	\$1,792
Graduate Teaching, Research Assistantships	227	1,717,725	\$7,567	229	1,648,009	\$7,197	225	\$1,614,896	\$7,177
UNI Employment	2,089	5,657,685	\$2,708	2,100	5,770,517	\$2,748	2,181	\$6,643,478	\$3,046

Source: Financial Aid Office



## Full-Time Undergraduate Student Tuition and Fees 2004 - 2005 to 2024 - 2025

Academic Year	Academic Services	Activity	Athletics	Computing/ Technology	Facilities	General Student Services	Health Services	Health Facility	Recreation Fee	Surcharge	Total Mandatory Fees	UG Tuition	Total Tuition & Mandatory Fees
2004-05				\$165	\$180	\$190	\$124	\$26			\$685	\$4,702	\$5,387
2005-06				\$116	\$198	\$222	\$144	\$32			\$712	\$4,890	\$5,602
2006-07				\$178	\$232	\$231	\$152	\$33		\$200	\$1,026	\$5,086	\$6,112
2007-08				\$187	\$237	\$223	\$158	\$33			\$838	\$5,352	\$6,190
2008-09				\$193	\$237	\$227	\$162	\$33			\$852	\$5,524	\$6,376
2009-10		\$35		\$200	\$235	\$215	\$166	\$29		\$100	\$980	\$5,756	\$6,736
2010-11		\$45		\$212	\$235	\$213	\$172	\$29			\$906	\$6,102	\$7,008
2011-12		\$60		\$229	\$235	\$213	\$176	\$29			\$942	\$6,408	\$7,350
2012-13		\$65		\$252	\$235	\$217	\$189	\$29			\$987	\$6,648	\$7,635
2013-14		\$67		\$258	\$220	\$258	\$203	\$31			\$1,037	\$6,648	\$7,685
2014-15		\$68		\$270	\$224	\$295	\$213	\$31			\$1,101	\$6,648	\$7,749
2015-16		\$71		\$290	\$229	\$320	\$228	\$31			\$1,169	\$6,648	\$7,817
2016-17		\$114		\$300	\$261	\$225	\$236	\$31			\$1,167	\$7,098	\$8,265
2017-18		\$120		\$304	\$232	\$230	\$250	\$30			\$1,166	\$7,456	\$8,622
2018-19		\$122		\$300	\$242	\$230	\$258	\$31			\$1,183	\$7,666	\$8,849
2019-20		\$122		\$300	\$242	\$230	\$258	\$31			\$1,183	\$7,666	\$8,849
2020-21		\$122		\$300	\$242	\$230	\$258	\$31			\$1,183	\$7,666	\$8,849
2021-22		\$122		\$300	\$242	\$230	\$258	\$31			\$1,183	\$7,780	\$8,963
2022-23		\$122		\$306	\$242	\$241	\$263	\$36			\$1,210	\$8,111	\$9,321
2023-24		\$123		\$315	\$243	\$244	\$265	\$36	\$106		\$1,332	\$8,396	\$9,728
2024-25		\$130		\$324	\$245	\$253	\$271	\$36	\$113		\$1,372	\$8,564	\$9,936

Source: <https://admissions.uni.edu/cost-aid/cost-attendance>

All Non-College of Business Resident students

Recreation Fees were not included prior to 2023-24

## Full-Time Graduate Student Tuition and Fees 2004 - 2005 to 2024 - 2025

Academic Year	Academic Services	Activity	Athletics	Computing/Technology	Facilities	General Student Services	Health Services	Health Facility	Recreation Fee	Surcharge	Total Mandatory Fees	Grad Tuition	Total Tuition & Mandatory Fees
2004-05				\$165	\$180	\$190	\$124	\$26			\$685	\$5,488	\$6,173
2005-06				\$116	\$198	\$222	\$144	\$32			\$712	\$5,708	\$6,420
2006-07				\$178	\$232	\$231	\$152	\$33		\$200	\$1,026	\$5,936	\$6,962
2007-08				\$187	\$237	\$223	\$158	\$33			\$838	\$6,246	\$7,084
2008-09				\$193	\$237	\$227	\$162	\$33			\$852	\$6,446	\$7,298
2009-10		\$35		\$200	\$235	\$215	\$166	\$29		\$100	\$980	\$6,716	\$7,696
2010-11		\$45		\$212	\$235	\$213	\$172	\$29			\$906	\$7,120	\$8,026
2011-12		\$60		\$229	\$235	\$213	\$176	\$29			\$942	\$7,476	\$8,418
2012-13		\$65		\$252	\$235	\$217	\$189	\$29			\$987	\$7,756	\$8,743
2013-14		\$67		\$258	\$220	\$258	\$203	\$31			\$1,037	\$7,756	\$8,793
2014-15		\$68		\$270	\$224	\$295	\$213	\$31			\$1,101	\$7,912	\$9,013
2015-16		\$71		\$290	\$229	\$320	\$228	\$31			\$1,169	\$8,050	\$9,219
2016-17		\$114		\$300	\$230	\$225	\$236	\$31			\$1,136	\$8,592	\$9,728
2017-18		\$120		\$304	\$232	\$230	\$250	\$30			\$1,166	\$8,950	\$10,116
2018-19		\$122		\$300	\$242	\$230	\$258	\$31			\$1,183	\$9,159	\$10,342
2019-20		\$122		\$300	\$242	\$230	\$258	\$31			\$1,183	\$9,159	\$10,342
2020-21		\$122		\$300	\$242	\$230	\$258	\$31			\$1,183	\$9,159	\$10,342
2021-22		\$122		\$300	\$242	\$230	\$258	\$31			\$1,183	\$9,296	\$10,479
2022-23		\$122		\$306	\$242	\$241	\$263	\$36			\$1,210	\$9,691	\$10,901
2023-24		\$123		\$315	\$243	\$244	\$265	\$36	\$106		\$1,332	\$10,030	\$11,362
2024-25		\$130		\$324	\$245	\$253	\$271	\$36	\$113		\$1,372	\$10,230	\$11,602

Source: <https://admissions.uni.edu/cost-aid/2024-2025-graduate-tuition-fees>

Resident students

Recreation Fees were not included prior to 2023-24

## Sponsored Project Proposals and Awards 2014 - 2015 to 2023 - 2024

Fiscal Year	Proposals (P)		Awards (A)	
	N	Amount (\$)	N	Amount (\$)
2014 - 2015	190	39,917,144	143	38,862,509
2015 - 2016	209	41,799,143	97	39,067,751
2016 - 2017	236	40,997,126	203	37,767,444
2017 - 2018	236	45,623,285	186	39,476,790
2018 - 2019	249	51,927,378	190	40,865,042
2019 - 2020	257	75,775,052	163	46,874,887
2020 - 2021	199	85,136,601	169	72,363,066
2021 - 2022	172	37,530,763	142	46,499,057
2022 - 2023	179	42,413,331	134	42,719,644
2023 - 2024	179	43,756,631	134	35,088,062

Highlights from the 2021 fiscal year:

108 new project applications in FY24.

\$6.2 million in sponsored funding was directed at outreach projects that impacted people, communities and environments throughout Iowa.

\$21 million in sponsored funding supported student services and strengthening academic support programming at UNI.

\$5.0 million in foundation supported research.

\$6.0 million in funding for research.

Source: Office of Research and Sponsored Programs and UNI Foundation

*Intentionally blank*



# GENERAL INFORMATION







# GENERAL INFORMATION

## Library Statistics 2019 - 2024

	2019	2020	2021	2022	2023	2024
<b>PERSONNEL – FTE</b>						
Library Faculty	16	17	17	16	16	16
Library Associates	12	11	11	10	9	11
Library Staff	20	20	18	19	17	17
Student Employees (FTE)*	15	12	12	13	14	26
Student Employees (Headcount)*	81	78	67	70	75	70
<b>HOLDINGS/ACCESS</b>						
Books	851,097	849,096	848,811	840,716	808,638	813,523
Periodicals	160,237	158,847	156,488	157,079	156,455	156,262
Electronic Books	517,957	407,726	481,387	591,889	637,384	880,210
Electronic Journals	104,938	89,939	77,666	100,272	106,623	106,170
Maps (sheets and folded)	38,756	38,782	38,682	38,755	38,962	38,934
Maps (electronic)	3,600	3,583	4,066	4,063	4,063	4,089
<b>Government Documents (all)</b>						
Paper	72,681	72,809	73,094	72,657	72,812	72,715
Microform	71,893	71,812	70,982	69,851	64,632	62,122
CD/DVD/Floppy	386	379	357	357	357	379
<b>Subscriptions</b>						
Periodicals (paper - with newspapers)	408	412	409	249	196	192
Periodicals (electronic - with newspapers)	782	683	597	591	540	500
Databases	218	118	111	101	77	69
<b>Audiovisuals</b>						
Sound Recordings	15,496	14,758	14,960	14,947	13,897	13,629
Films and Videotapes	9,997	10,519	9,739	10,054	9,859	8,777
Other Nonprint Materials	4,166	4,251	4,334	4,659	4,671	5,072

Continued on next page

## Library Statistics 2019 - 2024

	2019	2020	2021	2022	2023	2024
<b>HOLDINGS/ACCESS (continued)</b>						
<b>Microform Units (not government documents)</b>						
Microfilm	28,723	30,398	30,395****	30,395	30,302	28,677
Microfiche**	75,209	2,338	2,325	2,324	2,304	2,303
Microcards	4,598	4,598	4,598	4,598	4,598	4,598
Archives & Manuscripts (linear feet)	4,975	5,469	5,478	5,483	6,215	6,165
<b>SERVICES</b>						
Building Entrance Count	554,031	394,165	232,595	332,290	344,239	349,466
Circulation (first time loans)	76,816	49,258	23,108	27,810	24,308	23,766
Reference Transactions (all)	8,079	9,276	7,381	9,655****	8,386	8,748
<b>Interlibrary Loan</b>						
Borrowed	3,124	2,878	2,321	2,412	2,434	2,118
Loaned	3,815	4,013	3,526	2,561	2,632	2,600
<b>Library Instruction</b>						
Classes	448	323	275	312	252	246
Persons Served	9,720	7,906	6,027	7,618	5,157	5,409
<b>Document Delivery</b>						
On Campus	***	***	***	***	***	***
Off Campus	1,035	1,253	1,153	836	886	725

Source: The Rod Library

\* Stats from Museum and IRTS have been added since 2014 and 2017 respectively.

\*\* Starting in 2020, statistic captured based on updated search capability.

\*\*\* Statistics captured with no distinction between on campus and off campus.

\*\*\*\* Change from previous Fact Books



## International Students by Country Fall 2024

Country	N	Country	N	Country	N
Australia	1	Indonesia	1	Saudi Arabia	3
Austria	1	Italy	1	Slovenia	2
Bahrain	1	Jamaica	1	South Africa	1
Bangladesh	12	Japan	3	South Korea	1
Bolivia	1	Kazakhstan	1	Spain	1
Brazil	3	Kosovo	1	Sri Lanka	1
Burkina Faso	1	Kuwait	3	Sweeden	1
Canada	1	Lao People's Democratic Republic	1	Tajikistan	1
Chad	1	Latvia	1	Tanzania	2
China	34	Lesotho	1	Thailand	1
Colombia	3	Mexico	1	Togo	1
Congo, The Democratic Republic	2	Mongolia	1	Trinidad and Tobago	1
Denmark	1	Nepal	1	Turkey	1
Egypt	2	Netherlands	1	Turkmenistan	1
Ethiopia	2	Nicaragua	1	Uganda	2
Finland	1	Nigeria	8	Ukraine	8
France	1	Pakistan	13	United Kingdon	1
Ghana	26	Papua New Guinea	1	Uzbekistan	1
Hati	1	Peru	2	Venezuela	1
Hungary	1	Serbia	1	Viet Nam	4
India	22	Russia	2	Zimbabwe	3
				<b>Total</b>	<b>202</b>
				<b>Number of Countries</b>	<b>54</b>

Includes undergraduates and graduates

## International Students by College 2019 - 2024

College	2019	2020	2021	2022	2023	2024	1 Yr % Change	5 Yr % Change
<b>TOTAL</b>	<b>385</b>	<b>350</b>	<b>236</b>	<b>145</b>	<b>175</b>	<b>202</b>		
Annual Percent Change	-19.8	-9.1	-32.6	-38.6	20.7	15.4	15.4	-47.5
Wilson College of Business	164	181	92	37	46	73	58.7	-55.5
Education	40	22	19	20	7	5	-28.6	-87.5
Humanities, Arts and Sciences	100	91	59	46	68	72	5.9	-28.0
Social and Behavioral Sciences	33	24	18	23	26	30	15.4	-9.1
No Specific College	48	32	48	19	28	22	-21.4	-54.2

Includes undergraduates and graduates

## Top 5 Countries of Origin for International Students 2014 - 2024

Fall	Country	N	Country	N	Country	N	Country	N	Country	N	Total International Students
2014	Saudi Arabia	197	China	138	Brazil	63	India	22	Hong Kong Japan	16 16	626
2015	Saudi Arabia	211	China	144	Brazil	38	India	25	Malaysia	15	616
2016	Saudi Arabia	163	China	116	India	30	Hong Kong	21	Canada	18	548
2017	Saudi Arabia	135	China	135	India	30	Hong Kong	26	Pakistan	23	547
2018	China	176	Saudi Arabia	95	India	28	Pakistan	19	Japan	16	480
2019	China	140	Saudi Arabia	67	India	22	Oman	13	Canada	10	385
2020	China	154	Saudi Arabia	37	India	14	Hong Kong	12	Malaysia	10	350
2021	China	67	Saudi Arabia	18	Hong Kong	13	Pakistan	13	India	11	236
2022	China	24	India	15	Pakistan	9	Saudi Arabia	9	France	5	145
2023	China	26	Ghana	15	Pakistan	12	India	10	Nigeria	9	175
2024	China	34	Ghana	26	India	22	Pakistan	13	Bangladesh	12	202

## Study Abroad Students by College & Term Fall 2023/Spring 2024/Summer 2024\*

College	N	%	Classification	N	%
College of Business	70	26%	Freshman	4	1%
College of Education	23	9%	Sophomore	24	9%
College of Humanities, Arts and Sciences	88	33%	Junior	60	22%
College of Social and Behavioral Sciences	79	29%	Senior	170	63%
Other-Undergraduate	9	3%	Graduate	11	4%
<b>Total</b>	<b>269</b>		<b>Total</b>	<b>269</b>	

Type of Program	Academic Year	Fall 2023	Spring 2024	Summer 2024	Total
Semester	3	25	36	175	239
Winter Short-Term	--	--	30		30
<b>Total</b>					<b>269</b>

Source: *Study Abroad Center*

Includes undergraduates and graduates

Does not consider Camp Adventure, International Student Teaching, Athletics, nor School of Music

## Study Abroad Students and Incoming Exchange Students By Country

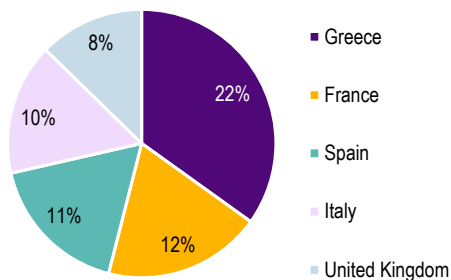
Study Abroad Students AY 2023

Top 5 Countries	N
Greece	58
France	31
Spain	30
Italy	26
United Kingdom	21
<b>Students</b>	<b>269</b>

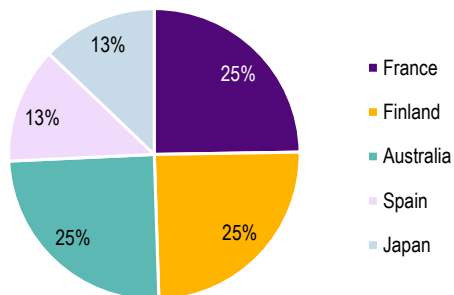
Incoming International Exchange Students Fall 2023/Spring 2024

Country	N
France	2
Finland	2
Australia	2
Spain	1
Japan	1
<b>Total</b>	<b>8</b>

Study Abroad Students



Incoming International Exchange



Source: Study Abroad Center

Includes undergraduates and graduates

Does not consider Camp Adventure, International Student Teaching, Athletics, nor School of Music

For multiple destinations in one program, total count was included for all countries

## UNI Services to Businesses, Communities and Local Government

Divisions	Location	Telephone	Website
Advance Iowa	Cedar Falls, IA	319-273-4322	<a href="https://advanceiowa.com">https://advanceiowa.com</a>
Business & Community Services	Cedar Falls, IA	319-273-6069	<a href="https://bcs.uni.edu">https://bcs.uni.edu</a>
Center for Business Growth and Innovation	Cedar Falls, IA	319-273-4344	<a href="https://cbgi.uni.edu">https://cbgi.uni.edu</a>
Center for Energy and Environmental Education	Cedar Falls, IA	319-273-2573	<a href="https://ceee.uni.edu">https://ceee.uni.edu</a>
UNI Family Business Center	Cedar Falls, IA	319-273-2311	<a href="https://unifamilybusinesscenter.com/">https://unifamilybusinesscenter.com/</a>
Geoinformatics Training, Research, Education and Extension	Cedar Falls, IA	319-273-3877	<a href="https://www.geotree.uni.edu/en/">https://www.geotree.uni.edu/en/</a>
Heartland Economic Development Course	Cedar Falls, IA	319-273-6944	<a href="https://bcs.uni.edu/heartland">https://bcs.uni.edu/heartland</a>
Institute for Decision Making	Cedar Falls, IA	319-273-6941	<a href="https://idm.uni.edu">https://idm.uni.edu</a>
Iowa Waste Reduction Center	Cedar Falls, IA	319-273-8905	<a href="https://iwrc.uni.edu">https://iwrc.uni.edu</a>
John Pappajohn Entrepreneurial Center	Cedar Falls, IA	319-273-5732	<a href="https://jpec.uni.edu">https://jpec.uni.edu</a>
Recycling and Reuse Technology Transfer	Cedar Falls, IA	319-273-3689	<a href="https://rrttc.com">https://rrttc.com</a>
Small Business Development Center	Cedar Falls, IA	319-273-4328	<a href="https://cbgi.uni.edu/sbdc">https://cbgi.uni.edu/sbdc</a>
Strategic Marketing Services	Cedar Falls, IA	319-273-2886	<a href="https://sms.uni.edu">https://sms.uni.edu</a>
Tallgrass Prairie Center	Cedar Falls, IA	319-273-3836	<a href="https://tallgrassprairiecenter.org">https://tallgrassprairiecenter.org</a>
UNI Metal Casting Center	Cedar Falls, IA	319-273-6894	<a href="https://mcc.uni.edu">https://mcc.uni.edu</a>
UNI Foundry 4.0 Center	Cedar Falls, IA	319-273-6894	<a href="https://mcc.uni.edu/foundry-4.0">https://mcc.uni.edu/foundry-4.0</a>

Source: UNI Business and Community Services

## UNI Carnegie Classification

### Classification:

Basic

Size and Setting

Enrollment Profile

Undergraduate Profile

Undergraduate Instructional Program

Graduate Instructional Program

### Category:

M1: Master's Colleges & Universities: Larger Programs

Four-year, medium, primarily residential

Very high undergraduate

Four-year, full-time, selective, higher transfer-in

Professions plus arts & sciences, some graduate coexistence

Postbaccalaureate: Comprehensive programs

### This institution participated in the following elective classification:

Community Engagement

Level

Control

Enrollment (Fall 2024)

Curricular Engagement and Outreach and Partnerships

4-year or above

Public

9,283

Source: *The Carnegie Classification of Institutions of Higher Education* - classification based on data from 2023 - 2024

Notes:

Graduate program classification: based on fewer than 50 degrees.

Undergraduate program classification: percentage is within 5 points of a category border (arts & sciences direction).

Apparent inconsistencies between basic and instructional program classifications are due to degree thresholds used in the basic classification.

## Iowa Economic Impact Profile

Item	Details
Discretionary Spending and Tourism	9,283 current students
Provide Higher Ed	<p>Approximately 90% of students are from Iowa</p> <p>Credit courses were offered in 99 counties and 609 cities and towns</p> <p>48 off-campus degree and certification programs were offered</p> <p>21,303 enrollment in Continuing and Distance Education Credit courses.</p> <p>11,670 non-credit educational activities</p>
Business Services and Community Impact	<p>Total number community service hours engaged in by UNI students is 503765 <b>(2023-2024)</b></p> <p>UNI provided service to clients in all 99 counties with a total of 4,126 unique business, community, non-profits and local government entities; another 44,852 individuals were engaged in the IA SourceLink.com entrepreneurial support system. BCS reached more than 251,000 Iowans through BCS programs and projects in the past year.</p> <p>Leveraged each \$1 invested by the state with \$5 in private grants, contracts, fees, or federal funding</p>

Source: Business & Community Services, Community Engagement, Continuing Education, and Office of the President





# PEER INSTITUTIONS



# PEER INSTITUTIONS



## Undergraduate Enrollment and Costs 2022 - 2023

Institution	Location	Student to		In State Tuition & Fees	Out of State Tuition & Fees
		UG	Faculty Ratio		
Central Connecticut State University	New Britain, CT	7,665	14	\$24,570	\$37,458
College of Charleston	Charleston, SC	9,972	16	\$25,964	\$48,784
Eastern Illinois University	Charleston, IL	6,916	15	\$23,913	\$26,340
Indiana State University	Terre Haute, IN	6,965	16	\$21,082	\$32,510
Minnesota State University-Mankato	Mankato, MN	12,676	21	\$20,050	\$29,420
The College of New Jersey	Ewing, NJ	7,039	13	\$32,122	\$44,916
University of Minnesota-Duluth	Duluth, MN	8,810	16	\$23,764	\$29,154
University of Northern Iowa	Cedar Falls, IA	7,735	17	\$18,754	\$29,908
University of Wisconsin-Eau Claire	Eau Claire, WI	9,423	19	\$17,928	\$26,641
University of Wisconsin-Whitewater	Whitewater, WI	9,367	19	\$15,754	\$24,929
Western Washington University	Bellingham, WA	13,800	17	\$23,658	\$41,564

Source: *Integrated Postsecondary Education Data System (IPEDS)*

UG - Fall 2022 undergraduate enrollment

The cost refers to the total dollar amount of living on campus thus including room and board for 2022 - 2023.

## Faculty by Rank 2023 - 2024

Institution	Location	Professor	Associate Professor	Assistant Professor
Central Connecticut State University	New Britain, CT	166	134	89
College of Charleston	Charleston, SC	150	175	118
Eastern Illinois University	Charleston, IL	147	58	54
Indiana State University	Terre Haute, IN	122	90	69
Minnesota State University-Mankato	Mankato, MN	186	139	146
The College of New Jersey	Ewing, NJ	156	123	67
University of Minnesota-Duluth	Duluth, MN	89	145	143
University of Northern Iowa	Cedar Falls, IA	116	144	70
University of Wisconsin-Eau Claire	Eau Claire, WI	139	93	109
University of Wisconsin-Whitewater	Whitewater, WI	104	167	75
Western Washington University	Bellingham, WA	238	194	111

Source: *Integrated Postsecondary Education Data System (IPEDS)*

2023 - 2024 Academic year full-time faculty on both 9/10 month and 11/12 month contract lengths

## Faculty Average Salaries by Rank 2023 - 2024

Institution	Location	Professor	Associate Professor	Assistant Professor	Instructor	All Ranks
Central Connecticut State University	New Britain, CT	\$122,985	\$98,531	\$77,973	\$69,296	\$103,995
College of Charleston	Charleston, SC	\$103,840	\$82,272	\$77,710	\$64,418	\$85,420
Eastern Illinois University	Charleston, IL	\$99,953	\$83,232	\$72,196	\$55,710	\$79,431
Indiana State University	Terre Haute, IN	\$100,933	\$80,215	\$70,877	\$55,583	\$77,956
Minnesota State University-Mankato	Mankato, MN	\$105,338	\$87,905	\$78,738	\$57,344	\$91,299
The College of New Jersey	Ewing, NJ	\$134,634	\$112,749	\$93,623	\$86,641	\$117,173
University of Minnesota-Duluth	Duluth, MN	\$105,398	\$83,365	\$71,043	\$56,617	\$78,872
University of Northern Iowa	Cedar Falls, IA	\$90,253	\$77,694	\$70,276	\$49,894	\$74,264
University of Wisconsin-Eau Claire	Eau Claire, WI	\$88,211	\$76,177	\$75,543	\$63,066	\$75,338
University of Wisconsin-Whitewater	Whitewater, WI	\$84,596	\$78,595	\$79,440	-	\$74,537
Western Washington University	Bellingham, WA	\$127,941	\$101,344	\$79,320	\$62,083	\$98,931

Source: *Integrated Postsecondary Education Data System (IPEDS)*

2023 - 2024 Academic year full-time faculty

## Undergraduates Receiving Student Financial Aid 2023- 2024

Institution	Location	Federal Grants**		State/Local Grants		Institutional Grants		Loans		Receiving any Financial Aid %
		N	\$	N	\$	N	\$	N	\$	
Central Connecticut State University	New Britain, CT	491	\$7,239	281	\$3,048	1,123	\$4,191	761	\$6,476	96%
College of Charleston	Charleston, SC	434	\$5,492	962	\$5,367	1,424	\$7,020	1,078	\$10,072	87%
Eastern Illinois University	Charleston, IL	477	\$5,285	498	\$5,922	783	\$4,988	533	\$6,105	97%
Indiana State University	Terre Haute, IN	768	\$5,475	673	\$6,389	1,102	\$6,165	880	\$6,214	95%
Minnesota State University-Mankato	Mankato, MN	537	\$5,551	683	\$3,587	986	\$3,235	1,300	\$10,191	88%
The College of New Jersey	Ewing, NJ	379	\$5,747	317	\$8,567	896	\$9,442	792	\$11,187	85%
University of Minnesota-Duluth	Duluth, MN	406	\$5,640	629	\$6,145	1,743	\$3,381	1,165	\$9,681	96%
University of Northern Iowa	Cedar Falls, IA	297	\$4,632	47	\$5,382	1,045	\$3,843	639	\$6,694	83%
University of Wisconsin-Eau Claire	Eau Claire, WI	476	\$4,367	391	\$2,399	938	\$1,921	1,058	\$7,395	78%
University of Wisconsin-Whitewater	Whitewater, WI	525	\$5,034	575	\$2,329	779	\$1,425	1,096	\$6,792	80%
Western Washington University	Bellingham, WA	1,021	\$3,842	956	\$5,580	2,809	\$3,996	1,040	\$7,171	95%

Source: *Integrated Postsecondary Education Data System (IPEDS)*

Full-time, first-time, degree/certificate-seeking undergraduate students receiving financial aid

\$ = Average amount of aid received



## Retention and Graduation Rates Fall 2023 and 2024

Institution	Location	Retention * %	Graduation Rates %
Central Connecticut State University	New Britain, CT	77	55
College of Charleston	Charleston, SC	80	67
Eastern Illinois University	Charleston, IL	71	51
Indiana State University	Terre Haute, IN	64	41
Minnesota State University-Mankato	Mankato, MN	76	51
The College of New Jersey	Ewing, NJ	90	87
University of Minnesota-Duluth	Duluth, MN	77	65
University of Northern Iowa	Cedar Falls, IA	83	69
University of Wisconsin-Eau Claire	Eau Claire, WI	80	68
University of Wisconsin-Whitewater	Whitewater, WI	74	63
Western Washington University	Bellingham, WA	77	68

Source: *Integrated Postsecondary Education Data System (IPEDS)*

\* Full-time retention rate 2023-2024 academic year

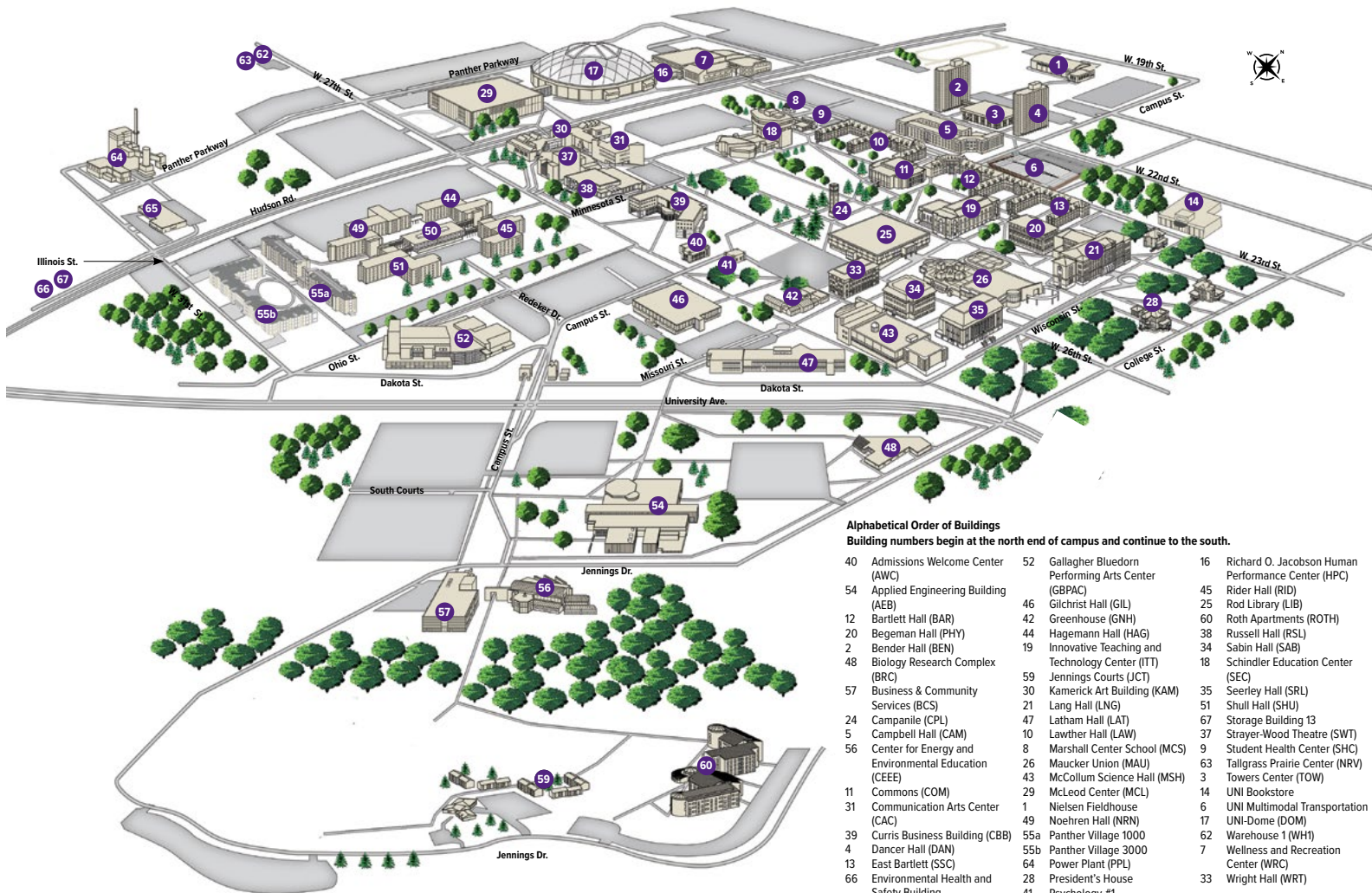
\* Graduation rates within 150% of normal time Fall 2023

## Degrees Granted in Academic Year 2022 - 2023

Institution	Location	Baccalaureate (Bachelor's)	Master's	Doctorates	Total
Central Connecticut State University	New Britain, CT	1,624	492	43	2,159
College of Charleston	Charleston, SC	2,028	238	0	2,266
Eastern Illinois University	Charleston, IL	1,106	629	0	1,735
Indiana State University	Terre Haute, IN	1,821	452	114	2,387
Minnesota State University-Mankato	Mankato, MN	2,556	603	38	3,197
The College of New Jersey	Ewing, NJ	1,721	391	0	2,112
University of Minnesota-Duluth	Duluth, MN	2,051	215	1	2,267
University of Northern Iowa	Cedar Falls, IA	1,934	495	9	2,438
University of Wisconsin-Eau Claire	Eau Claire, WI	2,127	177	28	2,332
University of Wisconsin-Whitewater	Whitewater, WI	2,054	582	13	2,649
Western Washington University	Bellingham, WA	3,323	307	5	3,635

Source: Integrated Postsecondary Education Data System (IPEDS)





# **Alphabetical Order of Buildings**

Building numbers begin at the north end of campus and continue to the south.

40	Admissions Welcome Center (AWC)	52	Gallagher Bluedorn Performing Arts Center (GBPAC)	16	Richard O. Jacobson Human Performance Center (HPC)
54	Applied Engineering Building (AEB)	46	Gilchrist Hall (GIL)	45	Rider Hall (RID)
12	Bartlett Hall (BAR)	42	Greenhouse (GNH)	25	Rod Library (LIB)
20	Begeman Hall (PHY)	44	Hagemann Hall (HAG)	60	Roth Apartments (ROTH)
2	Bender Hall (BEN)	19	Innovative Teaching and Technology Center (ITT)	38	Russell Hall (RSL)
48	Biology Research Complex (BRC)	59	Jennings Courts (JCT)	34	Sabin Hall (SAB)
57	Business & Community Services (BCS)	30	Kamerick Art Building (KAM)	18	Schindler Education Center (SEC)
24	Campanile (CPL)	21	Lang Hall (LNG)	35	Seerley Hall (SRL)
5	Campbell Hall (CAM)	47	Latham Hall (LAT)	51	Shull Hall (SHU)
56	Center for Energy and Environmental Education (CEE)	10	Lawther Hall (LAW)	67	Storage Building 13
11	Commons (COM)	8	Marshall Center School (MCS)	37	Strayer-Wood Theatre (SWT)
31	Communication Arts Center (CAC)	26	Mauker Union (MAU)	9	Student Health Center (SHC)
39	Curris Business Building (CBB)	43	McCollum Science Hall (MSH)	63	Tallgrass Prairie Center (NRV)
4	Dancer Hall (DAN)	29	McLeod Center (MCL)	3	Towers Center (TOW)
13	East Bartlett (SSC)	49	Nielsen Fieldhouse	14	UNI Bookstore
66	Environmental Health and Safety Building	41	Noehren Hall (NRN)	6	UNI Multimodal Transportation
65	Facilities Management (PHP)	55a	Panther Village 1000	17	UNI-Dome (DOM)
		55b	Panther Village 3000	62	Warehouse 1 (WH1)
		28	President's House	7	Wellness and Recreation Center (WRC)
		41	Psychology #1	33	Wright Hall (WRT)
		50	Redeker Center (RDC)		



**Institutional Effectiveness & Planning**

University of Northern Iowa, Cedar Falls, Iowa 50614-0005