



# 2013-2014 FACT BOOK

CIO's Office and Office of Institutional Research



*The University of Northern Iowa provides transformative learning experiences that inspire students to embrace challenge, engage in critical inquiry and creative thought, and contribute to society.*

## Quick Reference

<b>University President</b>	William N. Ruud	<b>Number of Financial Aid Awards</b>	39,109
<b>Board of Regents President</b>	Bruce L. Rastetter	<b>Fall 2013 Employees</b>	
<b>University Accreditation</b>	North Central Association of Colleges and Schools (NCA)	Full-Time	
<b>Number of Colleges</b>	4	Faculty and Institutional Officers	617
<b>Number of Academic Departments</b>	31	Professional and Scientific	555
<b>Enrollment 2013 (Fall Headcount)</b>		General Service Staff	508
Undergraduate	10,380	Part-Time	
Graduate	1,779	Faculty and Institutional Officers	37
Total	12,159	Professional and Scientific	54
		General Service Staff	48
<b>Enrollment 2013 (Fall FTE)</b>		Total	1,819
Undergraduate	9,343	<b>2013 Current Funds Revenues</b>	\$313,786,211
Graduate	1,273	<b>2012-13 Sponsored Funding Awarded</b>	\$41,181,950
Total	10,616	<b>Academic Year 2013-14 Tuition and Fees</b>	
<b>2012-13 Degrees Awarded</b>		Undergraduate Resident	\$7,685.00
Baccalaureate (Bachelor's)	2,349	Graduate Resident	\$8,793.00
Master's	483	Undergraduate Nonresident	\$17,181.00
Specialist	13	Graduate Nonresident	\$18,507.00
Doctorate	30	<b>Academic year 2013-14 Room &amp; Board</b>	\$7,820
Total	2,875	<b>Electronic Journals available in Library</b>	59,434
<b>Total Living Alumni</b>	109,062	Location	Cedar Falls, IA
<b>Student Financial Aid</b>	\$117,515,136	Homepage Address	<a href="http://www.uni.edu">http://www.uni.edu</a>
<b>Residence Hall Occupancy</b>	4,061	Office of Enrollment Services Phone Number.....	800-772-2037
		For an electronic version of the fact book, visit our Web site at <a href="http://www.ir.uni.edu/dbWeb/">http://www.ir.uni.edu/dbWeb/</a>	



# **FACT BOOK 2013-2014**

**CIO's Office and Office of Institutional Research**

**University of Northern Iowa  
Cedar Falls, IA 50614-0005**

## Table of Contents

Quick Reference.....	Inside front cover
Mission Statement.....	1
UNI Organizational Chart.....	2
UNI Administration.....	3
Definitions of Terms Used.....	4
Calendar.....	6

### **New Students**

Fall 2013 New Students.....	7
New Student Applications, Admissions, and Enrolled 2002-2013.....	8
New Students Enrolled by Residence 2002-2013.....	9
New Freshmen Enrollment by Residence 2007-2013.....	10
New Undergraduate Transfer Students by Type of Transfer College.....	11
New Freshmen ACT Composite Scores and High School Class Rank.....	12

### **Enrollment**

Fall 2013 Students Profile by College.....	13
Headcount Enrollment 2002-2013.....	14
Headcount Enrollment by Level.....	15
Undergraduate Enrollment by Age.....	16
Undergraduate Headcount by College: Fall 2009-2013.....	17
Fall 2013 Enrollment by Residence.....	18
Enrollment by Residence 2002-2013.....	19
Fall 2013 Enrollment by Race/Ethnicity.....	20
Minority Student Enrollment 2002-2013.....	21

### **Enrollment (continued)**

Fall On-Campus Headcount & FTE Enrollment by Level 2002-2013.....	22
First Major Only by College and Level: Fall 2008-2013.....	23
Annual Degrees Awarded by Level 2003-2013.....	24
Degrees Granted by College 2011-12 and 2012-2013.....	25
Undergraduate Retention and Graduation Rates.....	26
Continuing Education Credit Enrollment Trends 2003-2013.....	27
Continuing Education Courses Offered 2002-2013.....	28
Web-based Learning Management System (LMS) 2008-2013.....	29
Fall Semester Residence Hall Occupancy by Gender and Level 2002-2013.....	30

### **Alumni**

Total Living Alumni by College 2009-2013.....	31
Total Living Alumni by College.....	32
Alumni by State 2013.....	33
Alumni by Iowa County 2013.....	34
Post-Graduation Status of 2011-2013 Bachelors Degree Recipients.....	35
Post-Graduation Status of 2011-2013 Graduate Degree Recipients.....	36
Undergraduate Plans for Further Education 2012-2013.....	37
Graduate Plans for Further Education 2012-2013.....	38

## Table of Contents (continued)

### Faculty and Staff

Fall 2013 Faculty Profile by College.....	39
Faculty by College 2008-2013.....	40
Faculty by College and Gender 2008-2013.....	41
Faculty by Tenure Status 2002-2013.....	42
Faculty Tenure Status by Gender 2002-2013.....	43
Fall 2013 Faculty by Tenure Status and Minority.....	44
Faculty by Rank and Tenure Status 2002-2013.....	45
Faculty by College and Tenure Status 2008-2013.....	46
Faculty by College, Gender and Tenure Status 2009-2013.....	47
Faculty by College and Rank 2008-2013.....	49
Faculty by College, Gender and Rank 2009-2013.....	50
Minority Faculty by Race/Ethnicity 2004-2013.....	52
UNI Workforce by Employment Categories 2003-2013.....	53
UNI Workforce Headcount & FTE by Employment Categories & College.....	54
UNI Temporary Workforce Headcount and FTE by Employment Categories.....	55
UNI Workforce by Race/Ethnicity 2007-2013.....	56
UNI Workforce by Employment Categories and Race/Ethnicity Fall 2013.....	57
UNI Workforce Headcount & FTE by Employment Categories & College.....	58
UNI Workforce by Employment Categories, Gender and College Fall 2013.....	59
UNI Workforce by Employment Categories, Level and College Fall 2013.....	60
UNI Workforce by Employment Categories, Level and Gender Fall 2013.....	61

### Budget and Finance

Statement of Revenues, Expenses, and Changes In Net Assets 2008-2013.....	62
Financial Aid Programs by Source of Aid 2007-2013.....	64
Student Financial Aid Programs 2010-2013.....	65
Full-Time Undergraduate Student Tuition and Fees 1994-2013.....	66
Full-Time Graduate Student Tuition and Fees 1994-2013.....	67
Sponsored Project Proposals and Awards 2001-2013.....	68

### Library

Library Statistics: 2008-2013.....	69
------------------------------------	----

### General Information

International Students by Country: Fall 2013.....	71
International Students by College 2007-2013.....	72
Top 5 Countries of Origin for International Students 2002-2013.....	73
Study Abroad Destinations: 2012-2013.....	74
UNI Study Abroad Students by College and Classification: 2012-2013.....	75
UNI Study Abroad Students by Term.....	76
UNI Study Abroad Top Ten Countries.....	77
Incoming International Exchange Students by Country: 2012-2013.....	78
UNI Students Studying Abroad by Region.....	79
Top 5 Countries for UNI Study Abroad Students FY 2001-FY 2013.....	80
UNI Services to Businesses, Communities and Local Government.....	81
UNI Carnegie Classification.....	82
Iowa Economic Impact Profile.....	83

### Peer Institutions

Undergraduate Enrollment and Costs 2011-2012.....	84
Faculty by Rank 2011-2012.....	85
Faculty Average Salaries by Rank 2011-2012.....	86
Undergraduates Receiving Student Financial Aid: 2010-2011.....	87
Retention and Graduation Rates Fall 2011.....	88
Degrees Granted in Academic Year 2011-2012.....	89

Campus Map.....	Inside back cover
-----------------	-------------------





# FACT BOOK

# 2013-2014

**CIO's Office and Office of Institutional Research**

**Student Contributor:  
Eddie Broderick**

**Graphic and Publication Support:  
Office of University Relations**

**Phone. 319-273-3050**

**Fax: 319-273-3010**

**Email: [ciosoffice@uni.edu](mailto:ciosoffice@uni.edu)**

# Mission Statement

## Institutional Mission

The University of Northern Iowa provides transformative learning experiences that inspire students to embrace challenge, engage in critical inquiry and creative thought and contribute to society.

## Vision Statement

The University of Northern Iowa will be nationally known for innovative education, preparing students for success in a rapidly changing, globally competitive, and culturally diverse world.

## Values

As a university community we are guided by the following core values:

**Academic Freedom** – freedom of inquiry by students, faculty, and staff

**Access**– an affordable, inclusive educational environment

## Values (Continued)

**Accountability** – integrity, responsibility and the highest ethical standards of students, faculty and staff

**Community**– an ethical, caring, and safe community characterized by civility

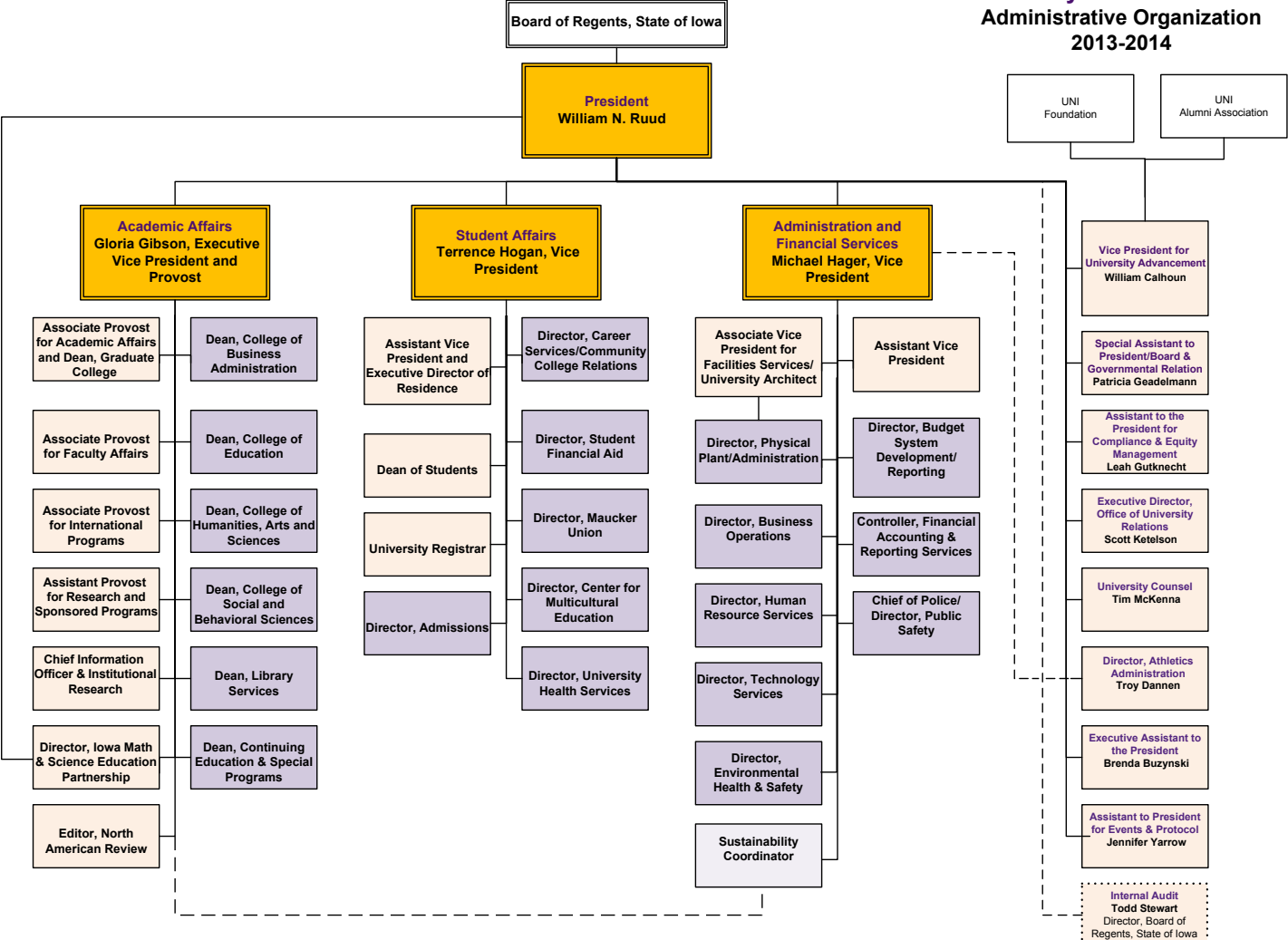
**Diversity** – a welcoming community that celebrates pluralism, multiculturalism, and the unique contributions of each person and group

**Engagement** – characterized by challenge, transformation, and lifelong learning in a global society

**Excellence** – in teaching and learning, scholarship and creative work, and service

**Sustainability** – an attractive, well-maintained campus environment that enhances the living and learning experience with an emphasis on environmental stewardship

**University of Northern Iowa  
Administrative Organization  
2013-2014**





# UNI Administration

**PRESIDENT**..... Dr. William N. Ruud

**EXECUTIVE VICE PRESIDENT and PROVOST**.....Dr. Gloria Gibson

## **VICE PRESIDENTS**

Vice President for Student Affairs.....Dr. Terrence Hogan

Vice President for Administration and Financial Services..... Mr. Michael Hager

## **SPECIAL ASSISTANTS to PRESIDENT**

Special Assistant Board & Government Relations.....Dr. Patricia L. Gadelmann

Vice President for University Advancement & President of the UNI Foundations.....Mr. William Calhoun

**CHIEF INFORMATION OFFICER**.....Dr. Shashi Kaparthy

**DIRECTOR OF UNIVERSITY RELATIONS**.....Mr. Scott Ketelsen

## **ASSOCIATE and ASSISTANT PROVOSTS**

Associate Provost for Academic Affairs.....Dr. Michael Licari

Associate Provost for Faculty Affairs..... Dr. Nancy Lippens

Assistant Provost for Sponsored Programs.....Ms. Christine Twait

Assistant Provost for International Programs..... Dr. Craig Klafter

## **DEANS**

College of Business Administration.....Dr. Farzad Moussavi

College of Education..... Dr. Dwight Watson

College of Humanities, Arts and Sciences..... Dr. Joel Haack

College of Social and Behavioral Sciences.....Dr. Brenda Bass (Interim)

Continuing Education and Special Programs.....Dr. Kent Johnson

Graduate College.....Dr. Michael Licari

Library.....Mr. Christopher Cox

## Definitions of Terms Used

### ENROLLMENTS

**Headcount:** The count of each student enrolled for one or more courses taken in a semester following the second week of the semester's start.

**Full-Time Student:** An undergraduate student enrolled for 12 or more credit hours per semester and a graduate student enrolled for 9 or more credit hours per semester.

**FTE (Full-Time Equivalent):** An enrollment unit used to represent a student enrolled for a full course of study. It is calculated by dividing total credit hours generated by 15.0 for undergraduate students and by 9 for graduate students for a semester FTE.

**Unclassified/Undeclared Student:** A student who has enrolled in instructional courses but has not been officially accepted into one of the institution's authorized degree programs.

**Freshman:** A first-year undergraduate student.

**First-Time First-Year Student:** A student attending any institution for the first-time at the undergraduate level. Includes students enrolled in the fall term who attended college for the first time in the prior summer term. Also includes students who entered with advanced standing (college credits earned before graduate from high school).

**First-Time Student:** A student attending any institution for the first time at the level enrolled. Includes students enrolled in the fall term who attended a postsecondary institution for the first time at the same level in the prior summer term. Also includes students who entered with advanced standing (college credit earned before graduation from high school).

**Graduation Rate:** Rate required for disclosure and/or reporting purposes under Student Right-to-Know. Calculated as the total number of completers within 150 percent of normal time divided by the revised cohort minus any allowable exclusions.

### FACULTY AND STAFF

**Faculty (Instruction/Research/Public Service):** Persons whose specific assignments customarily are made for the purpose of conducting instruction, research, or public service as a principle activity (or activities), and who hold academic rank titles of professor, associate professor, assistant professor, instructor, lecturer or the equivalent of any of these academic ranks. This category excludes president, vice presidents, and deans. Also excluded are faculty on leave without pay.

**Executive, Administrative and Managerial:** Persons whose assignments require primary (and major) responsibility for management of the institution, or a customarily recognized department or subdivision, thereof. Assignments require the performance of work directly related to management policies or general business operations of the institution, department or subdivision. It is assumed that assignments in this category customarily and regularly require the incumbent to exercise discretion and independent judgment, and to direct the work of others. Included in this category are all officers holding titles such as president, vice president, dean, director or the equivalent, as well as officers subordinated to any of these administrators with such titles as associate dean, assistant dean, executive officer of academic departments (department heads, or the equivalent) if their principal activity is administrative.

## Definitions of Terms Used

### **BUDGET AND FINANCE**

**Current Funds Expenditures (and Transfers):** The costs incurred for goods and services used in the conduct of the institution's operations. Includes the acquisition cost of capital assets, such as equipment and library books, to the extent current funds are budgeted for and used by operating departments for such purposes.

**Current Funds Revenues:** Unrestricted gifts, grants and other resources earned during the reporting period and restricted resources to the extent that such funds were expended for current operating purposes. Excludes restricted current funds received, but not expended because these revenues have not been earned.

### **Academic Support (Expenditures) for Public Institutions:**

Expenditures for the support services that are an integral part of the public institution's primary mission of instruction, research or public service. Includes expenditures for libraries, museums, galleries, audiovisual services, academic computing support, ancillary support, academic administration, personnel development and course and curriculum development. Academic support expenditures for public institutions are measured differently than academic support expenses for private institutions because private institutions' academic support expenses include depreciation costs and interest costs in amounts associated with this function. In addition, private institutions exclude amounts of capital expenditures associated with the academic support function. Finally, operations and maintenance expenses associated with the academic support function are included in the amounts reported by private institutions but are reported separately by public institutions.

### **Auxiliary Enterprises (Expenditures) for public Institutions:**

Expenditures for essentially self-supporting operations of the institution that exist to furnish a service to students, faculty or staff, and that charge a fee that is directly related to, although not necessarily equal to, the cost of the service. Includes mandatory and nonmandatory transfers. Examples are residence halls, food services, student health services, athletics, UNI-Dome and performing arts center. Auxiliary enterprise expenditures are measured differently for public and private institutions. Public institutions include capital expenditure amounts associated with auxiliary enterprise expenditures, but do not include depreciation, interest and operations and maintenance expenses. These amounts are included in private institutions' expenses of auxiliary enterprises.

### **OTHER**

**IPEDS:** The Integrated Postsecondary Education Data System conducted by National Center for Education Statistics (NCES). IPEDS began in 1986 and involves annual data collections. Survey data are required from all postsecondary institutions that have a Program Participation Agreement (PPA) with the Office of Postsecondary Education, U.S. Department of Education. IPEDS also requests limited data from approximately 3,000 other schools offering postsecondary education programs.

**NCA:** North Central Association of Colleges and Schools

## CALENDAR

### Semester/Date

#### Fall 2013

Monday, August 26  
 Monday, September 2  
 Friday, October 18  
 Monday, October 21  
 Monday - Friday, November 25 - 29  
 Thursday - Friday, November 28 - 29  
 Monday - Friday, December 16 - 20  
 Saturday, December 21  
 Tuesday & Wednesday, December 24 & 25

#### Spring 2014

Monday, January 2  
 Monday, January 13  
 Monday, January 20  
 Friday, February 28  
 Monday, March 3  
 Monday - Friday, March 17 - 21  
 Monday - Friday, May 5 - 9  
 Saturday, May 10

#### Summer 2014

Monday, May 12  
 Monday, May 12  
 Monday, May 26  
 Friday, June 6  
 Monday, June 9  
 Monday, June 9  
 Friday, June 20  
 Monday, June 23  
 Thursday, July 3  
 Friday, July 4  
 Monday, July 7  
 Friday, August 1

### Event

Semester begins  
 University holiday  
 First half ends  
 Second half begins  
 Thanksgiving break  
 University holiday  
 Final exam week  
 Commencement  
 University holiday

University holiday  
 Semester begins  
 University holiday  
 First half ends  
 Second half begins  
 Spring break  
 Final exam week  
 Commencement

First 4 wk session begins  
 First 6 wk session begins  
 University holiday  
 First 4 wk session ends  
 Second 4 wk session begins  
 8 wk session begins  
 First 6 wk session ends  
 Second 6 wk session begins  
 Second 4 wk session ends  
 University holiday  
 Third 4 wk session begins  
 All sessions end

### Semester/Date

#### Fall 2014

Monday, August 22  
 Monday, September 1  
 Friday, October 17  
 Monday, October 20  
 Monday - Friday, November 24 - 28  
 Thursday - Friday, November 27 - 28  
 Monday - Friday, December 15 - 19  
 Saturday, December 20  
 Wednesday & Thursday, December 24 & 25

#### Spring 2015

Friday, January 2  
 Monday, January 12  
 Monday, January 19  
 Friday, March 6  
 Monday, March 9  
 Monday - Friday, March 16 - 20  
 Monday - Friday, May 4 - 8  
 Saturday, May 9

#### Summer 2015

Monday, May 11  
 Monday, May 11  
 Monday, May 25  
 Friday, June 5  
 Monday, June 8  
 Monday, June 8  
 Friday, June 19  
 Monday, June 22  
 Thursday, July 2  
 Friday, July 3  
 Monday, July 6  
 Friday, July 31



# New Students

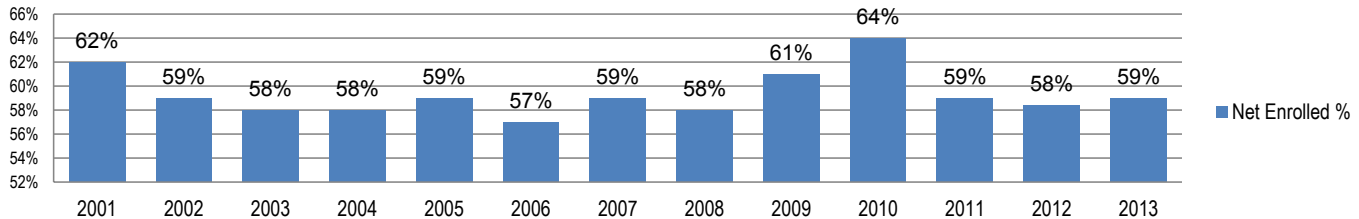


# New Students

## Fall 2013 New Students\*

	Applications		Admissions		**Net Enrolled		NET ENROLLED					
							Resident		Non-Resident		International	
	N	%	N	%	N	%	N	%	N	%	N	%
<b>TOTAL</b>	<b>7,093</b>		<b>5,161</b>		<b>3,314</b>		<b>2,927</b>		<b>283</b>		<b>104</b>	
Percent			72.8		46.7		88.3		8.5		3.1	
<b>Undergraduate</b>												
New Freshmen	4,068	70.4	3,389	75.3	1,722	65.4	1,568	66.0	132	72.5	22	28.9
Transfers	1,711	29.6	1,113	24.7	912	34.6	808	34.0	50	27.5	54	71.1
<b>Total</b>	<b>5,779</b>		<b>4,502</b>		<b>2,634</b>		<b>2,376</b>		<b>182</b>		<b>76</b>	
Percent			77.9		58.5		90.2		6.9		2.9	
<b>Graduate</b>												
Students	<b>1,314</b>		<b>659</b>		<b>680</b>		<b>551</b>		<b>101</b>		<b>28</b>	
Percent			50.2		103.2		81.0		14.9		4.1	

**Net Enrolled % of Admitted**

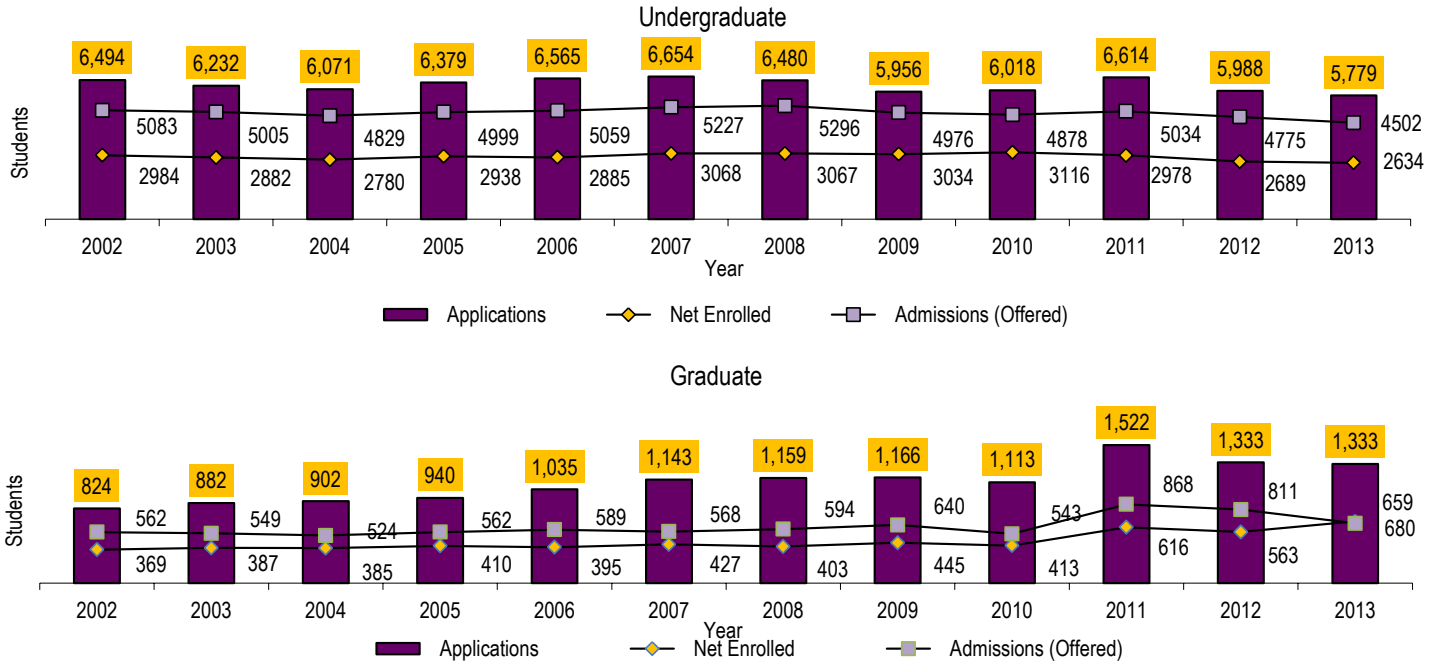


Source: CIO's Office and Institutional Research and Office of the Registrar

\*The Undergraduate data does not reflect unclassified new students.

\*\*Enrolled as % of applied

## New Student Applications, Admissions and Enrolled Fall Semester 2002-2013



Source: Office of the Registrar



## New Students Enrolled By Residence 2002-2013

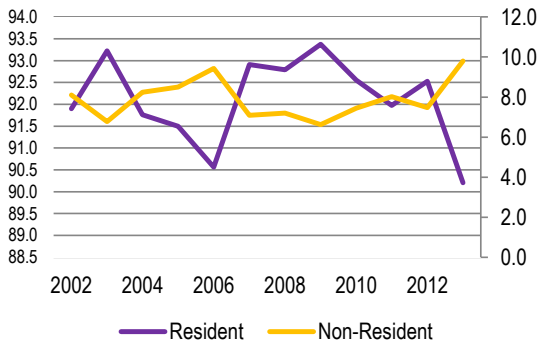
### UNDERGRADUATE\*

	Resident	Non-Resident	International Student
2002	2,848	164	87
2003	2,780	105	97
2004	2,640	151	86
2005	2,766	149	108
2006	2,688	152	128
2007	2,937	191	33
2008	2,846	178	43
2009	2,834	146	55
2010	2,884	158	74
2011	2,739	177	62
2012	2,488	156	45
2013	2,376	182	76

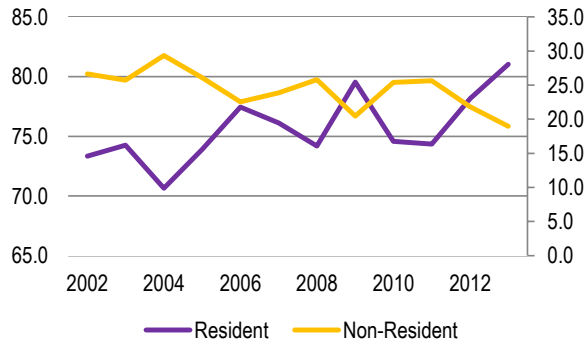
### GRADUATE

	Resident	Non-Resident	International Student		
				<b>Total</b>	<b>Annual Percent Change</b>
2002	264	43	53	3,459	-10.9
2003	277	42	54	3,355	-3.0
2004	272	57	56	3,262	-2.8
2005	303	43	64	3,433	5.2
2006	299	44	43	3,354	-2.3
2007	325	33	69	3,588	7.0
2008	299	51	53	3,470	-3.3
2009	354	50	41	3,480	0.3
2010	308	55	50	3,529	1.4
2011	458	121	37	3,594	1.8
2012	440	81	42	3,252	-9.5
2013	551	101	28	3,314	1.9

**Undergraduate New Student %**



**Graduate New Student %**



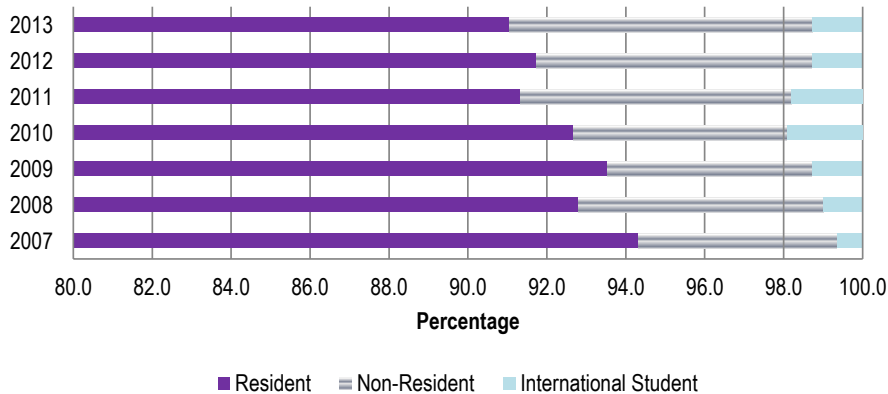
Source: Office of the Registrar

\*New undergraduate students are only new freshmen and new transfers.

## New Freshmen Enrollment by Residence 2007-2013

	2007		2008		2009		2010		2011		2012		2013	
	N	%	N	%	N	%	N	%	N	%	N	%	N	%
<b>New Freshmen</b>	<b>1,991</b>		<b>2,015</b>		<b>1,946</b>		<b>1,978</b>		<b>1,937</b>		<b>1,704</b>		<b>1,722</b>	
Annual Percent Change		12.6		1.2		-3.4		1.6		-2.1		-12.0		1.1
Resident	1,878	94.3	1,870	92.8	1,820	93.5	1,833	92.7	1,769	91.3	1,563	91.7	1,568	91.1
Non-Resident	100	5.0	125	6.2	101	5.2	107	5.4	133	6.9	119	7.0	132	7.7
International Student	13	0.7	20	1.0	25	1.3	38	1.9	35	1.8	22	1.3	22	1.3

**New Freshmen Enrollment by Residence**

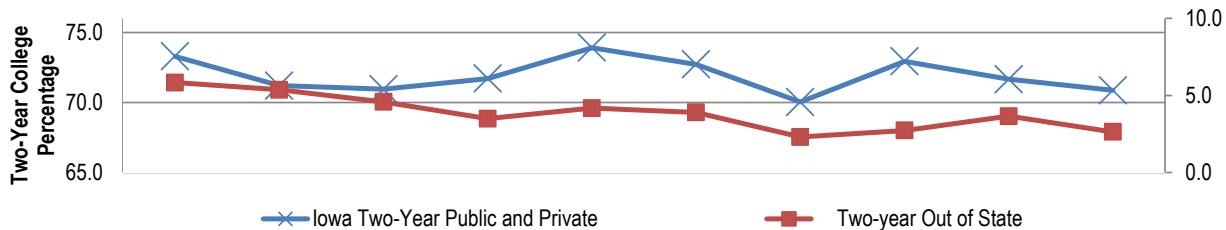


Source: Office of the Registrar

## New Undergraduate Transfer Students by Type of Transfer College

	2003	2004	2005	2006	2007	2008	2009	2010	2011	2012	2013
<b>TOTAL</b>	<b>1,097</b>	<b>1,080</b>	<b>1,201</b>	<b>1,117</b>	<b>1,077</b>	<b>1,052</b>	<b>1,088</b>	<b>1,138</b>	<b>1,041</b>	<b>985</b>	<b>904</b>
Annual Percent Change	-2.0	-1.5	11.2	-7.0	-3.6	-2.3	3.4	4.6	-8.5	-5.4	-8.2
Iowa Two-Year Public and Private	804	769	852	801	796	765	762	830	746	698	581
Iowa Area Community Colleges	786	757	835	798	789	757	762	828	746	698	580
Iowa Two-Year Private	18	12	17	3	7	8	0	2	0	0	1
Iowa Four-Year Public and Private	162	167	203	197	165	171	186	183	174	181	173
Iowa Four-Year Public											
Iowa State University	43	45	35	26	30	23	32	32	32	21	25
University of Iowa	40	35	41	57	48	46	42	51	51	35	30
University of Northern Iowa*										25	40
Subtotal	83	80	76	83	78	69	74	83	83	81	95
Iowa Four-Year Private	79	87	127	114	87	102	112	100	91	100	78
Non-Iowa (US) Total	131	144	146	119	116	116	140	125	121	106	150
Two-year Out of State	64	58	55	39	45	41	25	31	38	26	38
Four-year Out of State	67	86	91	80	71	75	115	94	83	80	104

**Two-Year New Undergraduate Transfer Students**



Source: CIO's Office and Institutional Research

\*Students transferring from UNI are returning UNI students pursuing a second BA or teacher license

## New Freshmen ACT Composite Scores and High School Class Rank

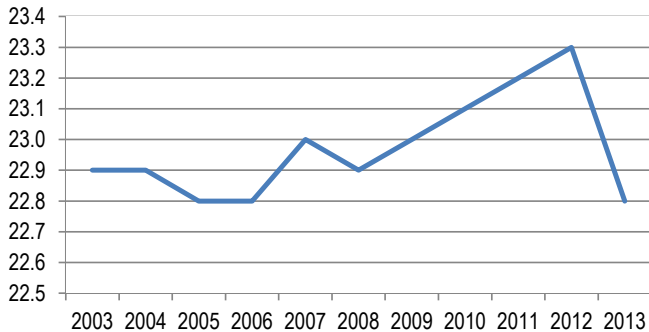
**ACT Composite Scores**

	ACT Composite Scores		
	Mean	75 <sup>th</sup> Percentile	25 <sup>th</sup> Percentile
2003	22.9	25.0	20.0
2004	22.9	25.1	20.0
2005	22.8	25.1	20.0
2006	22.8	25.8	21.0
2007	23.0	25.7	20.9
2008	22.9	25.7	20.9
2009	23.0	25.9	21.1
2010	23.1	25.0	21.1
2011	23.2	25.0	21.0
2012	23.3	25.0	21.0
2013	22.8	24.0	20.0

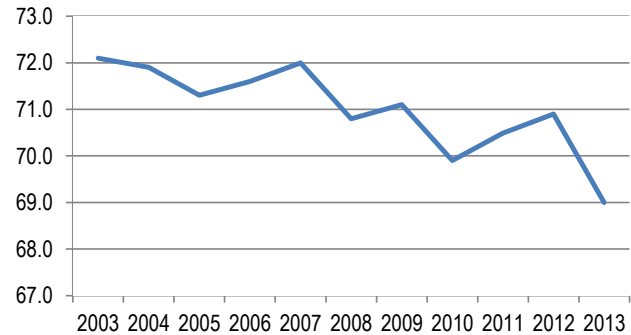
**High School Rank**

	High School Rank			
	Mean	Percent in Upper 10%	Percent in Upper 20%	Percent in Upper 50%
2003	72.1	19.1	38.6	89.4
2004	71.9	19.1	38.5	89.7
2005	71.3	19.0	39.1	89.5
2006	71.6	18.2	37.6	88.7
2007	72.0	19.0	38.9	88.5
2008	70.8	18.6	37.6	85.3
2009	71.1	18.9	40.1	85.3
2010	69.9	17.6	36.2	84.0
2011	70.5	19.1	37.2	84.1
2012	70.9	20.0	38.9	84.6
2013	69.0	18.1	37.1	81.6

**ACT Mean Composite Score**



**High School Mean Rank**



Source: CIO's Office and Institutional Research



# Enrollment



**Enrollment**

## Fall 2013 Students Profile by College

	Total University	Business	Education	Humanities, Arts & Sciences^	S&B Sciences	No Specific College
<b>TOTAL</b>	<b>12,159</b>	<b>2,088</b>	<b>2,791</b>	<b>3,916</b>	<b>2,026</b>	<b>1,338</b>
Percent	100	17	23	32	17	11
Full-Time	9,968	1,862	2,206	3,405	1,778	717
Part-Time	2,191	226	585	511	248	621
Female	7,129	818	2,021	2,108	1,255	927
Male	5,030	1,270	770	1,808	771	411
Freshman	2,037	375	376	633	250	403
Sophomore	1,902	386	376	663	330	147
Junior	2,662	579	568	914	544	57
Senior	3,569	662	868	1,289	656	94
Unclassified	210	0	0	0	0	210
Graduate	1,779	86	603	417	246	427
<b>International Students:</b>						
Undergraduate	391	166	14	115	18	78
Graduate	129	26	44	37	14	8
<b>1<sup>st</sup> Majors:</b>						
Undergraduate	10,380	2,002	2,188	3,499	1,780	911
Graduate	1,779	86	603	417	246	427
<b>2012-2013 Degrees Granted:</b>						
Baccalaureate (Bachelor's)	2,349	473	543	785	493	55
Master's	483	48	172	170	92	1
Specialists	13		13			
Doctorates	30		26	4		

Source: Office of the Registrar

^Effective July 2011, the merge of College of Humanities and Fine Arts and College of Natural Sciences to College of Humanities, Arts and Sciences

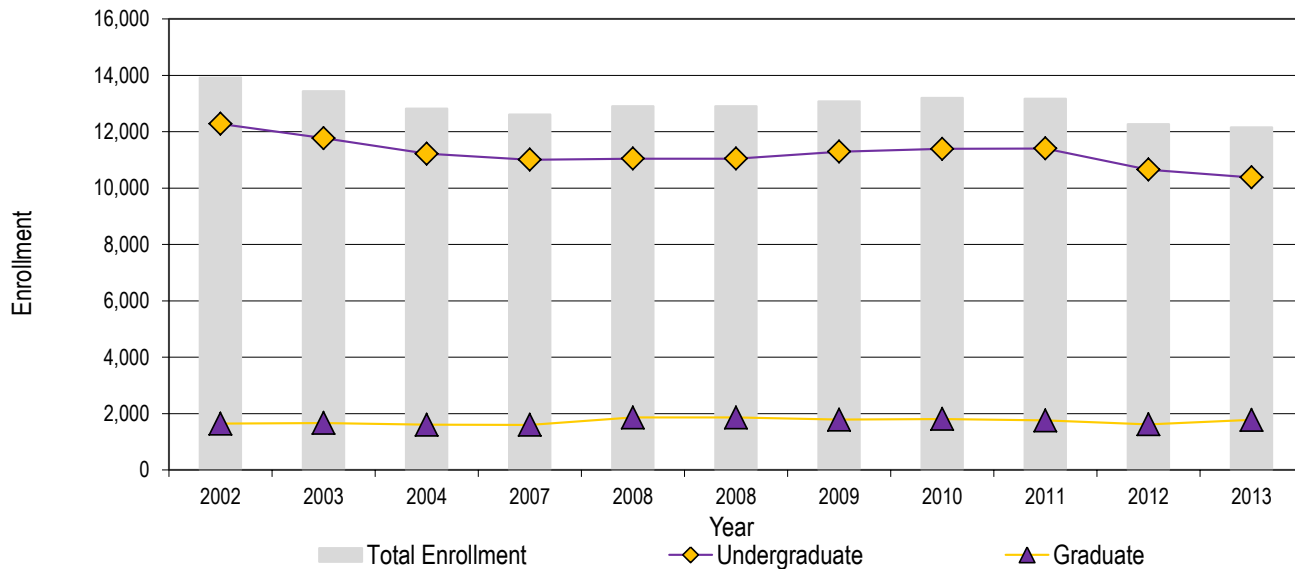
## Headcount Enrollment 2002-2013

	UNDERGRADUATE		GRADUATE		Total	Annual Percent Change
	Full-Time	Part-Time	Full-Time	Part-Time		
<b>2002</b>	10,939	1,343	550	1,094	<b>13,926</b>	-1.0
<b>2003</b>	10,510	1,264	566	1,101	<b>13,441</b>	-3.5
<b>2004</b>	9,987	1,233	678	926	<b>12,824</b>	-4.6
<b>2005</b>	9,782	1,170	681	880	<b>12,513</b>	-2.4
<b>2006</b>	9,606	1,096	690	868	<b>12,260</b>	-2.0
<b>2007</b>	9,888	1,122	692	907	<b>12,609</b>	2.8
<b>2008</b>	10,028	1,019	731	1,130	<b>12,908</b>	2.4
<b>2009</b>	10,279	1,015	781	1,005	<b>13,080</b>	1.3
<b>2010</b>	10,378	1,013	770	1,040	<b>13,201</b>	0.9
<b>2011</b>	10,209	1,199	742	1,018	<b>13,168</b>	-0.2
<b>2012</b>	9,679	976	682	936	<b>12,273</b>	-6.8
<b>2013</b>	9,330	1,050	638	1,141	<b>12,159</b>	-0.9

Source: Office of the Registrar



## Headcount Enrollment by Level 2002-2013\*



Source: Office of the Registrar

\*Includes Full-Time and Part-Time Students

## Undergraduate Enrollment by Age 2003-2013

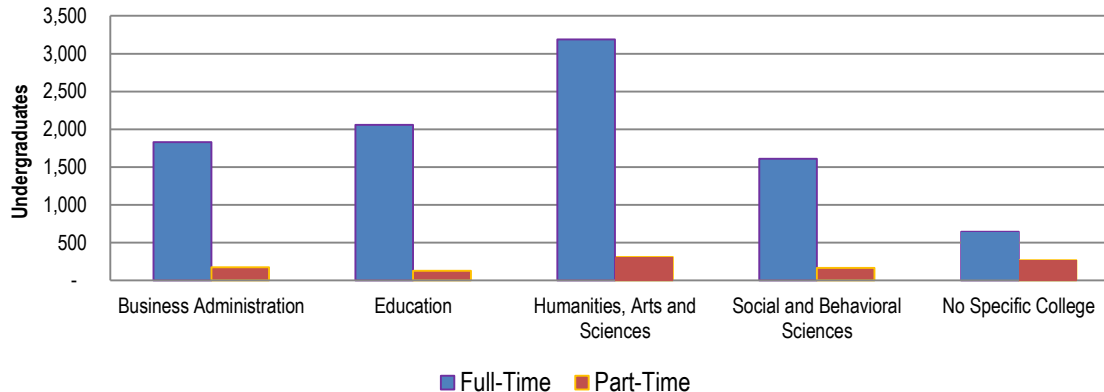
Fall Semester	2003	2004	2005	2006	2007	2008	2009	2010	2011	2012	2013
<b>Total Enrollment</b>	<b>11,774</b>	<b>11,220</b>	<b>10,952</b>	<b>10,702</b>	<b>11,010</b>	<b>11,047</b>	<b>11,294</b>	<b>11,391</b>	<b>11,408</b>	<b>10,655</b>	<b>10,380</b>
Under 18	52	106	108	106	113	91	94	102	49	21	64
18	1,004	1,435	1,463	1,526	1,729	1,758	1,708	1,733	1,165	1,001	992
19	1,734	1,712	1,669	1,699	1,756	1,950	1,915	1,909	1,879	1,779	1682
20	2,053	1,964	2,062	1,974	1,986	2,013	2,254	2,201	2,072	2,008	1908
21	2,461	2,338	2,067	2,120	2,114	2,045	2,054	2,300	2,227	2,158	2098
22	1,978	1,682	1,584	1,353	1,417	1,383	1,330	1,322	1,729	1,611	1598
23	980	665	677	686	596	579	577	527	855	776	771
24	361	290	289	312	312	258	292	264	309	352	309
25	192	184	194	165	191	184	174	197	200	158	178
26	145	118	121	120	129	126	139	137	152	118	117
27	104	100	92	77	90	88	98	91	118	89	87
28	79	77	78	73	69	74	91	69	82	86	60
29	60	51	58	58	66	57	69	71	61	62	55
30-39	341	290	294	263	268	256	310	301	325	293	307
40-49	159	148	138	116	120	120	127	104	134	101	96
50-64	68	59	55	51	49	61	60	61	48	41	57
65 and older	3	1	3	3	5	4	2	2	3	1	1

Source: Office of the Registrar

## Undergraduate Headcount by College: Fall 2009 - 2013

	Full-Time					Part-Time				
	2009	2010	2011	2012	2013	2009	2010	2011	2012	2013
<b>Total University</b>	<b>10,279</b>	<b>10,378</b>	<b>10,209</b>	<b>9,679</b>	<b>9,330</b>	<b>1,015</b>	<b>1,013</b>	<b>1,198</b>	<b>976</b>	<b>1,050</b>
Business Administration	2,152	2,136	1,957	1,856	1,828	198	188	228	182	174
Education	2,150	2,241	2,186	2,058	2,058	146	140	182	121	130
Humanities, Arts and Sciences	-	-	3,481	3,371	3,189	-	-	365	328	310
Social and Behavioral Sciences	1,684	1,710	1,753	1,706	1,612	119	153	168	153	168
No Specific College	867	849	832	688	643	284	276	255	192	268

### Fall 2013 Undergraduates by College



## Fall 2013 Enrollment by Residence

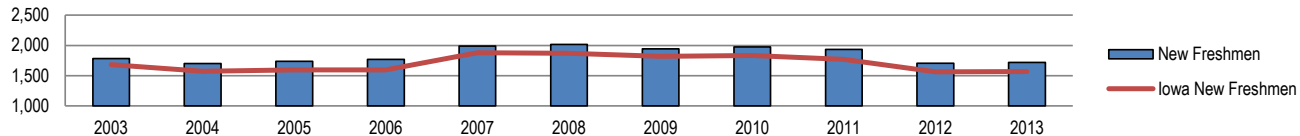
	Iowa Resident		U.S. Non-Iowa Resident		International Student		TOTAL
	N	%	N	%	N	%	N
<b>Enrollment</b>	<b>10,842</b>	89.2	<b>797</b>	6.6	<b>520</b>	4.3	<b>12,159</b>
New Freshmen	1,568	91.1	132	7.7	22	1.3	1,722
Undergraduate	9,411	90.7	578	5.6	391	3.8	10,380
New Graduate	551	81.0	101	14.9	28	4.1	680
Graduate	1,431	80.4	219	12.3	129	7.3	1,779

Source: Office of the Registrar

## Enrollment by Residence 2003-2013

	2003	2004	2005	2006	2007	2008	2009	2010	2011	2012	2013	5 Yr % Change	10 Yr % Change
<b>Fall Semester Enrollment</b>	<b>13,441</b>	<b>12,824</b>	<b>12,513</b>	<b>12,260</b>	<b>12,609</b>	<b>12,908</b>	<b>13,080</b>	<b>13,201</b>	<b>13,168</b>	<b>12,273</b>	<b>12,159</b>	-7.0	-9.5
Iowa Resident	12,356	11,793	11,400	11,129	11,444	11,562	11,896	11,978	11,915	11,095	10,842	-8.9	-12.3
U.S., Non-Iowa Resident	701	680	691	699	693	882	731	743	765	724	797	9.0	13.7
International Student	384	351	422	432	472	464	453	480	488	454	520	14.8	35.4
<b>New Freshmen</b>	<b>1,785</b>	<b>1,700</b>	<b>1,737</b>	<b>1,768</b>	<b>1,991</b>	<b>2,015</b>	<b>1,946</b>	<b>1,978</b>	<b>1,937</b>	<b>1,704</b>	<b>1,722</b>	-11.5	-3.5
Iowa Resident	1,683	1,573	1,598	1,594	1,878	1,870	1,820	1,833	1,769	1,563	1,568	-13.8	-6.8
U.S., Non-Iowa Resident	88	105	124	139	100	125	101	107	133	119	132	30.7	50.0
International Student	14	22	15	35	13	20	25	38	35	22	22	-12.0	57.1
<b>Undergraduate</b>	<b>11,774</b>	<b>11,220</b>	<b>10,952</b>	<b>10,702</b>	<b>11,010</b>	<b>11,047</b>	<b>11,294</b>	<b>11,391</b>	<b>11,408</b>	<b>10,655</b>	<b>10,380</b>	-8.1	-11.8
Iowa Resident	11,061	10,516	10,185	9,907	10,157	10,185	10,469	10,532	10,522	9,806	9,411	-10.1	-14.9
U.S., Non-Iowa Resident	507	516	537	542	555	598	541	526	541	530	578	6.8	14.0
International Student	206	188	230	253	298	264	284	333	345	319	391	37.7	89.8
<b>Graduate</b>	<b>1,667</b>	<b>1,604</b>	<b>1,561</b>	<b>1,558</b>	<b>1,599</b>	<b>1,861</b>	<b>1,786</b>	<b>1,810</b>	<b>1,760</b>	<b>1,618</b>	<b>1,779</b>	-0.4	6.7
Iowa Resident	1,295	1,277	1,215	1,222	1,287	1,377	1,427	1,446	1,393	1,289	1,431	0.3	10.5
U.S., Non-Iowa Resident	194	164	154	157	138	284	190	217	224	194	219	15.3	12.9
International Student	178	163	192	179	174	200	169	147	143	135	129	-23.7	-27.5

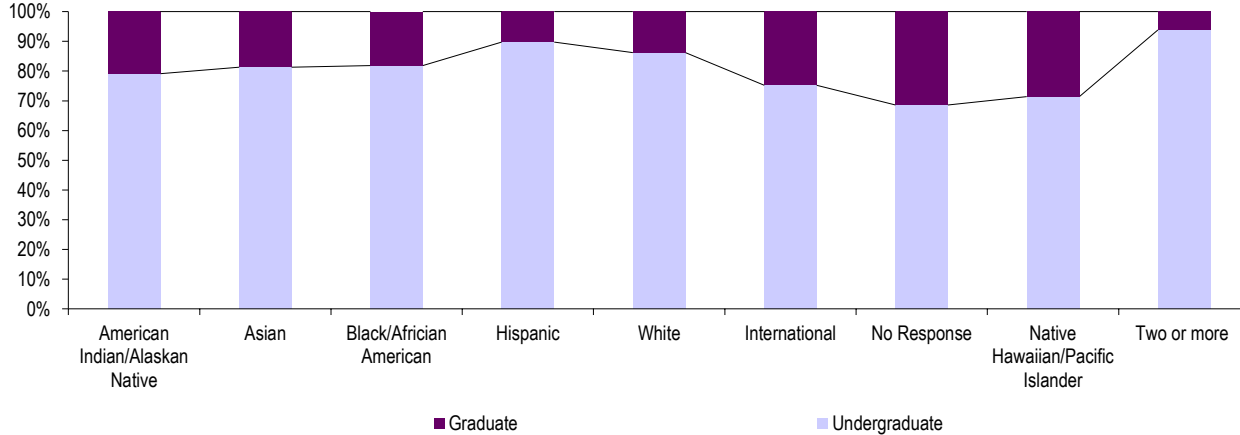
### New Freshmen



Source: Office of the Registrar

## Fall 2013 Enrollment by Race/Ethnicity

	American Indian/ Alaskan Native		Asian		Black/ African American		Hispanic		White		International		No Response		Native Hawaiian/ Pacific Islander		Two or more	
	N	%	N	%	N	%	N	%	N	%	N	%	N	%	N	%	N	%
	Enrollment	24	100	107	100	341	100	322	100	10,404	100	520	100	255	100	7	100	179
Undergraduate	19	79.2	87	81.3	279	81.8	289	89.8	8,967	86.2	391	75.2	175	68.6	5	71.4	168	93.9
Graduate	5	20.8	20	18.7	62	18.2	33	10.2	1,437	13.8	129	24.8	80	31.4	2	28.6	11	6.1
Percentage		0.2		0.9		2.8		2.6		85.6		4.3		2.1		0.1		1.5



Undergraduate 10,380  
Graduate 1,779

## Minority Student Enrollment 2002-2013

### UNDERGRADUATE

### GRADUATE

	American Indian/ Alaskan Native	Asian/ Pacific Islander	Black/ African American	Hispanic/ Latino	Native Hawaiian/ Pacific Islander	Two or more		American Indian/ Alaskan Native	Asian/ Pacific Islander	Black/ African American	Hispanic/ Latino	Native Hawaiian/ Pacific Islander	Two or more
2002	25	109	319	195			6	19	78	12			
2003	28	130	323	187			4	11	103	21			
2004	30	114	324	200			4	11	101	25			
2005	23	116	317	164			3	13	98	22			
2006	28	131	288	181			3	16	89	24			
2007	34	133	287	177			2	18	70	24			
2008	28	121	300	199			6	26	92	38			
2009	20	117	305	243	5	77	3	19	72	39	0		4
2010	21	105	303	232	4	103	4	19	80	44	0		7
2011	17	118	300	257	2	121	7	26	66	41	1		11
2012	21	107	300	280	4	143	3	21	67	33	0		10
2013	19	87	279	289	5	168	5	20	62	33	2		11

Source: *Office of the Registrar*

\*Includes all international students; other categories include American citizens, immigrants, asylees, and refugees only.

NOTE: The Race/Ethnicity reporting was changed in Fall 2009 semester to implement the new U.S. Department of Education guidelines.

## Fall On-Campus Headcount and Full-Time Equivalent (FTE) Enrollment by Level 2002-2013

	Headcount							FTE Enrollment						
	Undergraduate					Graduate		Undergraduate					Graduate	
	F	S	Jr	Sr	Unclassified	Master's	Advanced	F	S	Jr	Sr	Unclassified	Master's	Advanced
<b>2002</b>	2,522	2,293	3,296	3,874	297	1,163	481	2,319	2,098	2,928	3,328	88	839	279
<b>2003</b>	2,278	2,085	3,195	3,960	256	1,173	494	2,063	1,890	2,848	3,403	79	862	279
<b>2004</b>	2,199	1,957	2,921	3,936	207	1,100	504	1,997	1,764	2,589	3,377	68	893	318
<b>2005</b>	2,189	2,004	2,928	3,591	240	1,112	449	2,045	1,869	2,665	3,133	89	933	282
<b>2006</b>	2,266	1,919	2,857	3,418	242	1,113	445	2,090	1,814	2,631	3,001	87	945	267
<b>2007</b>	2,520	1,924	2,866	3,425	275	1,157	442	2,299	1,808	2,646	3,003	100	998	253
<b>2008</b>	2,528	2,100	2,766	3,416	237	1,369	492	2,343	2,003	2,563	3,010	94	1,080	272
<b>2009</b>	2,377	2,214	2,971	3,482	250	1,300	486	2,172	2,109	2,772	3,057	93	1,098	270
<b>2010</b>	2,340	2,181	3,037	3,574	259	1,289	521	2,139	2,068	2,827	3,159	108	1,076	304
<b>2011</b>	2,388	2,173	2,823	3,872	152	1,236	524	2,060	2,031	2,562	3,342	60	1,046	292
<b>2012</b>	2,091	2,096	2,737	3,589	142	1,161	457	1,891	1,999	2,533	3,153	54	977	266
<b>2013</b>	2,037	1,902	2,662	3,569	210	1,283	496	1,874	1,810	2,485	3,114	60	991	282

Source: Office of the Registrar



## First Major Only by College and Level: Fall 2008 - 2013

	Undergraduate						Graduate					
	2008	2009	2010	2011	2012	2013	2008	2009	2010	2011	2012	2013
<b>Total University</b>	<b>11,047</b>	<b>11,294</b>	<b>11,391</b>	<b>11,408</b>	<b>10,655</b>	<b>10,380</b>	<b>1,861</b>	<b>1,786</b>	<b>1,810</b>	<b>1,760</b>	<b>1,618</b>	<b>1,779</b>
Business Administration	2,446	2,350	2,324	2,185	2,038	2,002	110	85	65	84	89	86
Education	2,085	2,296	2,381	2,368	2,179	2,188	670	667	564	557	528	603
Humanities , Arts and Sciences	-	-	-	3,846	3,699	3,499	-	-	-	472	381	417
Social and Behavioral Sciences	1,750	1,803	1,863	1,921	1,859	1,780	183	192	282	249	231	246
No Specific College	1,249	1,151	1,125	1,088	880	911	481	377	418	398	389	427

Source: Office of the Registrar

## Annual Degrees Awarded by Level 2003-2013

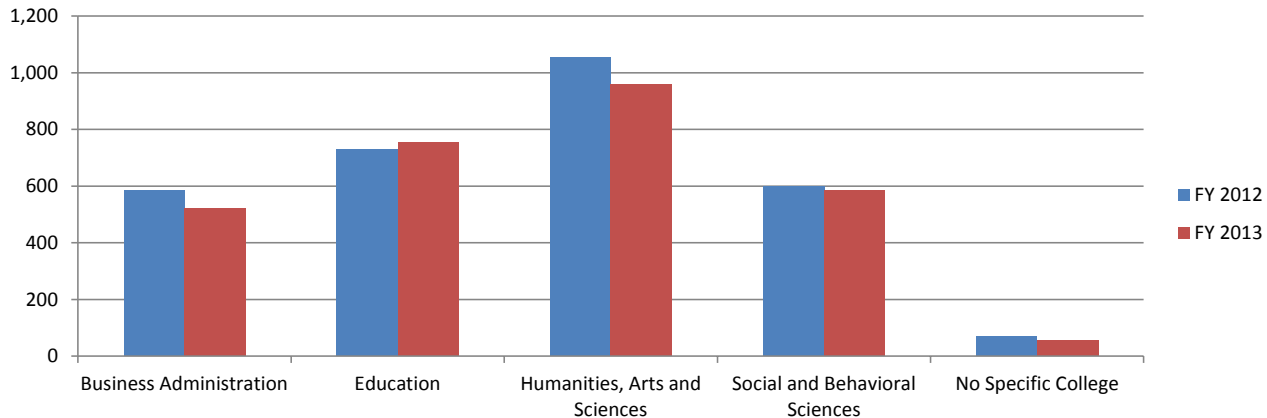
	2002- 2003	2003- 2004	2004- 2005	2005- 2006	2006 - 2007	2007 - 2008	2008 - 2009	2009 - 2010	2010 - 2011	2011 - 2012	2012 - 2013	5 Yr % Change	10 Yr % Change
<b>Total Degrees Awarded</b>	<b>3,018</b>	<b>3,039</b>	<b>3,176</b>	<b>2,933</b>	<b>2,748</b>	<b>2,720</b>	<b>2,751</b>	<b>2,934</b>	<b>2,725</b>	<b>3,034</b>	<b>2,873</b>	<b>5.6</b>	<b>-4.8</b>
Baccalaureate	2,592	2,584	2,669	2,423	2,259	2,221	2,268	2,347	2,198	2,440	2,349	5.8	-9.4
Master's	405	434	494	485	471	474	467	561	509	572	483	1.9	19.3
Specialists	9	11	3	7	10	9	6	6	5	10	13	44.4	44.4
Doctorates	12	10	10	18	8	16	10	20	13	12	28	75.0	133.3
<b>Undergraduate Degrees Awarded</b>	<b>2,592</b>	<b>2,584</b>	<b>2,669</b>	<b>2,423</b>	<b>2,259</b>	<b>2,221</b>	<b>2,268</b>	<b>2,347</b>	<b>2,198</b>	<b>2,440</b>	<b>2,349</b>	<b>5.8</b>	<b>-9.4</b>
Bachelor of Arts	2,449	2,463	2,514	2,272	2,148	2,121	2,148	2,201	2,079	2,293	2,227	5.0	-9.1
Bachelor of Fine Arts	7	8	9	15	8	8	3	8	6	11	11	37.5	57.1
Bachelor of Music	24	23	22	19	19	14	22	27	15	22	18	28.6	-25.0
Bachelor of Science	84	74	90	93	64	64	76	84	84	98	79	23.4	-6.0
Bachelor of Technology*	1	0	0	0	0	0	0	0	0	0	0	-	-
Bachelor of Liberal Studies	27	16	34	24	20	14	19	27	14	16	14	0.0	-48.1
<b>Graduate Degrees Awarded</b>	<b>426</b>	<b>455</b>	<b>507</b>	<b>510</b>	<b>489</b>	<b>499</b>	<b>483</b>	<b>587</b>	<b>527</b>	<b>594</b>	<b>524</b>	<b>5.0</b>	<b>23.0</b>
Master of Accounting	7	23	13	19	11	23	36	29	21	25	20	-13.0	185.7
Master of Arts in Education	114	127	147	108	129	119	99	147	105	121	104	-12.6	-8.8
Master of Arts	215	198	206	237	231	208	204	243	255	284	235	13.0	9.3
Master of Business Administration	5	21	52	62	35	42	42	40	31	27	28	-33.3	460.0
Master of Music	12	11	19	12	13	22	14	24	10	26	11	-50.0	-8.3
Master of Public Policy	8	11	6	5	11	16	10	4	10	11	9	-43.8	12.5
Master of Science	17	13	21	15	10	10	16	15	19	21	22	120.0	29.4
Master of Social Work	27	30	30	27	31	29	27	40	41	40	33	13.8	22.2
Professional Science Master's	0	0	0	0	0	5	19	19	17	17	21	NA	NA
Specialist in Education	9	11	3	7	10	9	6	6	5	10	13	44.4	44.4
Doctor of Technology	2	2	1	3	0	1	1	2	1	1	2	NA	0.0
Doctor of Education	10	8	9	15	8	15	9	18	12	11	26	73.3	160.0

Source: Office of the Registrar

\*The Bachelor of Technology Degree was dropped effective Fall 1996 when the Bachelor of Technology Major in Construction Management was changed to a Bachelor of Science Major in Construction Management.

## Degrees Granted by College 2011-2012 and 2012-2013

	Baccalaureates				Master's				Specialists				Doctorates			
	2011-2012		2012-2013		2011-2012		2012-2013		2011-2012		2012-2013		2011-2012		2012-2013	
	N	%	N	%	N	%	N	%	N	%	N	%	N	%	N	%
<b>Total Degrees Granted</b>	<b>2,440</b>	<b>100</b>	<b>2,349</b>	<b>100</b>	<b>572</b>	<b>100</b>	<b>483</b>	<b>100</b>	<b>10</b>	<b>100</b>	<b>13</b>	<b>100</b>	<b>12</b>	<b>100</b>	<b>30</b>	<b>100</b>
Business Administration	531	21.8	473	20.1	52	9.1	48	9.9	0	0	0	0	0	0	0	0
Education	541	22.2	543	23.1	166	29.0	172	35.6	10	100	13	100	11	91.7	26	86.7
Humanities, Arts and Sciences	839	34.4	785	33.4	214	37.4	170	35.2	0	0	0	0	1	8.3	4	13.3
Social and Behavioral Sciences	468	19.2	493	21.0	132	23.1	92	19.0	0	0	0	0	0	0	0	0
No Specific College	61	2.5	55	2.3	8	1.4	1	0.2	0	0	0	0	0	0	0	0



2012-2013 Degrees by College  
2,875 Degrees Granted

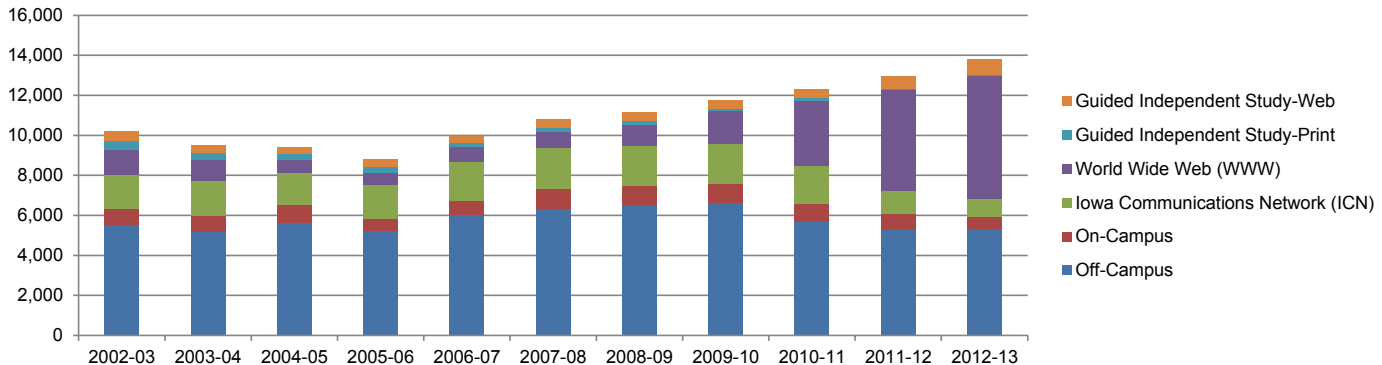
## Undergraduate Retention and Graduation Rates 1993-2012

Admit Year	Total First Time Freshmen	Continuing 2nd Year		Graduating 4th Year		Graduating 6th Year	
		N	%	N	%	N	%
1993	1,806	1,449	80.2	492	27.2	1,139	63.1
1994	1,856	1,498	80.7	541	29.1	1,161	62.6
1995	2,007	1,642	81.8	606	30.2	1,293	64.4
1996	2,012	1,649	82.0	674	33.5	1,342	66.7
1997	1,919	1,582	82.4	556	29.0	1,254	65.3
1998	1,982	1,605	81.0	588	29.7	1,273	64.2
1999	2,124	1,729	81.4	713	33.6	1,379	64.9
2000	2,218	1,863	84.0	756	34.1	1,492	67.3
2001	2,064	1,681	81.4	672	32.6	1,348	65.3
2002	1,822	1,469	80.6	614	33.7	1,152	63.2
2003	1,740	1,417	81.4	618	35.5	1,160	66.7
2004	1,652	1,337	80.9	584	35.4	1,110	67.2
2005	1,694	1,390	82.1	616	36.4	1,130	66.7
2006	1,684	1,386	82.3	648	38.5	1,117	66.3
2007	1,922	1,608	83.7	708	36.8	1,278	66.5
2008	1,976	1,627	82.3	747	37.8		
2009	1,917	1,582	82.5	721	37.6		
2010	1,934	1,586	82.0				
2011	1,897	1,543	81.3				
2012	1,678	1,391	82.9				

Source: Office of the Registrar

## Continuing Education Credit Enrollment Trends 2003-2013

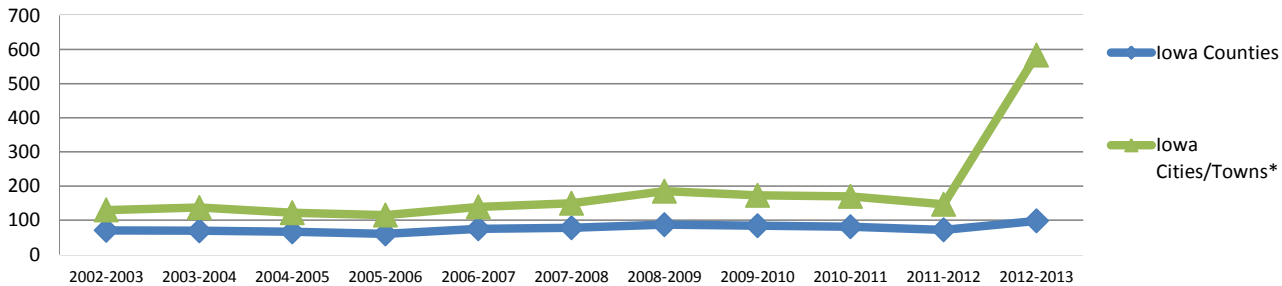
	2002 - 2003	2003 - 2004	2004 - 2005	2005 - 2006	2006 - 2007	2007 - 2008	2008 - 2009	2009 - 2010	2010 - 2011	2011- 2012	2012- 2013
<b>Total</b>	<b>10,203</b>	<b>9,528</b>	<b>9,413</b>	<b>8,778</b>	<b>9,984</b>	<b>10,783</b>	<b>11,127</b>	<b>11,749</b>	<b>12,302</b>	<b>12,924</b>	<b>13,818</b>
Annual Percent Change	3.9	-6.6	-1.2	-6.7	13.7	8.0	3.2	5.6	4.7	5.1	6.9
Off-Campus	5,543	5,182	5,629	5,246	6,048	6,330	6,477	6,617	5,690	5,257	5,336
On-Campus	809	814	910	596	700	1001	995	989	921	846	616
Iowa Communications Network (ICN)	1,686	1,768	1,606	1,719	1,936	2,070	2,009	1,967	1,856	1,123	898
World Wide Web (WWW)	1,260	1,002	630	595	735	782	1,044	1,633	3,289	5,041	6,153
Guided Independent Study-Print	454	372	294	273	229	200	197	130	109	63	67
Guided Independent Study-Web	451	390	344	349	336	400	405	413	437	594	748



## Continuing Education Courses Offered 2002 2013

	Iowa Counties	Iowa Cities/Towns*	Number of Off-Campus Degree and Certificate Programs
2002-2003	70	130	18
2003-2004	69	137	19
2004-2005	66	122	20
2005-2006	60	115	21
2006-2007	75	139	22
2007-2008	78	150	21
2008-2009	87	185	23
2009-2010	84	173	24
2010-2011	81	170	24
2011-2012	72	147	25
2012-2013	98	584	27

**Continuing Education Course Locations Offered**

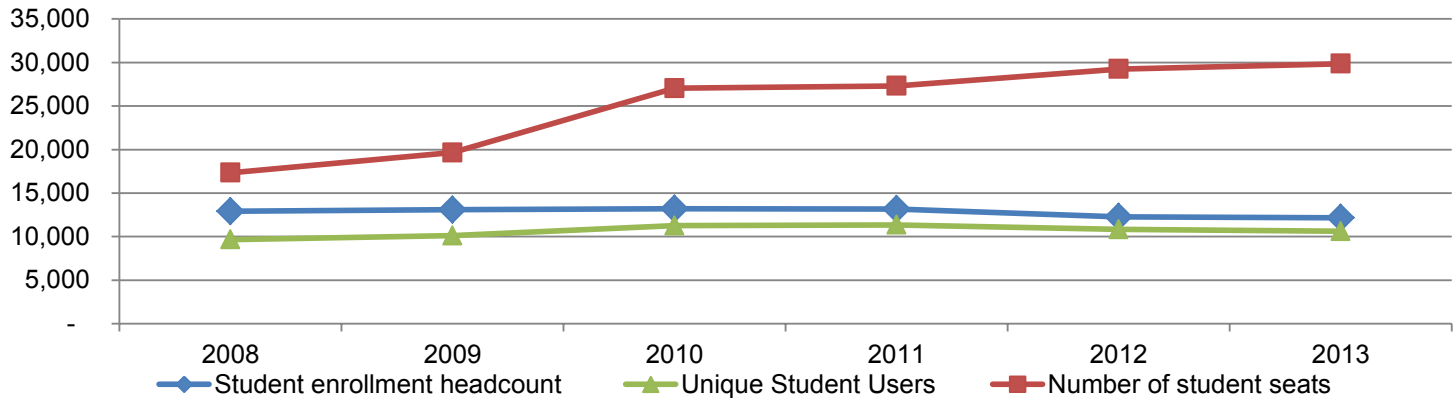


Source: *Continuing Education and Special Programs*

\*Effective 2012-2013, Iowa Cities/Towns reflect locations in which students enrolled in courses offered at an off-campus location, an ICN location, in a guided independent study course, or in an online (semester) course. Prior to 2012-2013, locations reflected only students enrolled in off-campus, ICN, or guided independent study courses. Including city/town locations for students enrolled in online courses brings reporting in line with practices at the other Iowa Regent universities.

## Web-based Learning Management System (LMS) 2008-2013

	Fall					
	2008	2009	2010	2011	2012	2013
Student enrollment headcount	12,908	13,080	13,201	13,168	12,273	12,159
Number of unique student users enrolled in LMS	9,658	10,108	11,263	11,357	10,835	10,611
Number of student seats	17,333	19,644	27,032	27,307	29,237	29,858
Number of instructors or designers	435	411	385	419	468	482
Number of active academic organized sections in LMS	671	750	1,001	1,248*	1,309	1,330



Source: ITS - Educational Technology

\*Prior to the Fall 2011 semester, UNI implemented a new course numbering system which resulted in undergraduate and graduate sections of the same

## Fall Semester Residence Hall Occupancy by Gender and Level 2002-2013

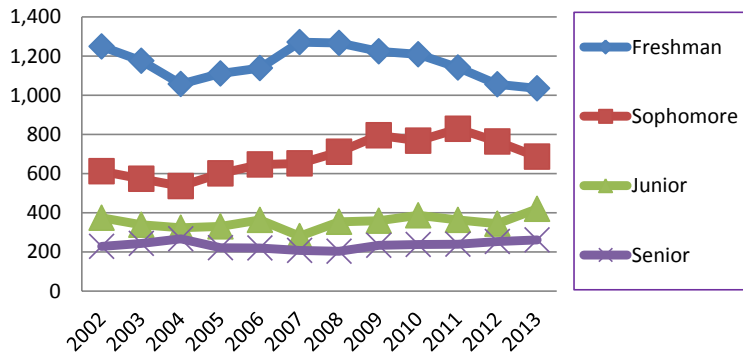
### Female

	Freshman	Sophomore	Junior	Senior	Unclassified & Graduates
<b>2002</b>	1,249	611	374	228	81
<b>2003</b>	1,176	572	338	243	52
<b>2004</b>	1,057	535	323	266	95
<b>2005</b>	1,110	600	330	221	120
<b>2006</b>	1,138	645	363	220	103
<b>2007</b>	1,270	651	280	207	109
<b>2008</b>	1,267	710	353	203	104
<b>2009</b>	1,223	794	359	233	65
<b>2010</b>	1,209	767	386	237	101
<b>2011</b>	1,141	828	363	238	78
<b>2012</b>	1,055	763	343	252	84
<b>2013</b>	1,034	685	420	261	88

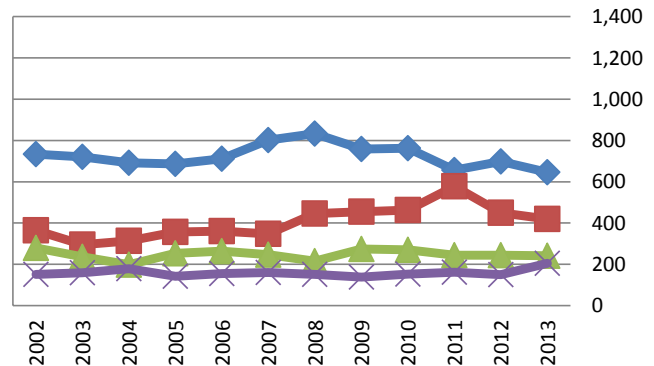
### Male

	Freshman	Sophomore	Junior	Senior	Unclassified & Graduates
	733	365	279	151	50
	721	295	236	159	26
	692	314	198	179	83
	686	357	253	142	79
	711	360	264	155	82
	802	347	247	161	103
	833	446	215	151	90
	759	455	274	138	69
	763	463	270	153	79
	657	578	244	162	70
	698	450	244	150	84
	646	419	241	205	62

### Undergraduates - Female



### Male







**Alumni**



# Alumni

## Total Living Alumni by College 2009-2013

College	2009		2010		2011		2012		2013	
	N	%	N	%	N	%	N	%	N	%
<b>Sub-total Alumni***</b>	<b>105,056</b>		<b>107,208</b>		<b>109,285</b>		<b>110,837</b>		<b>113,152</b>	
TOTAL living Alumni****	<b>101,219</b>		<b>103,267</b>		<b>103,952^</b>		<b>106,842</b>		<b>109,062</b>	
Business Administration	20,554	19.6	21,047	19.6	21,558	19.7	21,985	19.8	22,423	19.8
Education*	33,122	31.5	33,502	31.2	33,879	31.0	33,880	30.6	34,370	30.4
Humanities, Arts and Sciences	-	-	-	-	32,861	30.1	33,534	30.3	34,355	30.4
Social and Behavioral Sciences	16,643	15.8	17,089	15.9	17,558	16.1	17,940	16.2	18,438	16.3
College Unassigned**	3,284	3.1	3,363	3.1	3,429	3.1	3,498	3.2	3,566	3.2

Source: *Alumni Association*

\* Includes Alumni earning only Teaching Certificates.

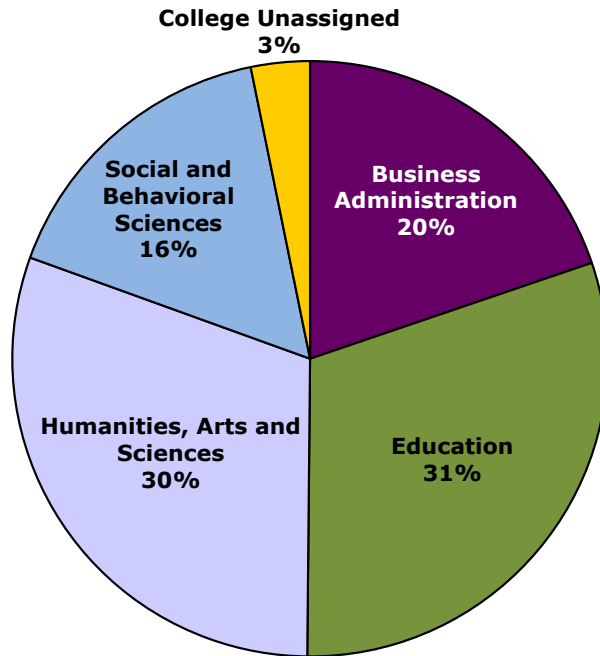
\*\* Includes Individual Studies, General Studies and Liberal Studies.

\*\*\* Alumni having earned degrees in different colleges are counted in each college; alumni earning multiple degrees in the same college are counted only once for that college.

\*\*\*\* Grads counted a single time even when earning multiple degree(s).

Updated 10-4-2013; includes grads thru Sum '13

## Total Living Alumni by College



Alumni = 113,152

## Alumni by State 2013\*

State	Alumni	State	Alumni
Alabama	188	Montana	167
Alaska	138	Nebraska	1,663
Arizona	1,998	Nevada	358
Arkansas	305	New Hampshire	72
California	2,512	New Jersey	210
Colorado	2,607	New Mexico	256
Connecticut	137	New York	494
Delaware	41	North Carolina	668
Florida	1,649	North Dakota	104
Georgia	642	Ohio	608
Hawaii	147	Oklahoma	320
Idaho	154	Oregon	514
Illinois	3,974	Pennsylvania	355
Indiana	664	Rhode Island	32
Iowa	66,888	South Carolina	286
Kansas	1,419	South Dakota	523
Kentucky	218	Tennessee	465
Louisiana	128	Texas	3,128
Maine	49	Utah	136
Maryland	326	Vermont	29
Massachusetts	226	Virginia	694
Michigan	606	Washington	782
Minnesota	5,268	West Virginia	33
Mississippi	73	Wisconsin	2,231
Missouri	1,997	Wyoming	137
		District of Columbia	80

Source: Alumni Association

\*As of 10-7-2013 including Sum '13 grads

## Alumni by Iowa County 2013

County	Alumni	County	Alumni	County	Alumni	County	Alumni
Adair	58	Decatur	37	Johnson	2,194	Pocahontas	106
Adams	27	Delaware	474	Jones	360	Polk	11,236
Allamakee	270	Des Moines	361	Keokuk	152	Pottawattamie	598
Appanoose	86	Dickinson	382	Kossuth	356	Poweshiek	400
Audubon	72	Dubuque	1,962	Lee	238	Ringgold	33
Benton	715	Emmet	112	Linn	6,171	Sac	164
Black Hawk	11,795	Fayette	561	Louisa	109	Scott	2,509
Boone	367	Floyd	563	Lucas	56	Shelby	94
Bremer	1,743	Franklin	242	Lyon	44	Sioux	165
Buchanan	956	Fremont	28	Madison	180	Story	1,352
Buena Vista	205	Greene	165	Mahaska	230	Tama	638
Butler	781	Grundy	865	Marion	416	Taylor	28
Calhoun	203	Guthrie	145	Marshall	936	Union	83
Carroll	427	Hamilton	341	Mills	87	Van Buren	44
Cass	136	Hancock	212	Mitchell	289	Wapello	329
Cedar	308	Hardin	631	Monona	52	Warren	853
Cerro Gordo	1,359	Harrison	83	Monroe	70	Washington	334
Cherokee	130	Henry	233	Montgomery	49	Wayne	33
Chickasaw	443	Howard	240	Muscatine	550	Webster	650
Clarke	55	Humboldt	235	O'Brien	157	Winnebago	294
Clay	290	Ida	85	Osceola	32	Winneshiek	538
Clayton	404	Iowa	273	Page	90	Woodbury	622
Clinton	613	Jackson	318	Palo Alto	190	Worth	178
Crawford	145	Jasper	509	Plymouth	251	Wright	292
Dallas	1,222	Jefferson	133				
Davis	56					<b>TOTAL</b>	<b>66,888</b>

Source: Alumni Association 10-7-2013

## Post-Graduation Status of 2011-2012 and 2012-2013 Bachelor's Degree Recipients\*

College	Graduates	No Information	Total Responding	Employed	Graduate Education	Undergrad Education
<b>2011-2012</b>						
Business	551	135	416	335	88	0
Education	724	321	403	340	25	0
Humanities, Arts and Sciences	1001	361	640	438	35	0
Social & Behavioral Sciences	592	243	349	254	45	0
<b>TOTAL</b>	<b>2,868</b>	<b>1,060</b>	<b>1,808</b>	<b>1,367</b>	<b>193</b>	<b>0</b>
			(1808 of 2868)	(1367 of 1808)	(193 of 1808)	(0 of 1808)
			<b>63.0%</b>	<b>75.6%</b>	<b>10.7%</b>	<b>0.00%</b>
<b>2012-2013</b>						
Business	448	65	383	300	35	0
Education	534	118	416	341	54	0
Humanities, Arts and Sciences	793	158	635	418	131	0
Social & Behavioral Sciences	507	114	393	248	84	0
<b>TOTAL</b>	<b>2,282</b>	<b>455</b>	<b>1,827</b>	<b>1,307</b>	<b>304</b>	<b>0</b>
			(1827 of 2282)	(1307 of 1827)	(304 of 1827)	(0 of 1827)
			<b>80.1%</b>	<b>71.5%</b>	<b>16.6%</b>	<b>0.00%</b>

Source: Career Services

\*Method: Data was collected through a survey of graduates attending commencement exercises and follow-up telephone calls.

## Post-Graduation Status of 2011-12 and 2012-2013 Graduate Degree Recipients\*

College	Graduates	No Information	Total Responding	Employed**	Continuing Education	Other
<b>2011-2012</b>						
Business	33	0	33	29	3	1
Education	81	5	76	69	4	3
Humanities, Arts and Sciences	97	2	95	76	13	5
Social & Behavioral Sciences	70	1	69	66	2	1
<b>TOTAL</b>	<b>281</b>	<b>8</b>	<b>273</b>	<b>240</b>	<b>22</b>	<b>10</b>
			(273 of 281)	(240 of 273)	(22 of 273)	(10 of 273)
			<b>97.2%</b>	<b>87.9%</b>	<b>8.1%</b>	<b>3.7%</b>
<b>2012-2013</b>						
Business	12	1	11	11	0	0
Education	85	2	83	79	2	2
Humanities, Arts and Sciences	69	4	65	59	6	0
Social & Behavioral Sciences	56	2	54	50	3	1
<b>TOTAL</b>	<b>222</b>	<b>9</b>	<b>213</b>	<b>199</b>	<b>11</b>	<b>3</b>
			(213 of 222)	(199 of 213)	(11 of 213)	(3 of 213)
			<b>95.9%</b>	<b>93.4%</b>	<b>5.2%</b>	<b>1.4%</b>

Source: CIO's Office and Institutional Research

\*Method: Data was collected through a survey of graduates attending commencement exercises.

\*\*87% of respondents Employed in Iowa



## Undergraduate Plans for Further Education 2012-2013\*

College	Completed Survey Item		Accepted to a Graduate/Professional Program		Currently Applying to Programs		Accepted to Another Undergraduate Program	
	N	%	N	%	N	%	N	%
<b>TOTAL</b>	<b>1,258</b>	<b>100</b>	<b>250</b>	<b>100</b>	<b>191</b>	<b>100</b>	<b>131</b>	<b>100</b>
Business Administration	226	17.97%	21	8.40%	12	6.28%	16	12.21%
Education	261	20.75%	34	13.60%	36	18.85%	33	25.19%
Humanities, Arts and Sciences	349	27.74%	87	34.80%	54	28.27%	5	3.82%
Social and Behavioral Sciences	422	33.55%	108	43.20%	89	46.60%	77	58.78%
			(250 of 1258)		(191 of 1258)		(131 of 1258)	
			<b>19.87%</b>		<b>15.18%</b>		<b>10.41%</b>	

Source: CIO's Office and Institutional Research

\*December 2012 and May 2013 Graduating Senior Surveys

## Graduate Plans for Further Education 2012-2013\*

College	Completed Survey Item		Accepted to a Graduate/Professional Program		Currently Applying to Programs		No Definite Plans for Further Education	
	N	%	N	%	N	%	N	%
<b>TOTAL</b>	<b>1,258</b>	<b>100.00%</b>	<b>250</b>	<b>19.87%</b>	<b>191</b>	<b>15.18%</b>	<b>131</b>	<b>10.41%</b>
Business Administration	226	17.97%	21	8.40%	12	6.28%	16	12.21%
Education	261	20.75%	34	13.60%	36	18.85%	33	25.19%
Humanities, Arts and Sciences	349	27.74%	87	34.80%	54	28.27%	5	3.82%
Social and Behavioral Sciences	422	33.55%	108	43.20%	89	46.60%	77	58.78%
			(250 of 1258)		(191 of 1258)		(131 of 1258)	
			<b>19.9%</b>		<b>15.2%</b>		<b>10.4%</b>	

Source: CIO's Office and Institutional Research

\*December 2012 and May 2013 Graduate Program Surveys



# Faculty & Staff

Faculty & Staff



# Faculty & Staff

## Fall 2013 Faculty Profile by College\*

	Total University	Business	Education	Hum, Arts & Sciences^	S&B Sciences	Cont Ed No Specific	Library
Faculty	801	80	187	351	137	28	18
Full-Time	600	64	140	262	109	9	16
Part-Time	201	16	47	89	28	19	2
Female	385	27	117	155	63	13	10
Male	416	53	70	196	74	15	8
American Indian/Alaskan Native	1	0	1	0	0	0	0
Asian/Pacific Islander	53	12	4	30	7	0	0
Black/African American	22	2	6	9	4	1	0
Hispanic/Latino	20	1	5	11	3	0	0
Native Hawaiian/Other Pacific Islander	1	0	0	1	0	0	0
Two or more races	8	2	1	4	1	0	0
White	696	63	170	296	122	27	18
Professors	198	23	34	95	41	3	2
Associate Professors	220	19	42	96	47	4	12
Assistant Professors	122	13	31	54	20	1	3
Instructors/Lecturers	261	25	80	106	29	20	1
Tenured	450	41	108	192	87	8	14
Tenure-Track	119	14	28	52	22	0	3
Non Tenure-Track	232	25	51	107	28	20	1

Source: CIO's Office and Institutional Research

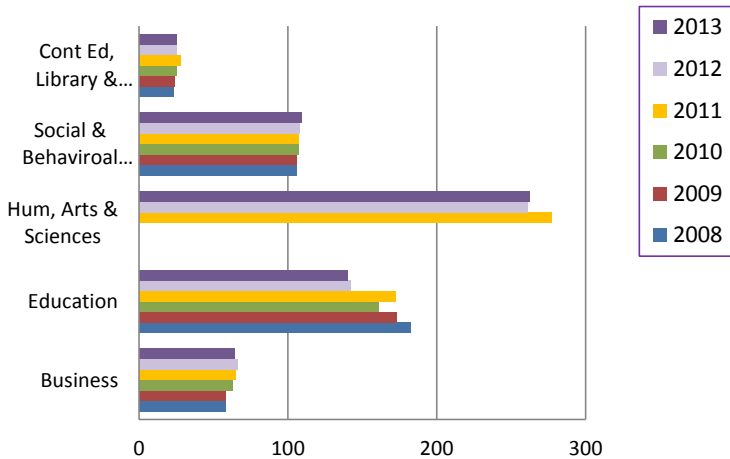
\*Includes Academic Department Heads and other Administrators with Faculty Rank but excludes Deans and above

^Effective July 2011, the merge of College of Humanities and Fine Arts and College of Natural Sciences to College of Humanities, Arts and Sciences

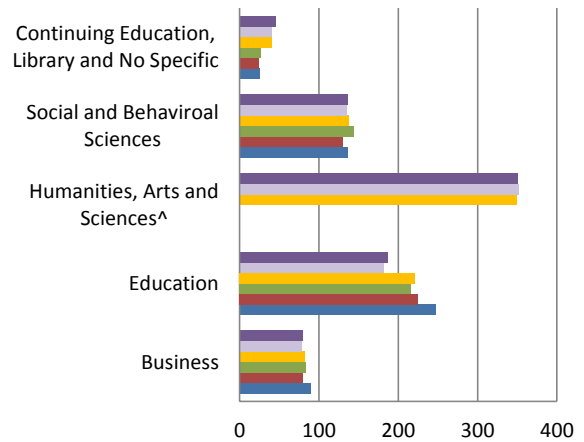
## Faculty by College 2008-2013\*

	Full-Time						Total Full-Time + Part-Time					
	2008	2009	2010	2011	2012	2013	2008	2009	2010	2011	2012	2013
<b>TOTAL</b>	639	632	623	649	602	600	856	810	824	832	788	801
Business	58	58	63	65	66	64	90	80	84	82	78	80
Education	182	173	161	172	142	140	247	225	216	221	182	187
Humanities, Arts and Sciences^	-	-	-	277	261	262	-	-	-	350	352	351
Social and Behavioral Sciences	106	106	107	107	108	109	136	130	144	138	135	137
Continuing Education, Library and No Specific	23	24	25	28	25	25	26	25	27	41	41	46

### Faculty: Full-Time



### Total



Source: CIO's Office and Institutional Research

\*Includes Academic Department Heads and other Administrators with Faculty Rank but excludes Deans and above

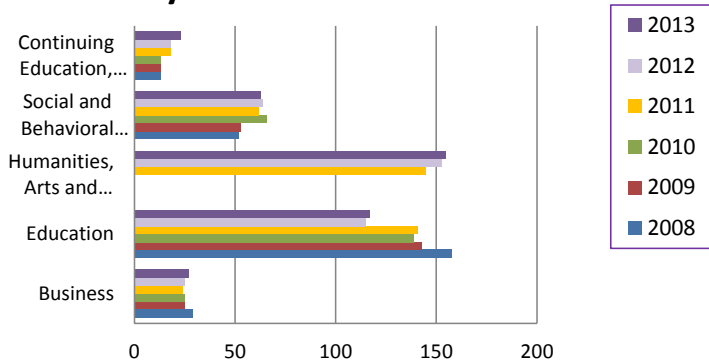
^Effective July 2011, the merge of College of Humanities and Fine Arts and College of Natural Sciences to College of Humanities, Arts and Sciences

## Faculty by College and Gender 2008-2013\*

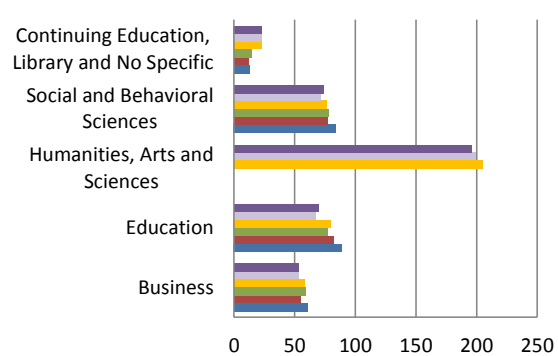
	Female					
	2008	2009	2010	2011	2012	2013
<b>TOTAL</b>	<b>399</b>	<b>379</b>	<b>388</b>	<b>390</b>	<b>375</b>	<b>385</b>
Business	29	25	25	24	25	27
Education	158	143	139	141	115	117
Humanities, Arts and Sciences	-	-	-	145	153	155
Social and Behavioral Sciences	52	53	66	62	64	63
Continuing Education, Library and No Specific	13	13	13	18	18	23

	Male					
	2008	2009	2010	2011	2012	2013
<b>TOTAL</b>	<b>457</b>	<b>431</b>	<b>436</b>	<b>442</b>	<b>413</b>	<b>416</b>
Business	61	55	59	58	53	53
Education	89	82	77	80	67	70
Humanities, Arts and Sciences	-	-	-	205	199	196
Social and Behavioral Sciences	84	77	78	76	71	74
Continuing Education, Library and No Specific	13	12	14	23	23	23

### Faculty: Female



### Male



Source: CIO's Office and Institutional Research

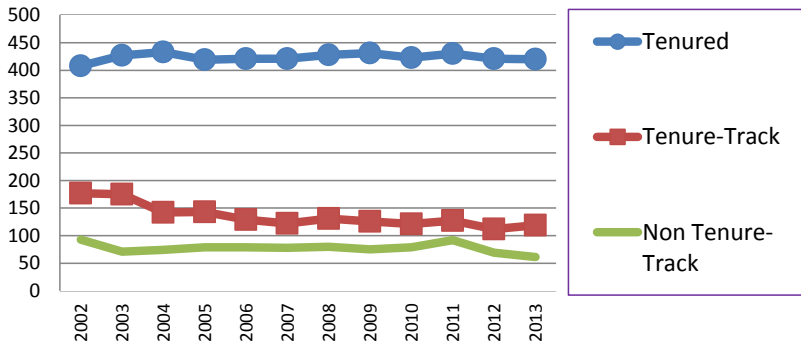
\*Includes Academic Department Heads and other Administrators with Faculty Rank but excludes Deans and above

^Effective July 2011, the merge of College of Humanities and Fine Arts and College of Natural Sciences to College of Humanities, Arts and Sciences

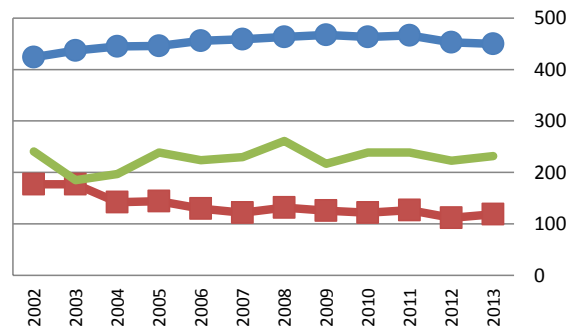
## Faculty by Tenure Status 2002-2013\*

Fall Semester	Tenured		Tenure-Track		Non Tenure-Track	
	Full-Time	Part-Time	Full-Time	Part-Time	Full-Time	Part-Time
2002	408	16	177	0	93	148
2003	427	10	175	2	71	114
2004	433	12	142	0	74	123
2005	419	27	143	1	79	160
2006	421	35	129	1	79	145
2007	421	38	122	0	78	152
2008	428	35	131	1	80	181
2009	431	36	126	0	75	142
2010	423	40	121	1	79	160
2011	430	36	127	0	92	147
2012	421	32	112	0	69	154
2013	420	30	119	0	61	171

### Faculty: Full-Time



### Total



Source: CIO's Office and Institutional Research

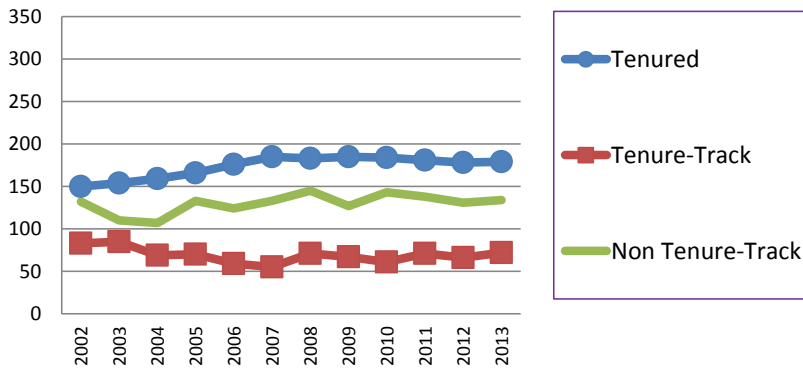
\*Includes Academic Department Heads and other Administrators with Faculty Rank but excludes Deans and above



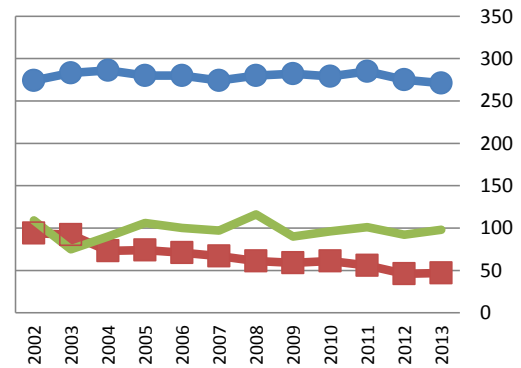
## Faculty Tenure Status by Gender 2002-2013\*

Fall Semester	Tenured		Tenure-Track		Non Tenure-Track	
	Female	Male	Female	Male	Female	Male
2002	150	274	83	94	132	109
2003	154	283	85	92	110	75
2004	159	286	69	73	107	90
2005	166	280	70	74	133	106
2006	176	280	59	71	124	100
2007	185	274	55	67	133	97
2008	183	280	71	61	145	116
2009	185	282	67	59	127	90
2010	184	279	61	61	143	96
2011	181	285	71	56	138	101
2012	178	275	66	46	131	92
2013	179	271	72	47	134	98

### Faculty: Female



### Male



Source: CIO's Office and Institutional Research

\*Includes Academic Department Heads and other Administrators with Faculty Rank but excludes Deans and above

## Fall 2013 Faculty by Tenure Status and Minority\*

	Total University	Business	Education	Hum, Arts & Sciences^	S&B Sciences	No Specific	Library
<b>TOTAL</b>	801	80	187	351	137	28	18
<b>Tenured</b>	<b>450</b>	<b>41</b>	<b>108</b>	<b>192</b>	<b>87</b>	<b>8</b>	<b>14</b>
American Indian/Alaskan Native	1		1				
Asian	34	8	1	21	4		
Black/African American	11		2	6	3		
Hispanic	10		2	6	2		
Native Hawaiian/Pacific Islander	1			1			
White	390	33	102	156	77	8	14
Two or more races	3			2	1		
<b>Tenure-Track</b>	<b>119</b>	<b>14</b>	<b>28</b>	<b>52</b>	<b>22</b>	<b>0</b>	<b>3</b>
American Indian/Alaskan Native	0						
Asian	11	3	2	3	3		
Black/African American	4	2	1		1		
Hispanic	6	1	2	2	1		
Native Hawaiian/Pacific Islander	0						
White	98	8	23	47	17		3
Two or more races	0						
<b>Non Tenure-Track</b>	<b>232</b>	<b>25</b>	<b>51</b>	<b>107</b>	<b>28</b>	<b>20</b>	<b>1</b>
American Indian/Alaskan Native	0						
Asian	8	1	1	6			
Black/African American	7		3	3		1	
Hispanic	4		1	3			
Native Hawaiian/Pacific Islander	0						
White	208	22	45	93	28	19	1
Two or more races	5	2	1	2			

Source: CIO's Office and Institutional Research

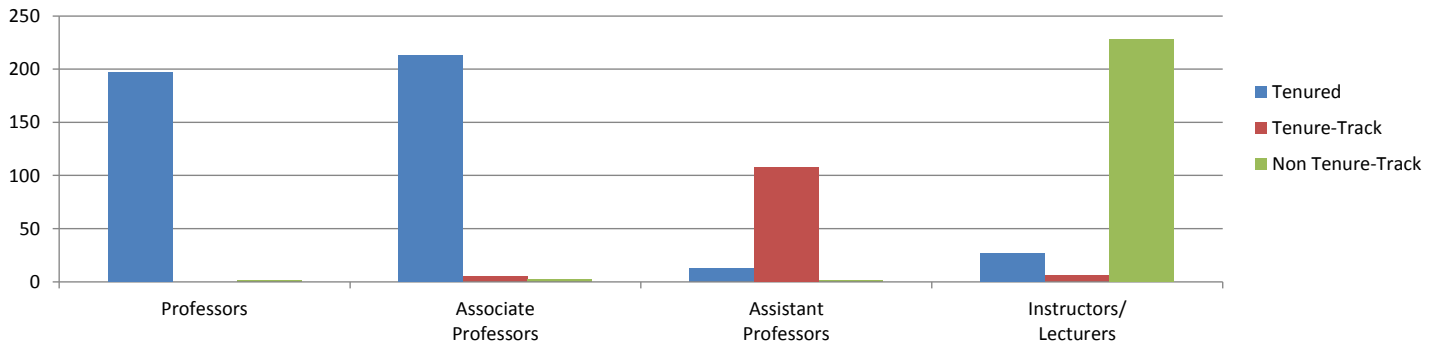
\*Includes Academic Department Heads and other Administrators with Faculty Rank but excludes Deans and above

^Effective July 2011, the merge of College of Humanities and Fine Arts and College of Natural Sciences to College of Humanities, Arts and Sciences

## Faculty Tenure Status by Rank 2002-2013\*

	Tenured				Tenure-Track				Non Tenure-Track			
	Professors	Associate Professors	Assistant Professors	Instructors/Lecturers	Professors	Associate Professors	Assistant Professors	Instructors/Lecturers	Professors	Associate Professors	Assistant Professors	Instructors/Lecturers
2002	180	191	25	28	0	7	143	27	5	1	10	225
2003	180	205	24	28	0	6	150	21	4	0	5	176
2004	184	215	18	28	0	4	122	16	4	0	6	187
2005	187	213	17	29	0	2	126	16	4	0	4	231
2006	188	217	14	37	0	2	116	12	4	0	6	214
2007	181	225	12	41	0	1	109	12	4	0	6	220
2008	188	222	12	41	0	1	117	14	5	0	6	250
2009	199	217	12	39	0	4	112	10	5	0	3	209
2010	196	218	12	37	0	4	107	11	2	1	3	233
2011	197	224	11	34	0	3	113	11	2	2	5	230
2012	190	221	12	30	0	2	104	6	4	2	2	215
2013	197	213	13	27	0	5	108	6	1	2	1	228

## Fall 2013 Faculty Tenure Status by Rank



Source: CIO's Office and Institutional Research

\*Includes Academic Department Heads and other Administrators with Faculty Rank but excludes Deans and above

## Faculty by College and Tenure Status 2008-2013

Fall Semester	Total University	Business	Education	Humanities, Arts and Sciences <sup>^</sup>	Social and Behavioral Sciences	Continuing Ed No Specific <i>and</i> Library
<b>2008</b>						
Tenured	463	41	134	-	79	19
Tenure-Track	132	9	32	-	22	3
Non Tenure-Track	261	40	81	-	35	4
<b>2009</b>						
Tenured	467	45	131	-	80	20
Tenure-Track	126	8	27	-	24	3
Non Tenure-Track	217	27	67	-	26	2
<b>2010</b>						
Tenured	463	46	119	-	85	21
Tenure-Track	122	11	27	-	26	3
Non Tenure-Track	239	27	70	-	33	3
<b>2011</b>						
Tenured	466	46	112	200	89	19
Tenure-Track	127	14	37	53	20	3
Non Tenure-Track	239	22	72	97	29	19
<b>2012</b>						
Tenured	463	42	106	198	85	22
Tenure-Track	122	13	31	46	21	1
Non Tenure-Track	239	23	45	108	29	18
<b>2013</b>						
Tenured	450	41	108	192	87	22
Tenure-Track	119	14	28	52	22	3
Non Tenure-Track	232	25	51	107	28	21

Source: CIO's Office and Institutional Research

\*Includes Academic Department Heads and other Administrators with Faculty Rank but excludes Deans and above

<sup>^</sup>Effective July 2011, the merge of College of Humanities and Fine Arts and College of Natural Sciences to College of Humanities, Arts and Sciences

## Faculty by College, Gender and Tenure Status 2009-2013

College	Full-Time										Part-Time										Total				
	09	10	11	12	13	09	10	11	12	13	09	10	11	12	13	09	10	11	12	13					
	F	F	F	F	F	M	M	M	M	M	F	F	F	F	F	M	M	M	M	M					
<b>Faculty</b>	<b>283</b>	<b>270</b>	<b>289</b>	<b>274</b>	<b>277</b>	<b>349</b>	<b>353</b>	<b>358</b>	<b>329</b>	<b>323</b>	<b>96</b>	<b>118</b>	<b>103</b>	<b>104</b>	<b>108</b>	<b>82</b>	<b>83</b>	<b>80</b>	<b>82</b>	<b>93</b>	<b>810</b>	<b>824</b>	<b>830</b>	<b>789</b>	<b>801</b>
Tenured	168	164	168	168	168	263	259	265	255	252	17	20	16	13	11	19	20	20	19	19	467	463	469	455	450
Tenure-Track	67	60	70	67	72	59	61	56	48	47	0	1	0	0	0	0	0	0	0	0	126	122	126	115	119
Non Tenure-Track	48	46	51	39	37	27	33	37	26	24	79	97	87	91	97	63	63	60	63	74	217	239	235	219	232
<b>Business Administration</b>	<b>18</b>	<b>18</b>	<b>18</b>	<b>18</b>	<b>18</b>	<b>40</b>	<b>45</b>	<b>47</b>	<b>48</b>	<b>46</b>	<b>7</b>	<b>7</b>	<b>6</b>	<b>7</b>	<b>9</b>	<b>15</b>	<b>14</b>	<b>11</b>	<b>5</b>	<b>7</b>	<b>80</b>	<b>84</b>	<b>82</b>	<b>78</b>	<b>80</b>
Tenured	10	10	10	9	9	33	34	32	32	31	1	1	1	0	0	1	1	3	1	1	45	46	46	42	41
Tenure-Track	3	3	4	4	5	5	8	10	9	9	0	0	0	0	0	0	0	0	0	0	8	11	14	13	14
Non Tenure-Track	5	5	4	5	4	2	3	5	7	6	6	6	5	7	9	14	13	8	4	6	27	27	22	23	25
<b>Education</b>	<b>107</b>	<b>99</b>	<b>106</b>	<b>91</b>	<b>89</b>	<b>66</b>	<b>62</b>	<b>66</b>	<b>51</b>	<b>51</b>	<b>36</b>	<b>40</b>	<b>35</b>	<b>24</b>	<b>28</b>	<b>16</b>	<b>15</b>	<b>14</b>	<b>16</b>	<b>19</b>	<b>225</b>	<b>216</b>	<b>221</b>	<b>182</b>	<b>187</b>
Tenured	64	59	56	57	57	49	41	41	37	37	13	12	8	5	6	5	7	7	7	8	131	119	112	106	108
Tenure-Track	23	19	27	22	22	4	7	10	9	6	0	1	0	0	0	0	0	0	0	0	27	27	37	31	28
Non Tenure-Track	20	21	23	12	10	13	14	15	5	8	23	27	27	19	22	11	8	7	9	11	67	70	72	45	51
<b>Humanities, Arts and Sciences^</b>	<b>0</b>	<b>0</b>	<b>107</b>	<b>104</b>	<b>109</b>	<b>0</b>	<b>0</b>	<b>170</b>	<b>157</b>	<b>153</b>	<b>0</b>	<b>0</b>	<b>38</b>	<b>49</b>	<b>46</b>	<b>0</b>	<b>0</b>	<b>35</b>	<b>42</b>	<b>43</b>	<b>0</b>	<b>0</b>	<b>350</b>	<b>352</b>	<b>351</b>
Tenured	-	-	63	60	60	-	-	127	122	120	-	-	3	6	3	-	-	7	10	9	-	-	200	198	192
Tenure-Track	-	-	23	24	28	-	-	30	22	24	-	-	0	0	0	-	-	0	0	0	-	-	53	46	52
Non Tenure-Track	-	-	21	20	21	-	-	13	13	9	-	-	35	43	43	-	-	28	32	34	-	-	97	108	107

## Faculty by College, Gender and Tenure Status 2009-2013\* (Continued)

College	Full-Time										Part-Time										Total				
	09	10	11	12	13	09	10	11	12	13	09	10	11	12	13	09	10	11	12	13					
	F	F	F	F	F	M	M	M	M	M	F	F	F	F	F	M	M	M	M	M					
<b>Social and Behavioral Sciences</b>	<b>41</b>	<b>44</b>	<b>45</b>	<b>46</b>	<b>46</b>	<b>65</b>	<b>63</b>	<b>62</b>	<b>62</b>	<b>63</b>	<b>12</b>	<b>22</b>	<b>17</b>	<b>18</b>	<b>17</b>	<b>12</b>	<b>15</b>	<b>14</b>	<b>9</b>	<b>11</b>	<b>130</b>	<b>143</b>	<b>138</b>	<b>135</b>	<b>137</b>
Tenured	25	26	28	29	31	53	54	55	54	54	1	3	4	2	2	1	2	2	0	0	80	86	89	85	87
Tenure-Track	14	17	15	15	14	10	9	5	6	8	0	0	0	0	0	0	0	0	0	0	24	22	20	21	22
Non Tenure-Track	2	1	2	2	1	2	0	2	2	1	11	19	13	16	15	11	13	12	9	11	26	35	29	29	28
<b>Continuing Ed &amp; Special Programs</b>	<b>0</b>	<b>0</b>	<b>1</b>	<b>0</b>	<b>1</b>	<b>0</b>	<b>0</b>	<b>3</b>	<b>0</b>	<b>0</b>	<b>0</b>	<b>0</b>	<b>7</b>	<b>0</b>	<b>8</b>	<b>0</b>	<b>0</b>	<b>5</b>	<b>0</b>	<b>11</b>	<b>0</b>	<b>3</b>	<b>16</b>	<b>0</b>	<b>20</b>
Tenured	0	0	0	0	0	0	0	0	0	0	0	0	0	0	0	0	0	0	0	0	0	0	0	0	0
Tenure-Track	0	0	0	0	0	0	0	0	0	0	0	0	0	0	0	0	0	0	0	0	0	0	0	0	0
Non Tenure-Track	0	0	1	0	1	0	0	3	0	0	0	0	7	0	8	0	0	5	0	11	0	3	16	0	20
<b>No Specific College</b>	<b>3</b>	<b>3</b>	<b>2</b>	<b>3</b>	<b>4</b>	<b>4</b>	<b>6</b>	<b>5</b>	<b>6</b>	<b>4</b>	<b>0</b>	<b>1</b>	<b>0</b>	<b>6</b>	<b>0</b>	<b>0</b>	<b>0</b>	<b>0</b>	<b>8</b>	<b>0</b>	<b>7</b>	<b>9</b>	<b>7</b>	<b>23</b>	<b>8</b>
Tenured	2	2	2	2	4	4	5	4	4	4	0	0	0	0	0	0	0	0	0	0	6	6	6	6	8
Tenure-Track	0	0	0	0	0	0	0	0	0	0	0	0	0	0	0	0	0	0	0	0	0	0	0	0	0
Non Tenure-Track	1	1	0	1	0	0	1	1	2	0	0	1	0	6	0	0	0	0	8	0	1	3	1	17	0
<b>Library</b>	<b>10</b>	<b>9</b>	<b>8</b>	<b>9</b>	<b>10</b>	<b>7</b>	<b>7</b>	<b>9</b>	<b>7</b>	<b>6</b>	<b>0</b>	<b>0</b>	<b>0</b>	<b>0</b>	<b>0</b>	<b>1</b>	<b>1</b>	<b>1</b>	<b>2</b>	<b>2</b>	<b>18</b>	<b>19</b>	<b>18</b>	<b>18</b>	<b>18</b>
Tenured	7	7	6	8	7	6	6	6	7	6	0	0	0	0	0	1	1	1	1	1	14	14	13	16	14
Tenure-Track	2	2	2	1	3	1	1	1	0	0	0	0	0	0	0	0	0	0	0	0	3	3	3	1	3
Non Tenure-Track	1	0	0	0	0	0	0	2	0	0	0	0	0	0	0	0	0	0	1	1	1	2	2	1	1

Source: CIO's Office and Institutional Research

\*Includes Academic Department Heads and other Administrators with Faculty Rank but excludes Deans and above

^Effective July 2011, the merge of College of Humanities and Fine Arts and College of Natural Sciences to College of Humanities, Arts and Sciences

## Faculty by College and Rank 2008-2013\*

Fall Semester	Total University	Business	Education	Humanities, Arts and Sciences^	Social and Behavioral Sciences	Continuing Ed No Specific and Library
<b>2008</b>						
Professors	193	19	37	-	35	4
Associate Professors	223	22	49	-	45	15
Assistant Professors	135	10	30	-	23	4
Instructors/Lecturers	305	39	131	-	33	3
<b>2009</b>						
Professors	204	22	38	-	35	4
Associate Professors	221	24	50	-	46	16
Assistant Professors	127	8	25	-	24	4
Instructors/Lecturers	258	26	112	-	25	1
<b>2010</b>						
Professors	198	23	33	-	37	3
Associate Professors	223	25	45	-	48	18
Assistant Professors	122	9	26	-	26	3
Instructors/Lecturers	281	27	112	-	33	3
<b>2011</b>						
Professors	199	24	31	99	42	3
Associate Professors	229	24	43	98	47	17
Assistant Professors	129	12	34	58	20	5
Instructors/Lecturers	275	22	113	95	29	16
<b>2012</b>						
Professors	194	21	32	99	39	3
Associate Professors	225	22	40	97	46	20
Assistant Professors	118	12	32	50	22	2
Instructors/Lecturers	251	23	78	106	28	16
<b>2013</b>						
Professors	198	23	34	95	41	5
Associate Professors	220	19	42	96	47	16
Assistant Professors	122	13	31	54	20	4
Instructors/Lecturers	261	25	80	106	29	21

Source: CIO's Office and Institutional Research

\*Includes Academic Department Heads and other Administrators with Faculty Rank but excludes Deans and above

^Effective July 2011, the merge of College of Humanities and Fine Arts and College of Natural Sciences to College of Humanities, Arts and Sciences

## Faculty by College, Gender and Rank 2009-2013

College	Full-Time										Part-Time										Total				
	09	10	11	12	13	09	10	11	12	13	09	10	11	12	13	09	10	11	12	13	09	10	11	12	13
	F	F	F	F	F	M	M	M	M	M	F	F	F	F	F	M	M	M	M	M					
<b>Faculty</b>	<b>283</b>	<b>270</b>	<b>287</b>	<b>280</b>	<b>285</b>	<b>349</b>	<b>353</b>	<b>359</b>	<b>353</b>	<b>353</b>	<b>96</b>	<b>118</b>	<b>102</b>	<b>118</b>	<b>118</b>	<b>82</b>	<b>83</b>	<b>76</b>	<b>83</b>	<b>83</b>	<b>810</b>	<b>824</b>	<b>824</b>	<b>791</b>	<b>801</b>
Professors	45	37	38	47	52	137	136	136	136	136	10	13	8	13	13	12	12	12	12	12	204	198	194	197	198
Associate Professors	95	98	99	98	98	115	113	118	113	113	5	5	6	5	5	6	7	8	7	7	221	223	231	223	220
Assistant Professors	61	56	67	56	56	62	64	65	64	64	2	0	0	0	0	2	2	1	2	2	127	122	133	119	122
Instructors/Lecturers	82	79	83	79	79	35	40	40	40	40	79	100	88	100	100	62	62	55	62	62	258	281	266	252	261
<b>Business Administration</b>	<b>18</b>	<b>18</b>	<b>18</b>	<b>18</b>	<b>18</b>	<b>40</b>	<b>45</b>	<b>47</b>	<b>48</b>	<b>46</b>	<b>7</b>	<b>7</b>	<b>6</b>	<b>7</b>	<b>9</b>	<b>15</b>	<b>14</b>	<b>11</b>	<b>5</b>	<b>7</b>	<b>80</b>	<b>84</b>	<b>82</b>	<b>78</b>	<b>80</b>
Professors	2	2	2	2	3	19	20	19	18	19	1	1	1	0	0	0	0	2	1	1	22	23	24	21	23
Associate Professors	8	8	8	7	6	16	17	15	15	13	0	0	0	0	0	0	0	1	0	0	24	25	24	22	19
Assistant Professors	3	3	3	4	5	3	4	8	8	8	0	0	0	0	0	2	2	1	0	0	8	9	12	12	13
Instructors/Lecturers	5	5	5	5	4	2	4	5	7	6	6	6	5	7	9	13	12	7	4	6	26	27	22	23	25
<b>Education</b>	<b>107</b>	<b>99</b>	<b>106</b>	<b>91</b>	<b>89</b>	<b>66</b>	<b>62</b>	<b>66</b>	<b>51</b>	<b>51</b>	<b>36</b>	<b>40</b>	<b>35</b>	<b>24</b>	<b>28</b>	<b>16</b>	<b>15</b>	<b>14</b>	<b>16</b>	<b>19</b>	<b>225</b>	<b>216</b>	<b>221</b>	<b>182</b>	<b>187</b>
Professors	9	8	8	11	11	21	17	16	14	14	7	6	4	4	5	1	2	3	3	4	38	33	31	32	34
Associate Professors	27	24	23	23	23	17	14	15	13	15	4	4	3	1	1	2	3	2	3	3	50	45	43	40	42
Assistant Professors	18	16	22	21	21	6	10	12	11	10	1	0	0	0	0	0	0	0	0	0	25	26	34	32	31
Instructors/Lecturers	53	51	53	36	34	22	21	23	13	12	24	30	28	19	22	13	10	9	10	12	112	112	113	78	80
<b>Humanities, Arts and Sciences<sup>^</sup></b>	<b>0</b>	<b>0</b>	<b>107</b>	<b>104</b>	<b>109</b>	<b>0</b>	<b>0</b>	<b>170</b>	<b>157</b>	<b>153</b>	<b>0</b>	<b>0</b>	<b>38</b>	<b>49</b>	<b>46</b>	<b>0</b>	<b>0</b>	<b>35</b>	<b>42</b>	<b>43</b>	<b>0</b>	<b>0</b>	<b>350</b>	<b>352</b>	<b>351</b>
Professors	-	-	20	23	24	-	-	72	64	63	-	-	1	2	1	-	-	6	10	7	-	-	99	99	95
Associate Professors	-	-	41	35	34	-	-	52	55	56	-	-	2	4	2	-	-	3	3	4	-	-	98	97	96
Assistant Professors	-	-	24	25	30	-	-	34	25	24	-	-	0	0	0	-	-	0	0	0	-	-	58	50	54
Instructors/Lecturers	-	-	22	21	21	-	-	12	13	10	-	-	35	43	43	-	-	26	29	32	-	-	95	106	106



## Faculty by College, Gender and Rank 2009-2013\* (Continued)

College	Full-Time					Part-Time					Total														
	09	10	11	12	13	09	10	11	12	13	09	10	11	12	13	09	10	11	12	13					
	F	F	F	F	F	M	M	M	M	M	F	F	F	F	F	M	M	M	M	M	F	F	F	F	F
<b>Social and Behavioral Sciences</b>	<b>41</b>	<b>44</b>	<b>45</b>	<b>46</b>	<b>46</b>	<b>65</b>	<b>63</b>	<b>62</b>	<b>62</b>	<b>63</b>	<b>12</b>	<b>22</b>	<b>17</b>	<b>18</b>	<b>17</b>	<b>12</b>	<b>15</b>	<b>14</b>	<b>9</b>	<b>11</b>	<b>130</b>	<b>144</b>	<b>138</b>	<b>135</b>	<b>137</b>
Professors	9	7	11	12	12	25	27	27	26	28	0	2	2	1	1	1	1	2	0	0	35	37	42	39	41
Associate Professors	16	19	17	17	19	29	27	28	28	27	1	1	2	1	1	0	1	0	0	0	46	48	47	46	47
Assistant Professors	14	17	15	15	14	10	9	5	6	6	0	0	0	1	0	0	0	0	0	0	24	26	20	22	20
Instructors/Lecturers	2	1	2	2	1	1	0	2	2	2	11	19	13	15	15	11	13	12	9	11	25	33	29	28	29
<b>Continuing Ed &amp; Special Programs</b>	<b>0</b>	<b>0</b>	<b>1</b>	<b>1</b>	<b>1</b>	<b>0</b>	<b>0</b>	<b>3</b>	<b>2</b>	<b>0</b>	<b>0</b>	<b>0</b>	<b>7</b>	<b>6</b>	<b>8</b>	<b>0</b>	<b>0</b>	<b>5</b>	<b>8</b>	<b>11</b>	<b>0</b>	<b>0</b>	<b>16</b>	<b>17</b>	<b>20</b>
Professors	0	0	0	0	0	0	0	0	0	0	0	0	0	0	0	0	0	1	1	0	0	0	1	1	0
Associate Professors	0	0	0	0	0	0	0	0	0	0	0	0	0	0	0	0	0	0	1	0	0	0	0	1	0
Assistant Professors	0	0	0	0	0	0	0	0	0	0	0	0	0	0	0	0	0	0	0	0	0	0	0	0	0
Instructors/Lecturers	0	0	1	1	1	0	0	3	2	0	0	0	7	6	8	0	0	4	6	11	0	0	15	15	20
<b>No Specific</b>	<b>3</b>	<b>3</b>	<b>2</b>	<b>2</b>	<b>4</b>	<b>4</b>	<b>6</b>	<b>5</b>	<b>4</b>	<b>4</b>	<b>0</b>	<b>1</b>	<b>0</b>	<b>0</b>	<b>0</b>	<b>0</b>	<b>0</b>	<b>0</b>	<b>0</b>	<b>0</b>	<b>7</b>	<b>10</b>	<b>7</b>	<b>6</b>	<b>8</b>
Professors	2	1	0	0	2	0	0	0	0	1	0	0	0	0	0	0	0	0	0	0	2	1	0	0	3
Associate Professors	1	1	2	2	2	3	5	4	3	2	0	0	0	0	0	0	0	0	0	0	4	6	6	5	4
Assistant Professors	0	0	0	0	0	1	1	1	1	1	0	0	0	0	0	0	0	0	0	0	1	1	1	1	1
Instructors/Lecturers	0	1	0	0	0	0	0	0	0	0	0	1	0	0	0	0	0	0	0	0	0	2	0	0	0
<b>Library</b>	<b>10</b>	<b>9</b>	<b>8</b>	<b>9</b>	<b>10</b>	<b>7</b>	<b>7</b>	<b>9</b>	<b>7</b>	<b>6</b>	<b>0</b>	<b>0</b>	<b>0</b>	<b>0</b>	<b>0</b>	<b>1</b>	<b>1</b>	<b>1</b>	<b>2</b>	<b>2</b>	<b>18</b>	<b>17</b>	<b>18</b>	<b>18</b>	<b>18</b>
Professors	0	0	0	0	0	2	2	2	2	2	0	0	0	0	0	0	0	0	0	0	2	2	2	2	2
Associate Professors	7	7	6	8	7	4	4	4	5	4	0	0	0	0	0	1	1	1	1	1	12	12	11	14	12
Assistant Professors	2	1	2	1	3	1	1	2	0	0	0	0	0	0	0	0	0	0	0	0	3	2	4	1	3
Instructors/Lecturers	1	1	0	0	0	0	0	1	0	0	0	0	0	0	0	0	0	0	1	1	1	1	1	1	1

Source: CIO's Office and Institutional Research

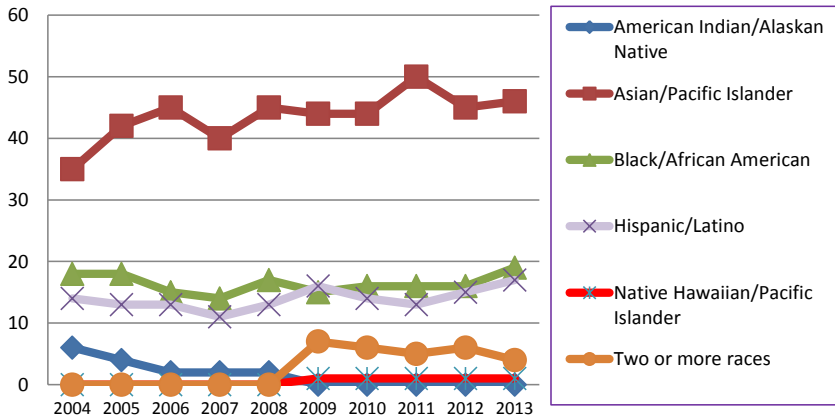
\*Includes Academic Department Heads and other Administrators with Faculty Rank but excludes Deans and above

^Effective July 2011, the merge of College of Humanities and Fine Arts and College of Natural Sciences to College of Humanities, Arts and Sciences

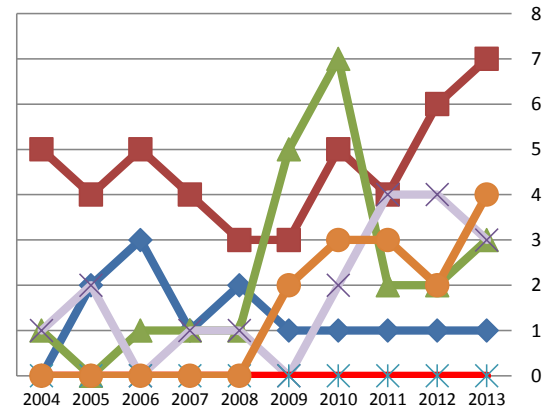
## Minority Faculty By Race/Ethnicity 2004-2013\*

	Full-Time										Part-Time										
	2004	2005	2006	2007	2008	2009	2010	2011	2012	2013	2004	2005	2006	2007	2008	2009	2010	2011	2012	2013	
<b>Total</b>	<b>73</b>	<b>77</b>	<b>75</b>	<b>67</b>	<b>77</b>	<b>83</b>	<b>81</b>	<b>85</b>	<b>83</b>	<b>87</b>	<b>7</b>	<b>8</b>	<b>9</b>	<b>7</b>	<b>7</b>	<b>11</b>	<b>18</b>	<b>14</b>	<b>15</b>	<b>18</b>	
American Indian/Alaskan Native	6	4	2	2	2	0	0	0	0	0	0	2	3	1	2	1	1	1	1	1	1
Asian/Pacific Islander	35	42	45	40	45	44	44	50	45	46	5	4	5	4	3	3	5	4	6	7	7
Black/African American	18	18	15	14	17	15	16	16	16	19	1	0	1	1	1	5	7	2	2	3	3
Hispanic/Latino	14	13	13	11	13	16	14	13	15	17	1	2	0	1	1	0	2	4	4	3	3
Native Hawaiian/Pacific Islander	-	-	-	-	-	1	1	1	1	1	-	-	-	-	-	0	0	0	0	0	0
Two or more races	-	-	-	-	-	7	6	5	6	4	-	-	-	-	-	2	3	3	2	4	4

**Minority Faculty: Full-Time**



**Part-Time**



Source: CIO's Office and Institutional Research

\*Excludes Deans and above

NOTE: The Race/Ethnicity reporting was changed in Fall 2009 semester to implement the new U.S. Department of Education guidelines.

## UNI Workforce by Employment Categories 2003-2013

Categories	2003	2004	2005	2006	2007	2008	2009	2010	2011	2012	2013	5 Yr % Change	10 Yr % Change
	N	N	N	N	N	N	N	N	N	N	N		
Total Workforce**	1,820	1,769	1,776	1,781	1,791	1,890	1,883	1,842	1,894	1,801	1,819	-3.8	-0.1
Annual Percent Change	-0.2	-2.8	0.4	0.3	0.6	5.5	-0.4	-2.2	2.8	-4.9	1.0		
Executive/Managerial	99	98	92	94	102	110	112	98	94	95	93	-15.5	-6.1
Faculty-Tenure/Tenure-Track*	561	533	547	542	536	550	546	546	552	519	525	-4.5	-6.4
Faculty-Term/Renewable Term	-	-	-	-	-	40	40	41	63	37	36	-10.0	-
Professional/Scientific	513	509	521	529	541	570	577	578	603	592	609	6.8	18.7
Secretarial/Clerical	307	293	285	281	277	275	272	256	264	254	249	-9.5	-18.9
Technical/Paraprofessional	25	25	33	31	31	30	27	24	22	20	20	-33.3	-20.0
Skilled Crafts	77	78	68	68	64	63	60	55	55	56	59	-6.3	-23.4
Service/Maintenance	238	233	230	236	240	252	249	244	241	228	228	-9.5	-4.2

Source: *Office of Human Resource Services*

\*\*Excludes temporary and second appointments

\*Excludes some faculty with administrative appointments

NOTE: 2008-2013 data modified to include/separate Faculty-Term/Renewable Term employment category.

## UNI Workforce Headcount and FTE by Employment Categories 2009-2013

Categories	2009		2010		2011		2012		2013	
	N	FTE	N	FTE	N	FTE	N	FTE	N	FTE
Total Workforce**	1,883	1,802.9	1,842	1,754.2	1,894	1,804.5	1,801	1,723.5	1,819	1,739.5
Annual Percent Change		-0.2		-2.7		2.9		-4.5		0.9
Executive/Managerial	112	111.7	98	97.8	94	93.5	95	93.6	93	91.6
Faculty -Tenure/Tenure-Track*	546	526.0	546	520.9	552	533.3	519	504.1	525	509.6
Faculty -Term/Renewable Term*	40	38.4	41	39.5	63	61.3	37	36.0	36	36.0
Professional/Scientific	577	551.9	578	549.4	603	566.9	592	559.5	609	574.1
Secretarial/Clerical	272	252.4	256	240.4	264	249.8	254	241.8	249	236.6
Technical/Paraprofessional	27	26.5	24	23.5	22	21.6	20	19.6	20	19.6
Skilled Crafts	60	60.0	55	55.0	55	54.7	56	55.7	59	58.7
Service/Maintenance	249	236.0	244	227.7	241	223.4	228	213.2	228	213.3

Source: Office of Human Resource Services

\*\*Excludes temporary

\*Excludes some faculty with administrative appointments

## UNI Temporary Workforce Headcount and FTE by Employment Categories 2009-2013

Categories	2009		2010		2011		2012		2013	
	N	FTE	N	FTE	N	FTE	N	FTE	N	FTE
Total Temporary Workforce**	367	174.5	418	198.3	378	184.2	365	189.6	373	185.0
Executive/Managerial	0	0.0	0	0.0	0	0.0	0	0.0	0	0.0
Faculty -Tenure/Tenure-Track*	189	105.5	214	118.4	193	108.5	200	118.1	217	127.7
Professional/Scientific	80	49.2	102	59.1	94	58.0	74	49.2	67	37.1
Merit Temporary Total**	98	19.8	102	20.8	91	17.7	91	22.3	89	20.2
<i>Merit Temporary</i>			102	20.8	91	17.7	91	22.3	89	20.2
Secretarial/Clerical			12	4.4	3	1.6	7	3.3	5	0.7
Technical/Paraprofessional			5	3.8	1	0.2	0	0.0	0	0.0
Skilled Crafts			0	0.0	0	0.0	0	0.0	0	0.0
Service/Maintenance			85	12.6	87	15.9	84	19.0	84	19.5

Source: Office of Human Resource Services

\*Excludes some faculty with administrative appointments

\*\*Prior to 2010 all temporary Merit positions were classified as "Merit Temporary"

## UNI Workforce by Race/Ethnicity 2007-2013

Categories	2007		2008		2009		2010		2011		2012		2013	
	N	%	N	%	N	%	N	%	N	%	N	%	N	%
Total Workforce**	1,791		1,850		1,846		1,811		1,894		1,801		1,819	
Annual Percent Change		0.6		3.3		-0.2		-1.9		4.6		-4.9		1.0
American Indian/Alaskan Native	7	0.4	7	0.4	5	0.3	3	0.2	3	0.2	3	0.2	3	0.2
Asian/Pacific Islander	52	2.9	54	2.9	54	2.9	57	3.1	62	3.3	59	3.3	60	3.3
Black/African American	77	4.3	79	4.3	75	4.1	79	4.4	83	4.4	83	4.6	82	4.5
Hispanic/Latino	26	1.5	30	1.6	32	1.7	34	1.9	35	1.8	37	2.1	38	2.1
White	1,629	91.0	1,680	90.8	1,669	90.4	1,627	89.8	1,701	89.8	1,610	89.4	1,627	89.4
Native Hawaiian/Pacific Islander	-	-	-	-	1	0.1	1	0.1	1	0.1	1	0.1	1	0.1
Two or more	-	-	-	-	10	0.5	10	0.6	9	0.5	8	0.4	8	0.4
Unknown	0	0.0	0	0.0	0	0.0	0	0.0	0	0.0	0	0.0	0	0.0

Source: Office of Human Resource Services

\*\*Excludes temporary and second appointments

NOTE: Fall 2009 semester Race/Ethnicity reporting was changed to implement the U.S. Department of Education guidelines.

## UNI Workforce by Employment Categories and Race/Ethnicity Fall 2013

Fall 2013	American Indian/ Alaskan Native	Asian	Black/ African American	Hispanic	White	Native Hawaiian/ Pacific Islander	Two or more	Total
Total Workforce**	3	60	82	38	1,627	1	0	1,819
Executive/Managerial	0	2	7	0	84	0	0	93
Faculty-Tenure/Tenure-Track*	1	44	12	16	448	1	3	525
Faculty-Term/Renewable Term*	0	1	1	0	34	0	0	36
Professional/Scientific	1	7	29	15	552	0	5	609
Secretarial/Clerical	0	1	11	1	236	0	0	249
Technical/Paraprofessional	0	0	2	1	17	0	0	20
Skilled Crafts	0	1	1	0	57	0	0	59
Service/Maintenance	1	4	19	5	199	0	0	228

Source: Office of Human Resource Services

\*\*Excludes temporary and second appointments

\*Excludes some faculty with administrative appointments

## UNI Workforce Headcount and FTE by Employment Categories and College Fall 2013

	Total University		Business		Education		Humanities, Arts and Sciences		Social and Behavioral Sciences		No specific College	
	N	FTE	N	FTE	N	FTE	N	FTE	N	FTE	N	FTE
	<b>Total Workforce**</b>	<b>1,819</b>	<b>1,739.5</b>	<b>121</b>	<b>118.0</b>	<b>246</b>	<b>228.6</b>	<b>359</b>	<b>342.8</b>	<b>141</b>	<b>136.1</b>	<b>952</b>
Executive/ Managerial	93	91.6	6	6.0	4	4.0	20	20.0	9	9.0	54	52.6
Faculty-Tenure/ Tenure-Track*	525	509.6	51	50.5	129	123.7	229	221.7	101	99.3	15	14.5
Faculty-Term/ Renewable Term*	36	36.0	10	10.0	15	15.0	10	10.0	1	1.0	0	0.0
Professional/ Scientific	609	574.1	42	39.7	66	56.7	64	56.1	14	12.4	423	409.3
Secretarial/ Clerical	249	236.6	10	9.8	29	26.8	31	30.2	16	14.5	163	155.3
Technical/ Paraprofessional	20	19.6	2	2.0	1	0.9	3	2.8	0	0.0	14	13.9
Skilled Crafts	59	58.7	0	0.0	0	0.0	0	0.0	0	0.0	59	58.7
Service/ Maintenance	228	213.3	0	0.0	2	1.5	2	2.0	0	0.0	224	209.8

Source: Office of Human Resource Services

\*\*Excludes temporary

\*Excludes some faculty with administrative appointments



## UNI Workforce by Employment Categories, Gender and College Fall 2013

Fall 2013	Total University		Business		Education		Humanities, Arts and Sciences		Social and Behavioral Sciences		No specific College	
	F	M	F	M	F	M	F	M	F	M	F	M
	<b>Total Workforce**</b>	<b>1,023</b>	<b>796</b>	<b>49</b>	<b>72</b>	<b>174</b>	<b>72</b>	<b>166</b>	<b>193</b>	<b>71</b>	<b>70</b>	<b>563</b>
Executive/ Managerial	41	52	3	3	2	2	4	16	4	5	28	26
Faculty-Tenure/ Tenure-Track*	232	293	11	40	81	48	89	140	44	57	7	8
Faculty-Term/ Renewable Term	21	15	4	6	9	6	7	3	1	0	0	0
Professional/ Scientific	361	248	21	21	53	13	35	29	7	7	245	178
Secretarial/ Clerical	243	6	10	0	28	1	31	0	15	1	159	4
Technical/ Paraprofessional	5	15	0	2	1	0	0	3	0	0	4	10
Skilled Crafts	3	56	0	0	0	0	0	0	0	0	3	56
Service/ Maintenance	117	111	0	0	0	2	0	2	0	0	117	107

Source: Office of Human Resource Services

\*\*Excludes temporary and second appointments

\*Excludes some faculty with administrative appointments

## UNI Workforce by Employment Categories, Level and College Fall 2013

Fall 2013	Total University		Business		Education		Humanities, Arts and Sciences		Social and Behavioral Sciences		No specific College			
	F-T	P-T	F-T	P-T	F-T	P-T	F-T	P-T	F-T	P-T	F-T	P-T		
<b>Total Workforce**</b>	<b>1,680</b>	<b>139</b>	<b>114</b>	<b>7</b>	<b>212</b>	<b>34</b>		<b>326</b>	<b>33</b>		<b>131</b>	<b>10</b>	<b>897</b>	<b>55</b>
Executive/ Managerial	89	4	6	0	4	0		20	0		9	0	50	4
Faculty-Tenure/ Tenure-Track*	492	33	50	1	115	14		215	14		98	3	14	1
Faculty-Term/ Renewable Term*	36	0	10	0	15	0		10	0		1	0	0	0
Professional/ Scientific	555	54	37	5	52	14		48	16		12	2	406	17
Secretarial/ Clerical	217	32	9	1	24	5		29	2		11	5	144	19
Technical/ Paraprofessional	19	1	2	0	1	0		2	1		0	0	14	0
Skilled Crafts	58	1	0	0	0	0		0	0		0	0	58	1
Service/ Maintenance	214	14	0	0	1	1		2	0		0	0	211	13

Source: Office of Human Resource Services

\*\*Excludes temporary and second appointments

\*Excludes some faculty with administrative appointments

## UNI Workforce by Employment Categories, Level and Gender Fall 2013

Fall 2013	Total University		Female		Male	
	F-T	P-T	F-T	P-T	F-T	P-T
<b>Total Workforce**</b>	<b>1,680</b>	<b>139</b>	<b>926</b>	<b>97</b>	<b>754</b>	<b>42</b>
Executive/ Managerial	89	4	40	1	49	3
Faculty-Tenure/ Tenure-Track*	492	33	218	14	274	19
Faculty-Term/ Renewable Term*	36	0	21	0	15	0
Professional/ Scientific	555	54	318	43	237	11
Secretarial/ Clerical	217	32	212	31	5	1
Technical/ Paraprofessional	19	1	5	0	14	1
Skilled Crafts	58	1	3	0	55	1
Service/ Maintenance	214	14	109	8	105	6

Source: Office of Human Resource Services

\*\*Excludes temporary and second appointments

\*Excludes some faculty with administrative appointments



# Budget & Finance



# Budget & Finance

## Statement of Revenues, Expenses and Changes In Net Assets, 2008-2013

	2008	2009	2010	2011	2012	2013
<b>OPERATING REVENUES</b>						
Tuition & Fees	\$73,394,127	\$77,260,450	\$81,866,942	\$87,554,233	\$91,725,487	\$90,441,952
Less Scholarship Allowance	-15,870,780	-17,226,327	-21,202,125	-24,139,088	-25,482,683	-25,334,812
Net Tuition & Fees	\$57,523,347	\$60,034,123	\$60,664,817	\$63,415,145	\$66,242,804	\$65,107,140
Receipts from Other Entities	143,924	241,941	111,554	120,433	111,978	119,360
Grants and Contracts	32,073,018	36,708,661	42,493,448	42,887,829	39,370,649	34,938,344
Sales, Rents and Services	7,420,630	5,774,668	7,687,525	7,998,091	8,237,789	4,937,703
Miscellaneous	720,116	607,771	2,868,615	992,772	501,925	726,808
Auxiliary Enterprises	50,176,930	54,859,014	55,193,227	56,156,143	58,742,116	56,344,034
<b>Total Operating Revenues</b>	<b>\$148,057,965</b>	<b>\$158,226,178</b>	<b>\$169,019,186</b>	<b>\$171,570,413</b>	<b>\$173,207,261</b>	<b>\$162,173,389</b>
<b>OPERATING EXPENSES</b>						
Instruction	\$72,605,101	\$76,484,933	\$71,168,267	\$78,570,575	\$80,291,964	\$82,764,796
Research	2,454,770	1,793,393	2,507,353	3,106,240	2,951,957	3,138,471
Public Service	24,184,724	31,097,013	31,497,042	25,396,214	22,152,465	24,325,404
Academic Support	22,050,064	22,729,813	23,894,367	25,413,636	24,855,928	21,731,295
Student Services	6,558,084	7,076,945	6,205,098	7,280,432	8,210,073	9,005,372
Institutional Support	20,230,830	29,348,125	26,713,928	23,535,960	29,683,285	26,441,182
Operation and Maintenance of Plant	21,396,250	22,185,917	20,177,365	21,884,211	20,441,078	21,423,526
Scholarships and Fellowships	4,884,137	5,712,482	6,760,209	7,150,385	6,470,804	4,983,383
Depreciation	13,291,606	13,975,476	14,461,097	15,270,614	16,105,032	16,095,251
Loan Cancellations and Write-offs	251,886	513,815	172,245	137,397	288,141	281,264
Auxiliary Enterprises	49,043,443	50,077,862	48,447,239	48,858,614	50,787,350	50,975,515
<b>Total Operating Expenses</b>	<b>\$236,950,895</b>	<b>\$260,995,774</b>	<b>\$252,004,210</b>	<b>\$256,604,278</b>	<b>\$262,238,077</b>	<b>\$261,165,459</b>
Operating (Loss)	(88,892,930)	(102,769,596)	(82,985,024)	(85,033,865)	(89,030,816)	(98,992,070)

## Statement of Revenues, Expenses and Changes In Net Assets, 2007-2013\* (Continued)

	2008	2009	2010	2011	2012	2013
<b>NON-OPERATING REVENUES</b>						
<b>(EXPENSES)</b>						
State Appropriations	\$95,363,638	\$101,686,218	\$97,861,782	82,683,919	77,765,014	87,662,815
Investment Return	1,687,404	-611,282	2,990,195	3,023,277	1,921,916	1,710,232
Gifts, Grants and Contracts	2,600,605	3,384,744	3,332,794	3,179,412	3,701,740	3,101,932
Interest Expense	-5,765,266	-5,742,508	-6,274,646	-5,924,235	-6,258,688	-5,529,028
Amortization Expense	-94,140	-101,839	-109,855	-133,446	-146,849	-161,574
Miscellaneous Expense	-29,950	-22,289	-6,850	0	-118,360	-2,381,912
<b>Net Non-Operating Revenue</b>	<u>\$93,762,291</u>	<u>\$98,593,044</u>	<u>\$97,793,420</u>	<u>\$82,828,927</u>	<u>\$76,864,773</u>	<u>\$84,402,465</u>
<b>(Expenses)</b>						
<b>(Loss) Before Other Revenues</b>	<u>\$4,869,361</u>	<u>-\$4,176,552</u>	<u>\$14,808,396</u>	<u>-\$2,204,938</u>	<u>-\$12,166,043</u>	<u>-\$14,589,605</u>
State Appropriations – Capital Projects	\$5,018,136	\$5,751,912	\$5,927,801	\$5,808,082	\$7,016,578	\$14,082,733
Capital Contributions and Grants	4,117,894	9,845,582	5,164,996	3,412,442	1,913,243	1,193,696
<b>Total Other Revenues</b>	<u>\$9,136,030</u>	<u>\$15,597,494</u>	<u>\$11,092,797</u>	<u>\$9,220,524</u>	<u>\$8,929,821</u>	<u>\$15,276,429</u>
<b>Change in Net Assets</b>	<u>\$14,005,391</u>	<u>\$11,420,942</u>	<u>\$25,901,193</u>	<u>\$7,015,586</u>	<u>(\$3,236,222)</u>	<u>\$686,824</u>
<b>NET ASSETS</b>						
Total Net Assets – July 1	\$273,207,498	\$287,212,889	\$298,633,831	\$324,535,024	\$331,550,610	\$328,314,388
Total Net Assets – June 30	<u>\$287,212,889</u>	<u>\$298,633,831</u>	<u>\$324,535,024</u>	<u>\$331,550,610</u>	<u>\$328,314,388</u>	<u>\$329,001,212</u>

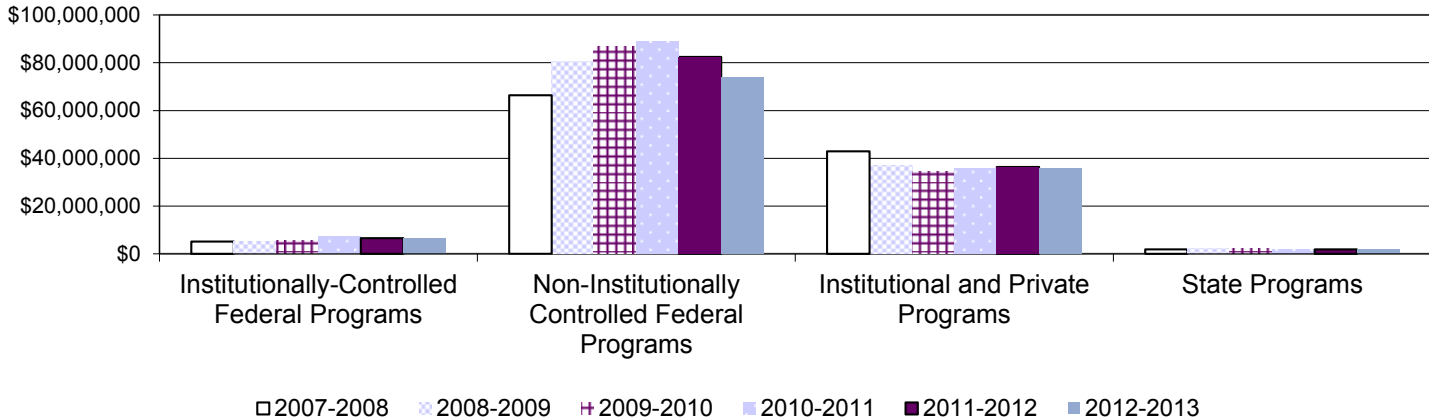
Source: *Financial Accounting and Reporting Services*

\*Fiscal year runs July 1 through June 30.

## Financial Aid Programs by Source of Aid 2007-2008 to 2012-2013

	2007-2008	2008-2009	2009-2010	2010-2011	2011-2012	2012-2013	1 Yr % Change	5 Yr % Change
<b>TOTAL</b>	\$116,186,986	\$124,372,381	\$128,829,476	\$133,627,082	\$127,078,624	\$117,518,136	-7.5%	1.1%
Institutionally-Controlled Federal Programs	\$5,089,322	\$4,967,660	\$5,480,750	\$7,181,829	\$6,519,982	\$6,266,832	-3.9%	23.1%
Non-Institutionally Controlled Federal Programs	\$66,386,640	\$80,337,778	\$86,925,180	\$88,875,504	\$82,439,618	\$73,783,596	-10.5%	11.1%
Institutional and Private Programs	\$42,910,360	\$36,737,956	\$34,287,847	\$35,871,303	\$36,323,315	\$35,737,813	-1.6%	-16.7%
State Programs	\$1,800,664	\$2,328,987	\$2,135,699	\$1,698,446	\$1,795,709	\$1,729,895	-3.7%	-3.9%

Source of Financial Aid  
2006 through 2013



Source: Financial Aid Office



## Student Financial Aid Programs 2010-2011 to 2012-2013

	2010-2011			2011-2012			2012-2013		
	Number of Awards	Value of Awards	Mean Award	Number of Awards	Value of Awards	Mean Award	Number of Awards	Value of Awards	Mean Award
<b>TOTAL</b>	40,698	\$133,627,082	\$3,283	41,225	\$127,078,624	\$3,083	39,109	\$117,515,136	\$3,005
<b>Institutional &amp; Private Gift Aid</b>	11,525	\$22,032,732	\$1,912	12,497	\$22,008,551	\$1,761	12,745	\$21,797,657	\$1,710
Institutional Scholarships/Grants	7,952	12,649,911	\$1,591	8,129	13,646,797	\$1,679	8,127	13,081,900	\$1,610
Corporate/Private Scholarships	3,193	6,382,805	\$1,999	4,065	5,054,651	\$1,243	4,314	5,427,306	\$1,258
Athletic Scholarships	380	3,000,016	\$7,895	303	3,307,103	\$10,915	304	3,288,451	\$10,817
<b>Federal &amp; State Grants</b>	662	\$18,349,476	\$2,771	5,641	\$17,322,672	\$3,071	5,343	\$16,510,080	\$3,090
Federal Pell Grant	3,386	12,193,939	\$3,601	3,219	11,439,862	\$3,554	3,022	10,867,166	\$3,596
Academic Competitiveness Grant	728	583,611	\$802	0	0	-	0	0	-
National SMART Grant	168	505,745	\$3,010	0	0	-	0	0	-
Supplemental Education Opportunity Grant	480	433,756	\$904	478	433,756	\$907	473	433,623	\$917
TEACH Grant	414	1,572,048	\$3,797	643	2,433,576	\$3,785	624	2,280,838	\$3,655
ROTC	5	38,839	\$7,768	4	34,616	\$8,654	5	47,409	\$9,482
Other Federal Grant/Scholarship Programs	686	1,369,632	\$1,997	537	1,236,721	\$2,303	440	1,151,149	\$2,616
All Iowa Opportunity Scholarship	31	205,955	\$6,644	46	318,817	\$6,931	43	302,975	\$7,046
IMAGES Grant	191	333,158	\$1,744	193	332,200	\$1,721	197	332,200	\$1,686
Iowa Grant	117	102,442	\$876	107	98,804	\$923	110	88,877	\$808
Vocational Rehabilitation	169	366,416	\$2,168	140	317,356	\$2,267	143	334,376	\$2,338
Commission for the Blind	1	8,001	\$8,001	2	3,916	\$1,958	3	20,758	\$6,919
Other State Grants	175	296,551	\$1,695	174	165,035	\$948	191	160,235	\$839
National Guard	71	339,383	\$4,780	98	508,013	\$5,184	92	490,474	\$5,331
<b>Loans</b>	17,665	\$81,239,021	\$4,599	18,346	\$75,548,219	\$4,118	16,471	\$67,869,840	\$4,121
Federal Perkins	909	1,731,175	\$1,904	1,012	1,637,939	\$1,619	943	1,670,957	\$1,772
Direct Loans	16,251	76,529,612	\$4,709	16,839	70,887,684	\$4,210	14,965	62,792,219	\$4,196
Alternative Loans	505	2,978,234	\$5,897	495	3,022,596	\$6,106	563	3,406,664	\$6,051
<b>Employment</b>	4,765	\$11,460,346	\$2,405	4,741	\$12,199,182	\$2,573	4,550	\$11,337,559	\$2,492
Federal Work Study	537	821,861	\$1,530	433	613,605	\$1,417	465	679,876	\$1,462
Iowa Work Study	0	0	-	0	0	\$0	0	0	-
Graduate Teaching, Research Assistantships	399	2,409,747	\$6,039	376	2,318,523	\$6,166	359	2,384,267	\$6,641
UNI Employment	3,950	8,774,245	\$2,221	3,932	9,267,054	\$2,357	3,726	8,273,416	\$2,220

Source: Financial Aid Office

## Full-Time Undergraduate Student Tuition and Fees 1994-2013\*

Academic Year	Academic Services	Activity	Athletics	Computing/ Technology	Facilities	General Student Services	Health Services	Health Facility	Health Surcharge	Total Mandatory Fees	UG Tuition	Total Tuition & Mandatory Fees
1994-95				\$84			\$80			\$164	\$2,291	\$2,455
1995-96				\$88			\$84			\$172	\$2,386	\$2,558
1996-97				\$92			\$88			\$180	\$2,470	\$2,650
1997-98				\$96			\$90			\$186	\$2,566	\$2,752
1998-99				\$100			\$94			\$194	\$2,666	\$2,860
1999-00				\$104			\$98			\$202	\$2,786	\$2,988
2000-01				\$122			\$102			\$224	\$2,906	\$3,130
2001-02		\$92		\$126			\$106			\$324	\$3,116	\$3,440
2002-03		\$174		\$140			\$112			\$426	\$3,692	\$4,118
2003-04				\$150	\$180	\$102	\$116	\$26		\$574	\$4,342	\$4,916
2004-05				\$165	\$180	\$190	\$124	\$26		\$685	\$4,702	\$5,387
2005-06				\$116	\$198	\$222	\$144	\$32		\$712	\$4,890	\$5,602
2006-07				\$178	\$232	\$231	\$152	\$33	\$200	\$1,026	\$5,086	\$6,112
2007-08				\$187	\$237	\$223	\$158	\$33		\$838	\$5,352	\$6,190
2008-09				\$193	\$237	\$227	\$162	\$33		\$852	\$5,524	\$6,376
2009-10		\$35		\$200	\$235	\$215	\$166	\$29	\$100	\$980	\$5,756	\$6,736
2010-11		\$45		\$212	\$235	\$213	\$172	\$29		\$906	\$6,102	\$7,008
2011-12		\$60		\$229	\$235	\$213	\$176	\$29		\$942	\$6,408	\$7,350
2012-13		\$65		\$252	\$235	\$217	\$189	\$29		\$987	\$6,648	\$7,635
2013-14		\$67		\$258	\$220	\$258	\$203	\$31		\$1,037	\$6,648	\$7,685

Source: Office of the Registrar

\*All Non-College of Business Administration Resident Students

## Full-Time Graduate Student Tuition and Fees 1994-2013\*

Academic Year	Academic Services	Activity	Athletics	Computing/ Technology	Facilities	General Student Services	Health Services	Health Facility	Surcharge	Total Mandatory Fees	Grad Tuition	Total Tuition & Mandatory Fees
1994-95				\$84			\$80			\$164	\$2,655	\$2,819
1995-96				\$88			\$84			\$172	\$2,834	\$3,006
1996-97				\$92			\$88			\$180	\$2,932	\$3,112
1997-98				\$96			\$90			\$186	\$3,046	\$3,232
1998-99				\$100			\$94			\$194	\$3,166	\$3,360
1999-00				\$104			\$98			\$202	\$3,308	\$3,510
2000-01				\$122			\$102			\$224	\$3,452	\$3,676
2001-02		\$92		\$126			\$106			\$324	\$3,702	\$4,026
2002-03		\$174		\$140			\$112			\$426	\$4,388	\$4,814
2003-04				\$150	\$180	\$102	\$116	\$26		\$574	\$5,038	\$5,612
2004-05				\$165	\$180	\$190	\$124	\$26		\$685	\$5,488	\$6,173
2005-06				\$116	\$198	\$222	\$144	\$32		\$712	\$5,708	\$6,420
2006-07				\$178	\$232	\$231	\$152	\$33	\$200	\$1,026	\$5,936	\$6,962
2007-08				\$187	\$237	\$223	\$158	\$33		\$838	\$6,246	\$7,084
2008-09				\$193	\$237	\$227	\$162	\$33		\$852	\$6,446	\$7,298
2009-10		\$35		\$200	\$235	\$215	\$166	\$29	\$100	\$980	\$6,716	\$7,696
2010-11		\$45		\$212	\$235	\$213	\$172	\$29		\$906	\$7,120	\$8,026
2011-12		\$60		\$229	\$235	\$213	\$176	\$29		\$942	\$7,476	\$8,418
2012-13		\$65		\$252	\$235	\$217	\$189	\$29		\$987	\$7,756	\$8,743
2012-13		\$67		\$258	\$220	\$258	\$203	\$31		\$1,037	\$7,756	\$8,793

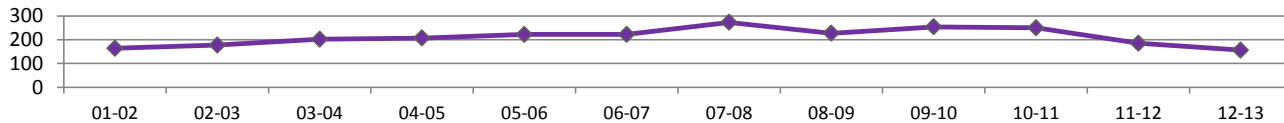
Source: Office of the Registrar

\*Resident Student

## Sponsored Project Proposals and Awards 2001-2013\*

Fiscal Year	Proposals (P)		Awards (A)	
	N	Amount (\$)	N	Amount (\$)
2001-02	213	31,687,716	164	23,400,612
2002-03	231	40,056,854	177	28,835,568
2003-04	288	37,183,501	202	22,226,432
2004-05	257	44,271,909	207	32,203,943
2005-06	296	47,263,423	222	33,071,632
2006-07	280	41,819,467	222	27,003,729
2007-08	352	42,777,178	273	37,101,834
2008-09	273	56,854,498	227	45,767,242
2009-10	365	53,717,963	254	39,754,021
2010-11	353	56,922,612	250	42,018,391
2011-12	227	42,435,603	185	38,326,824
2012-13	220	46,942,575	156	41,181,950

### Awards



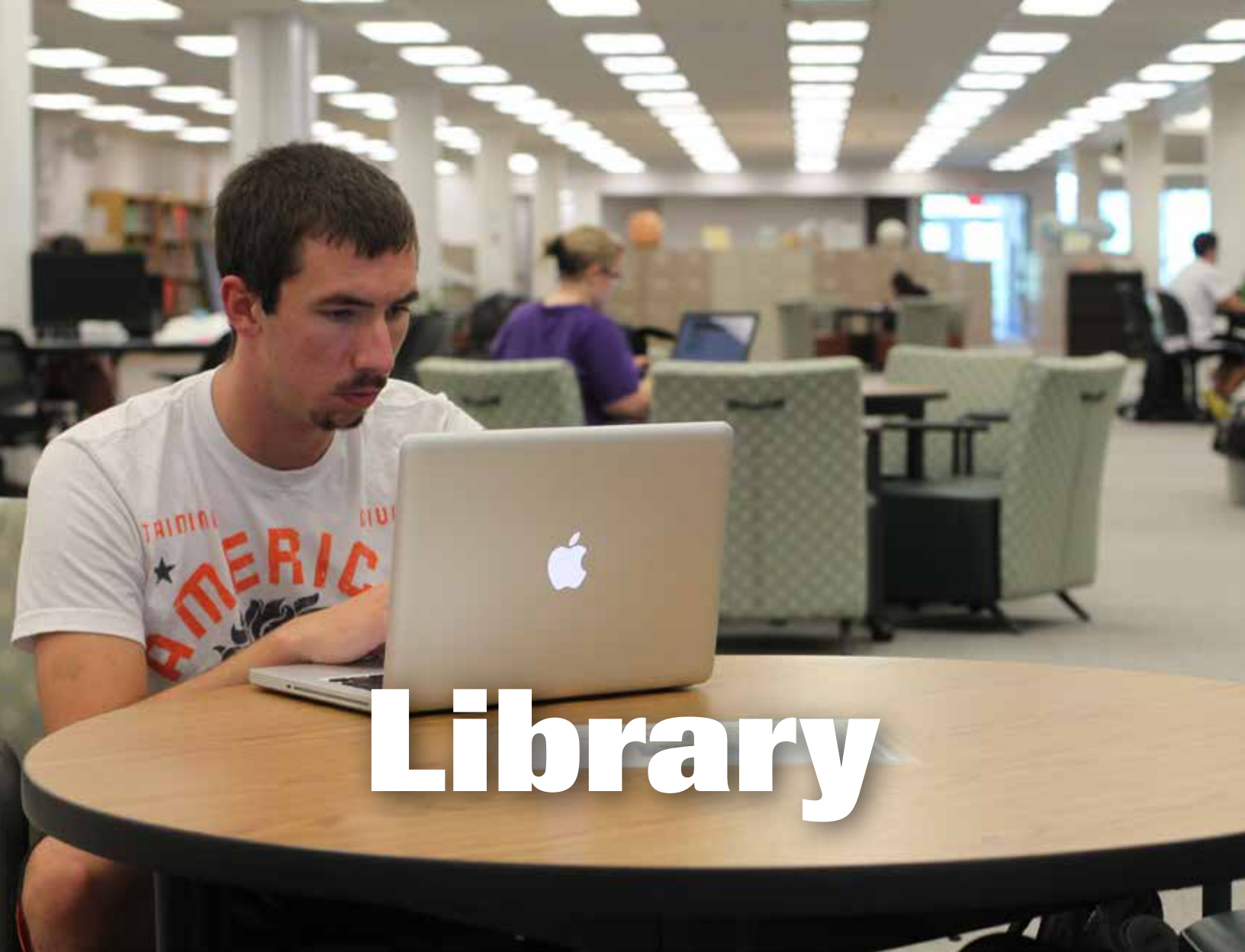
Source: *Sponsored Programs*

\*Excluding Student Financial Aid, includes Amendments

\*\*Starting 2012-2013, amount includes UNI Foundation awards



# Library



**Library**

## Library Statistics: 2008-2013

	2008	2009	2010	2011	2012	2013
<b>PERSONNEL – FTE</b>						
Library Faculty	19	19	19	19	20	18
Library Associates	11	12	11	11	11	11
Library Staff	25	24	24	24	21	20
Student Assistants	19	19	18	17	16	16
<b>HOLDINGS/ACCESS</b>						
Books	793,864	797,078	800,239	797,883	799,353	784,462
Periodicals	187,846	189,843	176,076	175,348	176,824	176,236
Electronic Books	32,780	39,022	46,304	77,877	14,245	205,638
Electronic Journals	30,879	44,174	44,350	52,924	50,909	59,434
Maps (sheets and folded)	41,291	41,453	41,425	41,438	41,567	40,949
Government Documents (all)						
Paper	263,226	265,026	262,832	252,048	230,393	202,254
Microform	301,813	303,034	303,508	303,085	302,709	301,405
CD/DVD/Floppy	3,832	3,369	3,416	3,425	3,430	2,416
Subscriptions						
Periodicals (paper, w/ newspapers)	2,171	2,051	1,534	1,494	1,237	1,188
Periodicals (electronic, w/ newspapers)	1,390	1,231	1,527	1,590	1,198	1,114
Databases	175	148	140	96	123	151
Audiovisuals						
Sound recordings	16,100	16,797	17,330	17,923	18,155	18,516
Films and Videotapes	5,393	6,563	6,864	7,954	8,393	9,116
Other nonprint materials	9,711	9,663	9,583	9,583	3,634	2,946

## Library Statistics: 2008 - 2013 (Continued)

	2008	2009	2010	2011	2012	2013
Microform Units (not govt. docs.)						
Microfilm	29,570	29,754	29,917	29,799	29,975	30,133
Microfiche	773,761	774,089	774,574	774,279	774,726	775,198
Microcards	17,076	17,076	17,076	17,076	17,076	17,076
Archives & Manuscripts (linear feet)	4,986	5,033	5,114	5,265	5,329	5,616
<b>SERVICES</b>						
Building Entrance Count	466,476	460,455	487,375	495,971	519,307	446,840
Circulation (first time loans)	166,508	166,380	161,881	140,130	134,571	104,980
Reference Transactions (all)	11,318	11,714	12,433	12,217	12,994	10,916
Interlibrary Loan						
Borrowed	5,776	5,641	5,055	4,357	3,847	3,691
Loaned	6,476	6,291	6,399	5,663	5,203	4,806
Library Instruction						
Classes	284	330	295	300	336	316
Persons served	6,020	7,465	6,128	6,746	6,400	5,725
Document Delivery						
On Campus	1,093	914	*	*	*	*
Off Campus	702	784	573	377	649	498

Source: *The Rod Library*

\*Statistic No Longer Captured





# General Information



# General Information

## International Students by Country: Fall 2013\*

<b>Country</b>	<b>N</b>	<b>Country</b>	<b>N</b>	<b>Country</b>	<b>N</b>	<b>Country</b>	<b>N</b>
Albania	1	Guinea-Bissau	1	Nigeria	5	Zambia	2
Armenia	1	Hong Kong	19	Norway	1	Zimbabwe	2
Australia	2	Hungary	1	Pakistan	4		
Austria	2	India	19	Peru	2		
Bahamas	1	Indonesia	1	Phillippines	1		
Bangladesh	2	Iran	1	Poland	1		
Belgium	1	Israel	1	Qatar	1		
Bosnia & Herzegovina	1	Japan	14	Russia	11		
Brazil	5	Jordan	1	Rwanda	3		
Cameroon	1	Kenya	2	Saudi Arabia	183		
Canada	7	Korea, Democratic Peop	1	Sierre Leone	1		
Chile	6	Korea, Republic of	9	Singapore	2		
China	127	Kuwait	1	Spain	1		
Columbia	2	Kyrgyzstan	1	Syrian Arab Republic	1		
Egypt	3	Malaysia	13	Taiwan	2		
El Salvador	2	Mali	1	Tajikistan	1		
Ethiopia	2	Mexico	7	Turkey	2		
France	5	Namibia	1	United Kingdom	4	<b>TOTAL</b>	<b>520</b>
Georgia	1	Nepal	8	Venezuela	2		
Germany	4	New Zealand	2	Vietnam	8	<b>Number of Countries</b>	<b>62</b>

Source: Office of the Registrar

\*Includes undergraduates and graduates

## International Students by College 2007-2013\*

College	2007	2008	2009	2010	2011	2012	2013	1 Yr % Change	5 Yr % Change
<b>TOTAL</b>	<b>472</b>	<b>464</b>	<b>453</b>	<b>480</b>	<b>488</b>	<b>454</b>	<b>520</b>	14.5	-3.8
Annual Percent Change	9.3	-1.7	-2.4	6.0	1.7	-7.0	14.5		
Business Administration	88	125	143	154	167	163	192	17.8	53.6
Education	46	38	29	29	35	43	58	34.9	52.6
Humanities, Arts and Sciences	-	-	-	-	178	145	152	4.8	-
Social and Behavioral Sciences	23	24	18	26	18	25	32	28.0	33.3
No Specific College	152	119	90	113	90	78	86	10.3	-27.7

Source: Office of the Registrar

\*Includes undergraduates and graduates

## Top 5 Countries of Origin for International Students 2002-2013

Fall	Country		Country		Country		Country		Country		Total International Students
	Country	N	Country	N	Country	N	Country	N	Country	N	
<b>2002</b>	Japan	51	Russia	45	PR China	18	India	17	Taiwan	14	<b>366</b>
					South Korea	18					
<b>2003</b>	Russia	51	Japan	43	Hong Kong	28	South Korea	25	PR China	21	<b>384</b>
<b>2004</b>	Russia	50	Japan	34	India	21	Peru	16	PR China	15	<b>351</b>
									South Korea	15	
<b>2005</b>	Russia	61	Hong Kong	33	Japan	30	South Korea	26	India	23	<b>422</b>
					Saudi Arabia	30					
<b>2006</b>	Saudi Arabia	70	Russia	51	Hong Kong	37	China	28	India	23	<b>432</b>
<b>2007</b>	Saudi Arabia	72	Russia	50	China	43	India	38	Hong Kong	24	<b>472</b>
<b>2008</b>	China	82	Saudi Arabia	71	Hong Kong	45	India	37	Russia	34	<b>464</b>
<b>2009</b>	Saudi Arabia	106	China	85	India	35	Russia	26	Hong Kong	17	<b>453</b>
<b>2010</b>	Saudi Arabia	146	China	100	India	27	Russia	23	South Korea	16	<b>480</b>
<b>2011</b>	Saudi Arabia	180	China	89	Russia	24	India	21	Hong Kong	18	<b>488</b>
<b>2012</b>	Saudi Arabia	163	China	88	India	21	Russia	16	Hong Kong	15	<b>454</b>
<b>2013</b>	Saudi Arabia	183	China	127	Hong Kong	19	India	19	Japan	14	<b>520</b>

## Study Abroad Destinations: Fall 12/Spring 13/Summer 13\*

Country	N	Country	N	Country	N
Australia	5	Greece	45	Romania	29
Austria	5	Honduras	2	Russia	12
Bahamas	14	Hungary	26	Scotland	7
Bahrain	13	India	12	Singapore	1
Belgium	14	Indonesia	1	South Africa	17
Brazil	11	Ireland	60	South Korea	9
Canada	15	Italy	98	Spain	38
Chile	21	Japan	140	Taiwan	11
China	72	Morocco	1	Tanzania	11
Costa Rica	45	Netherlands	36	Thailand	20
Ecuador	1	New Zealand	2	Turkey	2
England	131	Nicaragua	27	United Arab Emirates	4
France	75	Panama	19	Wales	3
Germany	235	Peru	2		
Ghana	2	Puerto Rico	1		
				<b>Total</b>	<b>1,295</b>
				<b>Number of Countries</b>	<b>43</b>

Source: *Study Abroad Center*

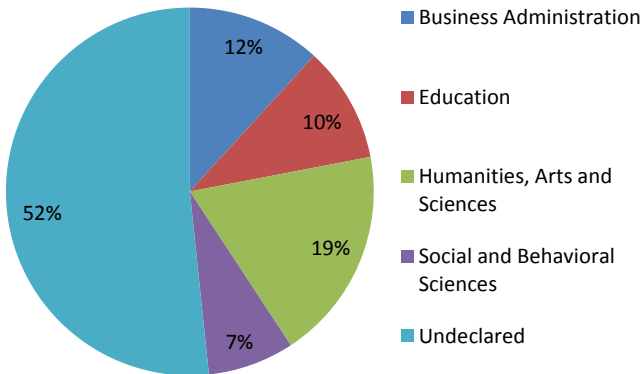
\*Includes undergraduates and graduates

## UNI Study Abroad Students by College and Classification: Fall 12/Spring 13/Summer 13\*

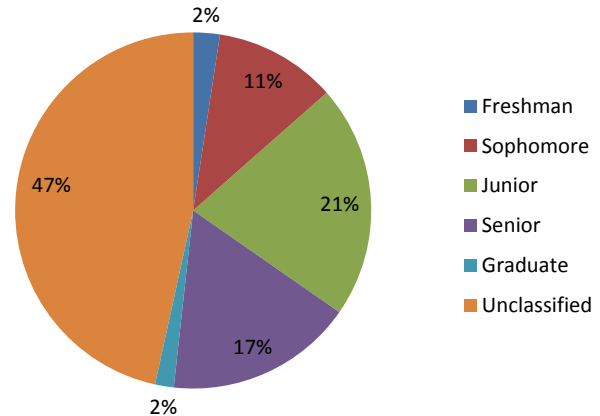
College	N
Business Administration	132
Education	114
Humanities, Arts and Sciences	210
Social and Behavioral Sciences	85
Undeclared	578
<b>Total</b>	<b>1,119</b>

Classification	N
Freshman	27
Sophomore	124
Junior	237
Senior	191
Graduate	19
Unclassified	521
<b>Total</b>	<b>1,119</b>

### Students by College



### Students by Classification



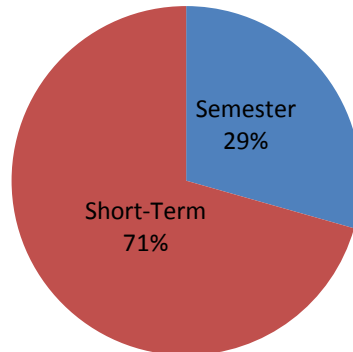
Source: Study Abroad Center

\*Includes undergraduates and graduates

## UNI Study Abroad Students by Term\*

Type of Program	Fall '12	Spring '13	Summer '13	Total
Semester	141	188		329
Short-Term		49	741	790
<b>Total</b>				<b>1,119</b>

### Students by Type of Program



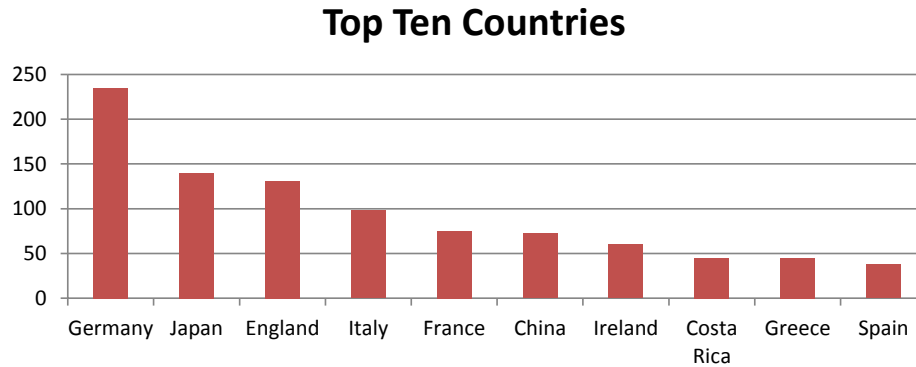
Source: Study Abroad Center

\*Includes undergraduates and graduates



## UNI Study Abroad Top Ten Countries: Fall 12/Spring 13/Summer 13

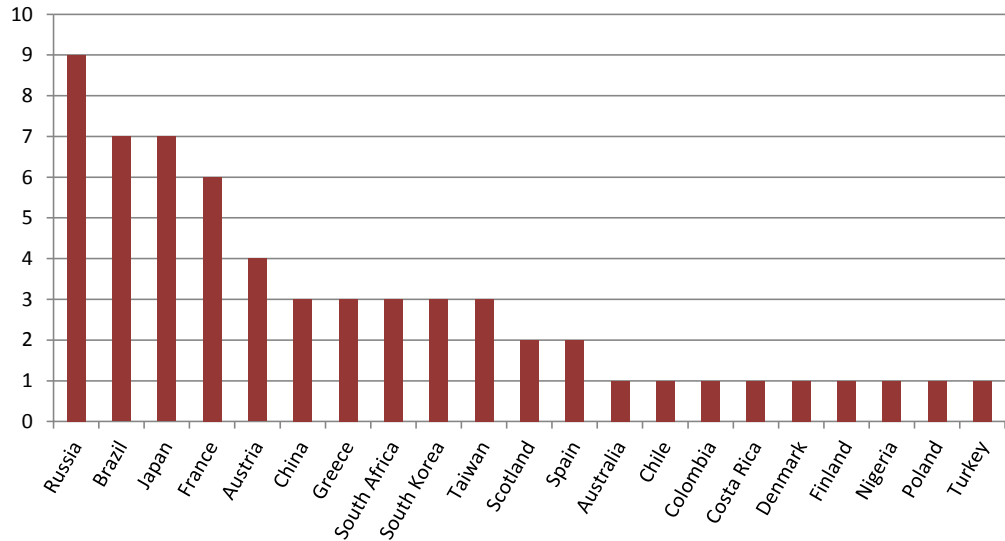
<b>Top 10 Countries</b>	<b>N</b>
Germany	235
Japan	140
England	131
Italy	98
France	75
China	72
Ireland	60
Costa Rica	45
Greece	45
Spain	38
<b>Total</b>	<b>939</b>



Source: Study Abroad Center

## Incoming International Exchange Students by Country: Fall 12/Spring 13/Summer 13

Country	N
Russia	9
Brazil	7
Japan	7
France	6
Austria	4
China	3
Greece	3
South Africa	3
South Korea	3
Taiwan	3
Scotland	2
Spain	2
Australia	1
Chile	1
Colombia	1
Costa Rica	1
Denmark	1
Finland	1
Nigeria	1
Poland	1
Turkey	1



**Total**    **61**

**Number of Countries**    **21**

Source: Study Abroad Center

\*Includes undergraduates and graduates

## UNI Students Studying Abroad by Region\*

<u>Region: Fall 2000 - Fall 2013</u>	<u>N</u>	<u>Region: Fall '12/Spring '13/Summer '13</u>	<u>N</u>
Europe	3,696	Europe	628
Asia	1168	Asia	278
Central America	759	Central America	93
South America	229	South America	35
Oceania	225	Africa	31
Africa	102	Oceania	7
Caribbean	21	Caribbean	15
North America	21	Middle East	17
Middle East	18	North America	15
<b>Total</b>	<b>6,239</b>	<b>Total</b>	<b>1,119</b>

Source: *Study Abroad Center*

\*Includes undergraduates and graduates

## Top 5 Countries for UNI Study Abroad Students FY 2001-FY 2013

FY	Country	Top 1	Country	Top 2	Country	Top 3	Country	Top 4	Country	Top 5
2000-2001	Spain	56	Russia	33	Mexico	22	Australia	19	Wales	14
2001-2002	Mexico	27	Spain	25	Russia	17	Austria	15	Poland	11
2002-2003	Spain	36	Mexico	32	Poland	26	Australia	20	Russia	16
2003-2004	France	53	Australia	33	Spain	28	Mexico	22	Russia	15
2004-2005	France	64	Spain	54	Mexico	35	Russia	25	Chile	20
2005-2006	Spain	59	China	40	Mexico	31	Australia	24	Russia	24
2006-2007	France	72	Spain	70	Mexico	36	Nicaragua	32	England	27
2007-2008	Nicaragua	52	Spain	46	England	43	France	32	Mexico	32
2008-2009	England	61	Greece	54	Nicaragua	52	Spain	52	Ireland	31
2009-2010	England	98	Italy	92	Spain	67	Ireland	62	France	54
2010-2011	Germany	302	Japan	145	Italy	119	England	112	Ireland	72
2011-2012	Germany	255	Japan	147	England	106	Italy	98	Ireland	63
2012-2013	Germany	235	Japan	140	England	131	Italy	98	France	75

Source: *Study Abroad Center*

\*Includes undergraduates and graduates

\*\*For multiple destinations in one program, total count was included for all countries

## UNI Services to Businesses, Communities and Local Government

Divisions	Location	Telephone	Web Site
Center for Energy and Environmental Education	Cedar Falls, IA	319-273-2573	<a href="http://www.uni.edu/ceee">www.uni.edu/ceee</a>
Geoinformatics Training, Research, Education and Extension	Cedar Falls, IA	319-273-3816	<a href="http://www.geotree.uni.edu">www.geotree.uni.edu</a>
Heartland Economic Development Course	Cedar Falls, IA	319-273-2969	<a href="http://www.bcs.uni.edu/heartland">www.bcs.uni.edu/heartland</a>
Institute for Decision Making	Cedar Falls, IA	319-273-6941	<a href="http://www.bcs.uni.edu/idm">www.bcs.uni.edu/idm</a>
Iowa Waste Reduction Center	Cedar Falls, IA	319-273-8905	<a href="http://www.iwrc.org">www.iwrc.org</a>
John Pappajohn Entrepreneurial Center	Cedar Falls, IA	319-273-5732	<a href="http://www.bcs.uni.edu/jpec">www.bcs.uni.edu/jpec</a>
Materials Innovation Service	Cedar Falls, IA	319-273-7499	<a href="http://www.rrttc.com">www.rrttc.com</a>
New Iowans Center	Cedar Falls, IA	319-273-3029	<a href="http://www.bcs.uni.edu/ICILI">www.bcs.uni.edu/ICILI</a>
Recycling and Reuse Technology Transfer	Cedar Falls, IA	319-273-3689	<a href="http://www.uni.edu/rtrtc">www.uni.edu/rtrtc</a>
Regional Business Center	Cedar Falls, IA	319-273-4335	<a href="http://www.uni.edu/rbc">www.uni.edu/rbc</a>
Strategic Marketing Services	Cedar Falls, IA	319-273-2886	<a href="http://www.sms.uni.edu">www.sms.uni.edu</a>
Sustainable Tourism and Environmental Program	Cedar Falls, IA	319-273-6840	<a href="http://www.uni.edu/step">www.uni.edu/step</a>
Tallgrass Prairie Center	Cedar Falls, IA	319-273-2238	<a href="http://www.tallgrassprairiecenter.org">www.tallgrassprairiecenter.org</a>
UNI Metal Casting Center	Cedar Falls, IA	319-273-6894	<a href="http://www.mcc.uni.edu">www.mcc.uni.edu</a>

Source: *Business and Community Services*

## UNI Carnegie Classification

Classification	Category
Basic	Master's L: Master's Colleges and Universities (larger programs)
Size and Setting	L4/R: Large four-year, primarily residential
Enrollment Profile	VHU: Very high undergraduate
Undergraduate Profile	FT4/S/HTI: Full-time four-year, selective, higher transfer-in
Undergraduate Instructional Program	Prof + A&S/SGC: Profession plus arts & sciences, some graduate coexistence
Graduate Instructional Program	Doc/Prof: Doctoral, professions dominant

*This institution participated in the following elective classification:*

Community Engagement	Curricular Engagement and Outreach and Partnerships
Level	4-year or above
Control	Public
Enrollment (Fall 2004)	12,927

Source: *The Carnegie Foundation for the Advancement of Teaching - classification based on data from 2003 and 2004*

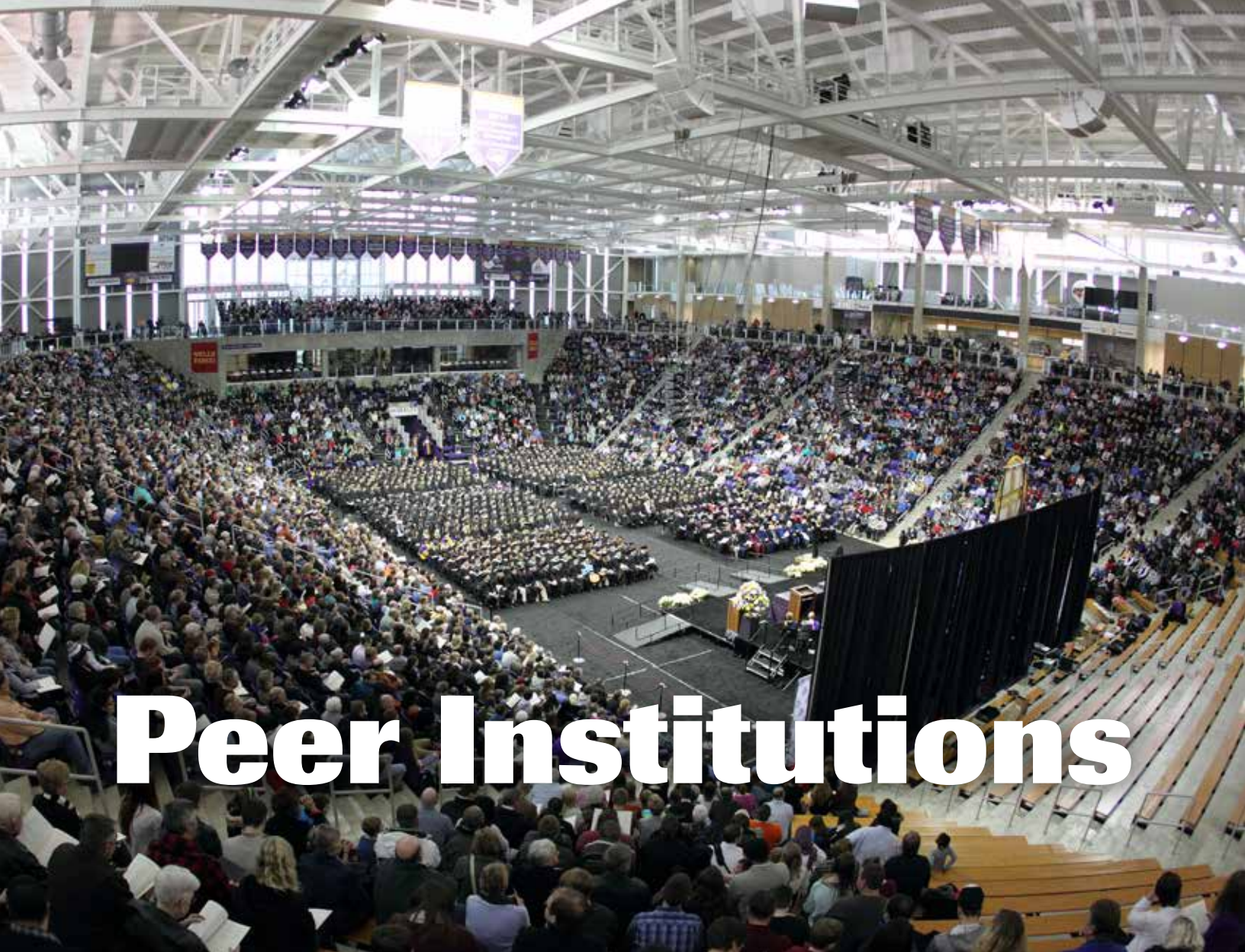
NOTES:  
 Graduate program classification is based on fewer than 50 degrees.  
 Undergraduate program classification: the percentage is within 5 points of a category border (arts & sciences direction).

Apparent inconsistencies between basic and instructional program classifications are due to degree thresholds used in the basic classification.

## Iowa Economic Impact Profile

Item	Details
Discretionary Spending and Tourism	12,159 current students  34,923 attendees at GBPAC Artist Series events (2012-2013)
Provide Higher Ed	more than 90.0% of students are from Iowa Credit courses were offered in 98 counties and 584 cities and towns  27 off-campus degree and certification programs were offered 13,818 enrollment in Continuing and Distance Education Credit courses  11,400 non-credit educational activities
Business Services and Community Impact	Total number community service hours engaged in by UNI students is 480,117 (2011-2012)  UNI provided service in all 99 counties to nearly 1,273 unique business, community and local government clients; another 12,800 individuals were engaged in the MyEntre.Net entrepreneurial support system.

Source: CIO's Office and Institutional Research



# Peer Institutions





# Peer Institutions

## Undergraduate Enrollment and Costs 2011-2012

Institution	Location	UG	Student-	In-State	Out-of-State
			to-Faculty Ratio	Tuition & Fees	Tuition & Fees
Northern Arizona University	Flagstaff, AZ	20,746	20/1	\$22,730	\$35,086
California State University	Fresno, CA	19,132	26/1	\$21,069	\$32,229
Illinois State University	Normal, IL	18,594	19/1	\$24,816	\$31,776
Indiana State University	Terre Haute, IN	9,449	18/1	\$19,838	\$29,062
University of Northern Iowa	Cedar Falls, IA	11,408	16/1	\$18,876	\$27,632
Central Michigan University	Mt. Pleasant, MI	21,698	22/1	\$20,556	\$32,624
University of Minnesota	Duluth, MN	10,680	21/1	\$22,780	\$25,290
University of North Carolina	Greensboro, NC	14,898	17/1	\$17,904	\$30,429
Ohio University	Athens, OH	21,655	20/1	\$23,343	\$32,307
University of North Texas	Denton, TX	29,897	21/1	\$18,827	\$26,339
University of Wisconsin	Eau Claire, WI	10,646	21/1	\$17,332	\$24,905

Source: IPEDS

UG-Fall 2011 undergraduate enrollment

The cost here refers to the total dollar amount of living on campus thus including room and board.

## Faculty by Rank 2011-2012

Institution	Location	Associate	Assistant
		Professor	Professor
Northern Arizona University	Flagstaff, AZ	258	178
California State University	Fresno, CA	220	134
Illinois State University	Normal, IL	248	210
Indiana State University	Terre Haute, IN	120	99
University of Northern Iowa	Cedar Falls, IA	157	123
Central Michigan University	Mt. Pleasant, MI	266	244
University of Minnesota	Duluth, MN	77	139
University of North Carolina	Greensboro, NC	195	135
Ohio University	Athens, OH	216	252
University of North Texas	Denton, TX	281	219
University of Wisconsin	Eau Claire, WI	122	129

Source: *IPEDS*

2011-2012 Academic year; full-time faculty on both 9/10 month and 11/12 month contract length

## Faculty Average Salaries by Rank 2011-2012

Institution	Location	Associate Professor		Assistant Professor		All Ranks
		Professor	Professor	Professor	Instructor	
Northern Arizona University	Flagstaff, AZ	\$96,940	\$69,318	\$58,990	\$39,010	\$69,530
California State University	Fresno, CA	\$94,783	\$71,333	\$62,097	N/A	\$73,879
Illinois State University	Normal, IL	\$90,049	\$69,068	\$67,124	N/A	\$69,297
Indiana State University	Terre Haute, IN	\$90,556	\$67,413	\$60,485	\$40,875	\$67,751
University of Northern Iowa	Cedar Falls, IA	\$87,088	\$68,943	\$58,856	\$49,856	\$67,886
Central Michigan University	Mt. Pleasant, MI	\$97,783	\$75,246	\$61,476	\$41,305	\$71,792
University of Minnesota	Duluth, MN	\$93,842	\$72,141	\$58,289	\$47,138	\$67,389
University of North Carolina	Greensboro, NC	\$109,378	\$75,849	\$62,880	\$57,329	\$73,731
Ohio University	Athens, OH	\$102,132	\$76,039	\$60,391	\$42,514	\$74,128
University of North Texas	Denton, TX	\$106,181	\$80,195	\$66,548	\$57,150	\$77,000
University of Wisconsin	Eau Claire, WI	\$72,896	\$61,454	\$56,367	\$44,899	\$59,237

Source: *IPEDS*

2011-2012 Academic year; full-time faculty

## Undergraduates Receiving Student Financial Aid: 2011-2012\*

Institution	Location	Federal Grants**		State/Local Grants		Institutional Grants		Receiving Any Financial Aid
		N	\$	N	\$	N	\$	%
Northern Arizona University	Flagstaff, AZ	1,200	4,583	138	2,168	2,038	7,031	85
California State University	Fresno, CA	1,722	4,891	1,586	2,966	1,564	5,196	79
Illinois State University	Normal, IL	856	4,331	952	5,142	1,034	3,937	79
Indiana State University	Terre Haute, IN	1,286	4,242	995	5,216	1,621	2,650	93
University of Northern Iowa	Cedar Falls, IA	530	4,006	108	3,607	1,070	2,725	85
Central Michigan University	Mt. Pleasant, MI	1,334	4,000	494	661	2,390	5,971	91
University of Minnesota	Duluth, MN	548	4,179	871	3,191	1,280	3,033	86
University of North Carolina	Greensboro, NC	1,140	4,152	1,200	3,004	1,117	2,314	77
Ohio University	Athens, OH	1,030	3,882	664	700	1,909	3,923	82
University of North Texas	Denton, TX	1,534	4,376	1,809	4,090	2,010	3,816	82
University of Wisconsin	Eau Claire, WI	507	4,301	458	1,948	786	921	81

Source: *Integrated Postsecondary Education Data System (IPEDS)*

\* Full-time, first-time, degree/certificate-seeking undergraduate students receiving financial aid.

\$: Average amount of aid received.

\*\*Federal grant aid plus other federal grant aid (new in 2007-2008)

## Retention and Graduation Rates Fall 2011

Institution	Location	Retention <sup>*</sup> %	Graduation Rates <sup>**</sup> Total
Northern Arizona University	Flagstaff, AZ	73	50
California State University	Fresno, CA	86	48
Illinois State University	Normal, IL	85	69
Indiana State University	Terre Haute, IN	58	40
University of Northern Iowa	Cedar Falls, IA	82	67
Central Michigan University	Mt. Pleasant, MI	76	57
University of Minnesota	Duluth, MN	78	52
University of North Carolina	Greensboro, NC	76	52
Ohio University	Athens, OH	80	69
University of North Texas	Denton, TX	78	47
University of Wisconsin	Eau Claire, WI	84	65

Source: *Integrated Postsecondary Education Data System (IPEDS)*

<sup>\*</sup>Full-time retention rate, 2011-12 academic year

<sup>\*\*</sup>Graduation rates within 150% of normal time Fall 2011

## Degrees Granted In Academic Year 2011-2012

Institution	Location	Baccalaureate			Total
		(Bachelor's)	Master's	Doctorates	
Northern Arizona University	Flagstaff, AZ	3,782	1,707	95	5,584
California State University	Fresno, CA	3,552	811	36	4,399
Illinois State University	Normal, IL	4,287	830	43	5,160
Indiana State University	Terre Haute, IN	1,317	531	67	1,915
University of Northern Iowa	Cedar Falls, IA	2,198	514	13	2,725
Central Michigan University	Mt. Pleasant, MI	3,717	1,915	92	5,724
University of Minnesota	Duluth, MN	1,943	225	13	2,181
University of North Carolina	Greensboro, NC	2,762	945	130	3,837
Ohio University	Athens, OH	4,630	1,023	267	5,920
University of North Texas	Denton, TX	6,362	1,806	227	8,395
University of Wisconsin	Eau Claire, WI	2,021	171	0	2,192

Source: *Integrated Postsecondary Education Data System (IPEDS)*

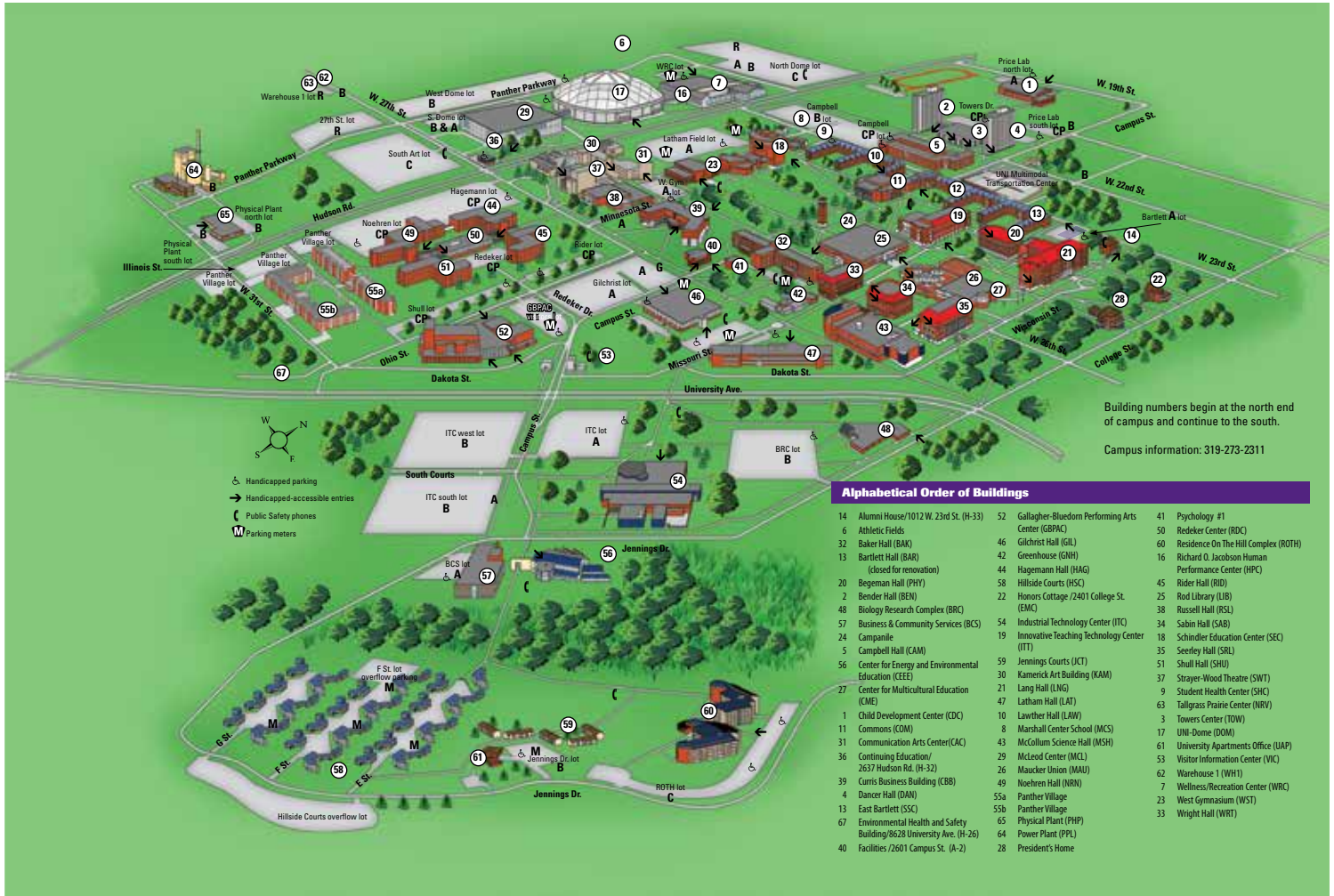
No person shall be excluded from participation in, be denied the benefits of, or be subjected to discrimination in employment, any educational program, or any activity of the University, on the basis of age, color, creed, disability, gender identity, national origin, race, religion, sex, sexual orientation, veteran status, or on any other basis protected by federal and/or state law.

The University of Northern Iowa prohibits discrimination and promotes affirmative action in its educational and employment policies and practices as required by Title IX of the Educational Amendments of 1972, the Americans with Disabilities Act of 1990, Section 504 of the Rehabilitation Act of 1973, Title VII of the Civil Rights Act of 1964 and other applicable laws and University policies. The University of Northern Iowa prohibits sexual harassment, including sexual violence.

The following person has been designated to handle inquiries regarding the non-discrimination policies and serves as the University Title IX Officer: Leah Gutknecht, Assistant to the President for Compliance and Equity Management, Office of Compliance and Equity Management, 117 Gilchrist Hall, UNI, Cedar Falls, IA 50614-0028, 319-273-2846, leah.gutknecht@uni.edu

In compliance with the Jeanne Clery Act, UNI publishes an Annual Security & Fire Report. The report contains information regarding campus safety and security including crime prevention, crime reporting policies, drug and alcohol abuse, sexual assault and student disciplinary procedures. The report also contains the three previous years' crime and fire statistics for on campus locations and certain off campus locations owned or controlled by UNI. To obtain a copy of the report, contact the UNI Department of Public Safety located at 030 Gilchrist Hall, Cedar Falls, IA 50614, call 319-273-2712 or visit [www.vpaf.uni.edu/pubsaf/crime\\_stats/clery.shtml](http://www.vpaf.uni.edu/pubsaf/crime_stats/clery.shtml).





Building numbers begin at the north end of campus and continue to the south.

Campus information: 319-273-2311

- Handicapped parking
- Handicapped-accessible entries
- Public Safety phones
- Parking meters

### Alphabetical Order of Buildings

14 Alumni House/1012 W. 23rd St. (H-33)	52 Gallagher-Bluedorn Performing Arts Center (GBPAC)	41 Psychology #1
6 Athletic Fields	46 Gilchrist Hall (GIL)	50 Redeker Center (RDC)
32 Baker Hall (BAK)	42 Greenhouse (GNH)	60 Residence On The Hill Complex (ROTH)
13 Bartlett Hall (BAR)	44 Hagemann Hall (HAG)	16 Richard O. Jacobson Human Performance Center (HPC)
(closed for renovation)	58 Hillside Courts (HSC)	45 Rider Hall (RID)
20 Bogeman Hall (PHY)	22 Honors Cottage /2401 College St. (BMC)	25 Rod Library (LIB)
2 Bender Hall (BEN)	54 Industrial Technology Center (ITC)	38 Russell Hall (RSL)
48 Biology Research Complex (BRC)	19 Innovative Teaching Technology Center (ITT)	34 Sablin Hall (SAB)
57 Business & Community Services (BCS)	59 Jennings Courts (JCT)	18 Schindler Education Center (SEC)
24 Campanile	30 Kamerick Art Building (KAM)	35 Seefley Hall (SRL)
5 Campbell Hall (CAM)	21 Lang Hall (LNG)	51 Shall Hall (SHU)
56 Center for Energy and Environmental Education (CEE)	47 Latham Hall (LAT)	37 Strayer-Wood Theatre (SWT)
27 Center for Multicultural Education (CME)	10 Lawther Hall (LAW)	9 Student Health Center (SHC)
1 Child Development Center (CDC)	8 Marshall Center School (MCS)	63 Tallgrass Prairie Center (NRC)
11 Commons (COM)	43 McCollum Science Hall (MSH)	3 Towers Center (TOW)
31 Communication Arts Center (CAC)	29 McLeod Center (MCL)	17 UNI-Dome (DOM)
36 Continuing Education/2637 Hudson Rd. (H-32)	26 Maucker Union (MAU)	61 University Apartments Office (UAP)
5 Campbell Hall (CAM)	49 Noehren Hall (NRN)	53 Visitor Information Center (VIC)
39 Curris Business Building (CBB)	55a Panther Village	62 Warehouse 1 (WH1)
4 Dancer Hall (DAN)	55b Panther Village	7 Wellness/Recreation Center (WRC)
13 East Bartlett (SSC)	65 Physical Plant (PPP)	23 West Gymnasium (WST)
67 Environmental Health and Safety Building/8628 University Ave. (H-26)	64 Power Plant (PPL)	33 Wright Hall (WRT)
40 Facilities /2601 Campus St. (A-2)	28 President's Home	



# University of Northern Iowa

CIO's Office and Office of  
Institutional Research  
University of Northern Iowa  
Cedar Falls, Iowa 50614-0005

319-273-3050